




Bristol Post-16 Directory

Courses starting
September 2026





Online
information
for young people
14 to 25 with special
educational needs
and disability (SEND)

Bristol's SEND Local Offer

www.bristol.gov.uk/localoffer

Find out about:

- education and training options
 - accessible activities
 - local youth groups
 - where to live
 - getting a job
- and more...



bristollocaloffer@bristol.gov.uk

Welcome to the Bristol Post-16 Directory

Congratulations on finishing year 11!

As you look ahead, you may be thinking about your next steps, whether that's further education, employment, or training. This can be an exciting time, but also a moment to pause, reflect, and seek the right advice to help you make informed choices about your future.

The good news is there's a wide range of people and organisations ready to support you. From trusted adults to expert local services, help is available to guide you through your options. We've created the Post-16 Directory as a practical guide filled with the information you need about different schools, colleges, training providers, and support services in Bristol.

Your next steps have the power to shape your future, and while the choices ahead may feel big, this directory is here to guide you, with advice, contacts and opportunities to help you move forward with confidence.

On behalf of Bristol City Council, we wish you every success as you take this next step in your journey.

Vik Verma

**Director of Education,
Inclusion and Skills.**



Contents

Welcome to the Bristol Post-16 Directory	3
Staying in Education and Training after Year 11.....	6
Qualifications Guide - Post-16 options.....	8
For Parents and Teachers: Top Tips for supporting young people over the next few years	10
General Further Education Colleges and Sixth Form Colleges.....	12
City of Bristol College	12
St Brendan's Sixth Form College	14
School Sixth Forms	15
Ashton Park School.....	15
Bristol Cathedral Choir School	16
Bristol Free School Sixth Form	17
Cabot Learning Federation Post-16.....	18
V6 Sixth Form (Montpelier High School)	20
North Bristol Post-16 Centre (Cotham/Redland Green).....	22
St Bede's Catholic College	23
St Mary Redcliffe & Temple Sixth Form Centre.....	24
Trinity Academy	25
Other colleges and specialist schools in the local area.....	26
Bath College.....	26
Blaise High School SEN Post-16.....	28
Digitech Studio School	29
Learn@ Knowle DGE Academy	30
Olympus Post-16	31
South Gloucestershire and Stroud College.....	32
Weston College.....	36
Training Providers	38
Access Creative College.....	38
A2A (Hartcliffe and Withywood Ventures).....	39
Babbasa	40
BEMA - British Engineering Manufacturers Association	42
Boomsatsuma	43
Bristol Bears Set Play Programme.....	44

Bristol City Robins Foundation	45
Bristol Rovers Community College	47
Bristol School of Acting	48
Circomedia.....	49
Claremont School	50
Creative Youth Network	51
Discovery Education Centres Ltd	52
Greenhouse Learning.....	53
Greenlight Safety and Training	54
The Kings's Trust	55
Kingsweston School.....	56
Lifetime Training.....	57
MPCT – Military Academies	58
Next Level Training (The Business Development Group of Reflections Training Academy).....	59
On Site Bristol	61
The Park Centre	62
Professional Apprenticeships.....	63
Reflections Training Academy	64
SWATPRO	65
North Bristol NHS Trust	65
The Focus Training Group	65
Square Food Foundation.....	66
United Hospital Bristol and Weston Trust.....	67
Youth Education Service	68
Course Availability for 2026	69
A-Levels	69
GCSEs.....	79
T-Levels	83
Apprenticeship.....	85
Pre-Apprenticeship and Internship	94
Specialist and Vocational	95
Other Courses	114
SEND	116

Staying in Education and Training after Year 11

Do I have to stay on at school?

All young people are required to stay in education or training until the end of the academic year of their 18th birthday. This is so that every young person gains the right knowledge and skills to move on to a successful career.

What are my options?

You can choose from full-time education at school or college, an Apprenticeship, a Traineeship, full-time work or volunteering (which is defined as 20 hours or more a week) combined with part-time education or training.

Getting support

If you are still at school, you should meet with your careers advisor who will provide you with independent advice and guidance about all the post-16 options in your area. You should also speak to your tutors and other staff in school who know you well. They will advise you about the options that match with your interests and abilities.

You can also contact:

- A qualified careers advisor at the National Careers Service on **0800 100 900** or webchat on-line for impartial advice and support tailored to your needs at nationalcareersservice.direct.gov.uk

Or look on:

- 'Careerpilot' is a great source of local information and advice at: careerpilot.org.uk

If you have special educational needs or receive additional support at school then you should also speak to your school's special educational needs co-ordinator, who will advise you about your next steps. Before you make a decision about your next step here are some questions to ask yourself:

- What am I good at?
- How well do I expect to do in Year 11?
- What are my interests?
- What skills do I have?
- What do I like doing?

When considering a particular qualification or programme to follow next year, ask yourself:

What is it?

- What is the qualification (e.g. A Level, GCSE, BTEC)?
- Is it at the right level for me?

What is the subject?

- Will it help me do the things I want to do in the future?
- What is the progression from this qualification (e.g. is there something similar available at the next level)?
- Is it something that I enjoy and I'm good at?
- Am I prepared to put in the hard work to get a good Grade?
- What will the subject actually cover?

How will I learn?

- Will there be lots of practical sessions, hands-on work, essays?
- Will my learning be assessed through exams, portfolio or on the job?

Where will I learn?

- In a classroom, in a lab, in the workplace?
- At a school sixth form, at a sixth form college, at a further education college, with a work-based training provider?

Why should I study for this qualification?

- Does it fit with my other choices and complement them?
- Will this course help me to develop skills for the future?

Am I eligible?

- Do I need particular qualifications to be allowed to study at a particular institution?
- Am I likely to achieve the right Grades to get on to the course?

Apprenticeships and Pre-Apprenticeships

With an apprenticeship you can enter employment and start building a career from the age of 16. As an apprentice you will work for an employer, earning a wage and developing job specific skills. Most of the training is delivered in the workplace and you will also be supported by a specialist learning provider to study towards a nationally recognised qualification. This could be with a training provider or a college. Find out more at www.gov.uk/apply-apprenticeship or visit www.amazingapprenticeships.com

for impartial and independent advice on this and much more, including our live apprenticeship vacancies map.

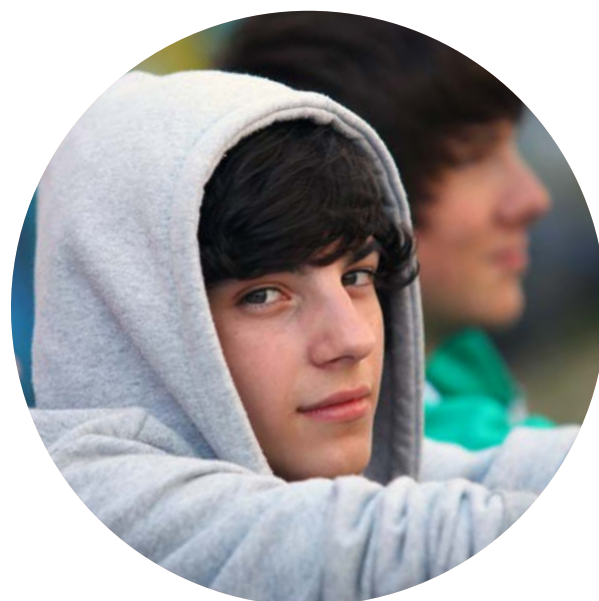
A Traineeship is an education and training program with work experience. It provides the essential work preparation training English, Maths and a work experience placement needed to move on to secure an apprenticeship or employment.

Education and Training

The pathway you choose will be based on the following:

- What GCSE Grades you achieve
- How you like to learn
- What you want to do in the future (remember you are likely to change jobs many times in your working life).

Remember that if you do not get a Grade 4 in Maths and/or English GCSE in the summer you will need to continue studying until you get the equivalent of a Grade 4 in these subjects. This option will be available to you at your school, college or training provider so please ask them for information.



Qualifications Guide - Post-16 options

A Levels

Qualification level: 3 - Assessment methods: exams

What is it? A Levels are two year courses with little coursework or practical assessments followed by an exam. It's for you if... A Levels are a popular way to get the qualifications required for university, although you can just take them on their own without progressing to university.

It's for you if... You get on well with both classroom learning and independent study, and if you enjoy a more academic style of learning.

Apprenticeships

Qualification level: 2-5 - Assessment methods: at the end of your training

What is it? It's helpful to think of an apprenticeship as a job, rather than a study programme. You get hired by an employer for a particular role – like hairdresser, veterinary nurse or accountant – and you study while you get paid to do the job. The various levels of apprenticeship is the equivalent to GCSE's (Level 2), A levels (Level 3) and foundation degree (Level 4).

It's for you if... You know what you want to do for a living, you want to work, and you want to get nationally recognised qualifications while you're at it. Apprentices learn by doing the job, so if you prefer a hands-on approach, it could be ideal for you.

Vocational BTEC qualifications

Qualification level: 1-5 - Assessment methods: written or activity-based assignments

What is it? BTECs are work-focused qualifications that look at the areas of knowledge and skills you might need for a particular sector or industry. You can take them on their own, or alongside other qualifications like apprenticeships and A Levels. You can also choose BTEC Higher National Certificates or Diplomas - sometimes called HNCs or HNDs - which are the equivalent of the first and second years of a degree respectively. These can then be topped up to a full degree with additional study.

It's for you if... You know what sector you would like to work in and you learn better in a hands-on, vocational environment. Or perhaps you'd like a course that gives you some of the academic theory while also preparing you for the workplace. BTECs are increasingly popular for getting into uni. One in four students takes the BTEC route.

Degree Apprenticeships

Qualification level: 4+ - Assessment methods: on-the-job and written/exam

What is it? These programmes are developed by employers and universities. Degree apprenticeships can be taken once you have completed a Level 3 qualification. You need to show your prior learning achievements and also an ability to study at a higher level.

It's for you if... You want a degree without the cost, or simply want to get on with your career but still want degree-level training.

National Vocational Qualifications (NVQs)

Qualification level: 1-7 - Assessment methods: in the workplace

What is it? NVQs are usually taken alongside work. They're designed to show that you're competent in the various skills needed to do a particular job and are assessed on the practical work you do.

It's for you if... You want a qualification that ties in with a job, that enhances your career prospects and that you can follow as you gain more skills – once you complete one level, you can progress to the next one.

T Levels

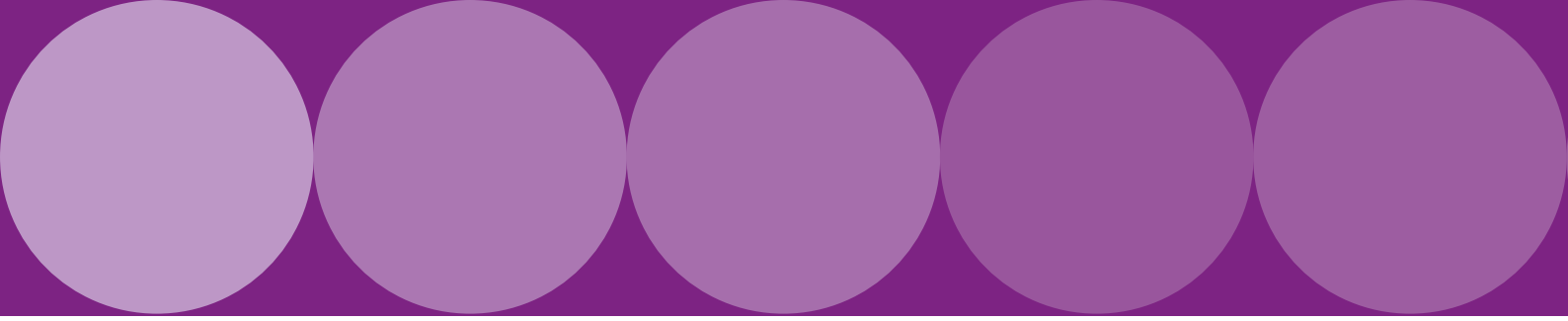
T Levels are courses that first started in September 2020. T Levels follow GCSEs and are equivalent to 3 A Levels. These two-year courses offer a mix of classroom learning and a 45 day industry placement.

Traditional Degrees

Qualification level: 4+ - Assessment methods: exam/coursework / performance

What is it? Traditional degrees last three or four years (full time). They are more theory-based and academically challenging – students learn to think critically, structure arguments and gain an in-depth understanding of their subject.

It's for you if... You get on well with academic learning and want to totally immerse yourself in a subject. The university experience is unique, offering students the chance to develop and grow both personally and professionally before entering the world of work.



For Parents and Teachers: **Top Tips for supporting young people over the next few years**

For many young people, the world past the end of Year 11 can feel overwhelming. It can be difficult for parents and teachers to know how to help their children/students make informed choices about their future careers in a rapidly changing world of work. There are hundreds of exciting opportunities and it is never too early to start investigating and exploring the options ahead.

- All secondary schools are required to provide a programme of careers education and guidance; this should be published on their websites. The Careers Programme should include: access to a careers advisor, exposure to the world of work, exposure to further study options, opportunities to meet employers and support and help with applying to the range of Post-16 pathways available (i.e. apprenticeships, Further Education, Sixth Form Schools or Colleges or University options).
- The schools/academies will be able to direct you to a range of local and national information sources.
- As a teacher or parent it can be useful to share your own experiences however, be aware that over time processes and entry requirements have changed and what you had been advised may now be out of date.
- Many young people have an idea of what they want to do but are unsure about how they can achieve their goals. If they have particular interests in a career then explore the range of options with them. There could be a variety of ways to start within the chosen area and the entry requirements may be different depending on the route they take. If, after investigating options, their chosen direction is not realistic in light of predicted grades: are there alternative routes which might not require the same level of qualification?
- Find out what the demands are for these careers. Often popular industry areas have far more applicants than vacancies. Investigate similar skilled roles in differing industry areas; in the early stages, many roles have transferable skills. Explore the options of underrepresented areas such as women in construction, or men in health and social care roles – do not limit the options based on out of date gender limitations. Similarly, it could be beneficial to research local and national labour market information. This will inform you of current skills and shortages and demand in sectors local to where your young person is looking for employment.

- Help the young person to understand what may be involved as part of the job / industry. For example: hours, working situations, role expectations, previous experience needed and how the application process may look. Help them to explore options of work experience, volunteering or speaking with employers within the chosen career area.
- While university is one option, there are now many options to reach higher level qualifications. A degree may be required for some career paths but a higher level apprenticeship could also be a valid route which is worth exploring. Over the past few years, apprenticeships have grown in their availability of academic levels, age ranges, subject areas and learning delivery options. Apprenticeships are a highly valid pathway to follow employment based routes all the way through to degree and postgraduate level as a genuine alternative to university.
- Encourage your young person to log their achievements and times when they have evidenced a skill that may be relevant for the workplace (i.e. teamwork, patience, resilience, independence, time keeping). This will help support them when writing applications and attending job interviews in the future. Skills and experiences can be transferable and drawn upon from the workplace, study environment, at home as well as in the hobbies your young person is involved in.
- Continue to talk with your young person about the world of work; it is a moving world that will change for them as they discover more and match their skills, interests, experience and aspirations. Their careers do not have to be fully planned by the end of year 11, however they do need the skills to be resilient when things go differently than they had planned.
- Your young person's learning establishment will be able to help with all the above points and signpost to useful information.
- For further support please contact: Post16participation@bristol.gov.uk or through the www.bristolesl.com/bristolpost16 website.



General Further Education Colleges and Sixth Form Colleges

City of Bristol College

Director of Further and Higher Education:
Pasquale Fasulo

Director Foundation and Skills:
Cathy Bowstead

Additional Learning Support Manager:
Annette Spear

Director Student Experience, quality and Safeguarding: **Amy Woodrow**

School Liaison Officer: **Sophie Harding**
School Liaison Email:
schoolsliaison@cityofbristol.ac.uk

Post-16 Enquiries & Applications should be sent to: enquiries@cityofbristol.ac.uk

Website: www.cityofbristol.ac.uk

Phone: 0117 312 5000

Our comprehensive curriculum offer means that our students are able to develop the skills, knowledge and qualifications they need to progress into employment, start their career, go to university or improve their independence.

We have Centres located across the city with excellent transport links, to provide excellent facilities and inspiring learning environments to all young people in Bristol.

We offer a wide range of technical and vocational qualifications for young people who want to develop practical skills to progress into employment or on to vocationally related University degree or higher education courses. For those who want to gain their qualifications and learn on the job, we have the largest apprenticeship offer in Bristol with strong links with many of the city's major employers.

For students who suit academic studies, we offer A Levels that are studied over two years and enable students to progress to

higher education, a higher apprenticeship or employment. Our University Centre works in partnership with leading universities to offer Higher Nationals, foundation degrees and Level 6 honours Degrees.

In 2025/26 we will be offering T level provision at Level 3, in Health, Education and Childcare, Digital, Construction, Engineering & Manufacturing, Business Administration and Media Production.

Access to Higher Education courses provide students who don't yet meet university entry requirements to progress onto a degree programme. We offer Access to HE courses in business, engineering, environmental science, health, social science, social work, humanities, science, and medicine.

If students require additional support with developing personal skills while studying their qualification, we offer transition programmes from Entry L3 to Level 1. These programmes are suitable for anyone transitioning from alternative learning provision or home/hospital education to mainstream education and are designed to enable young people to discover their strengths and vocational skills alongside gaining their qualification.

For those who are not ready to undertake full time education or at risk of being NEET, we offer several pathways in our engagement programmes to support young people to engage with education and support progress into sustained education and training. These courses range from 8 to 12 weeks and can enable young people to then feed into vocational areas in year and undertake relevant English and Maths courses.

City of Bristol College is also a central provider of foundation study programmes in the South West, and we offer support

for students with learning difficulties and disabilities to help them to live fulfilling and independent lives. Almost half of our high need's students are studying in mainstream programmes, and many are undertaking work experience or preparing for further academic study. We have high aspirations for these students and enable them to be at the centre of their own learning decisions.

In order to support our students with additional needs, City of Bristol College has residential facilities. The Brislington Centre and The Independent Living Centre Ashley Down. The Independent Living Centre Ashley Down and The Brislington Centre is a residential, independent living training facility in Bristol that supports students with additional needs who are currently enrolled on full-time courses with City of Bristol College.

We offer English for Speakers of Other Languages (ESOL) courses from Pre-Entry to Level 1 to enable students to improve their English to a standard that will let them progress further in education. Students learn English, maths and IT, and higher-level groups also include study in vocational areas. We offer an ESOL GCSE course which supports ESOL students to progress onto Access and Higher Education.

We provide free bus passes and other financial support including Free school meals and financial support for uniforms and equipment to eligible students, to support them in accessing education and broadening their prospects. Our College Student Council, alongside our Student Experience department is responsible for organising a variety of activities, including sports and societies, to enrich the students' experience during their time with us.

General entry requirements:

Entry requirements can be found on our individual course webpages and will be discussed at interview to understand the suitability of the course for the applicant.

Please refer to course entry requirements available at www.cityofbristol.ac.uk

Open events:

Please check the website for dates for open day event: www.cityofbristol.ac.uk/events



St Brendan's Sixth Form College

Senior Leader Post-16: **Marian Curran**

SEN Lead: **Lynne Thomas**

Children in Care Lead: **Sensimilia McLean**

Enquiries/Applications for Post-16 should be sent to: applicationadmin@stbrn.ac.uk

Email: info@stbrn.ac.uk

Website: www.stbrn.ac.uk

Phone: 0117 977 7766

St Brendan's Sixth Form College is the only specialist Level 3 provider in the Bristol-Bath-South Gloucestershire area and is an educational home to over 2000 students. The College provides a diverse range of over 60 different A-level and Level 3 Applied General courses to 16–18-year-olds, as well as bespoke programmes which focus on employability, critical thinking and other enhancement opportunities.

In addition, the college has an Access to Level 3 programme for students who have the ambition to study at Level 3 but have not yet met the entry criteria to do so. Learners on this one-year pathway will study a bespoke timetable, equivalent to five GCSEs. The programme also provides opportunities for work experience.

As an educational institution exclusively for 16 – 18-year-olds, teachers are experts in their field and the campus is designed specifically for young adults to enjoy. Inspired by university-style learning, post-16 students can find all they need and more on the one Brislington campus. From state-of-the-art science labs and inspirational art spaces, to county-standard sports facilities and vibrant social spaces; St Brendan's aims to ensure all students enjoy an enriched post-16 education and are ready to take the next step towards a successful future!

At St Brendan's Sixth Form College we are committed to supporting all students with additional needs. We try to promote equality and diversity in the college, to value everyone's unique contribution, and to make sure that all of our academic and social provision is inclusive. There is no stigma attached to the Learning Development area - it is open to, and accessed by, all students, so it is never obvious who has a label of 'SEND' and who doesn't.

Getting to the college has never been easier, from September 2024 First Bus will be extending their network of services to St Brendan's giving students increased access to the college from the Greater Bristol area.

General entry requirements:

Level 3: Five GCSE grade 4s including English Language (English Literature is accepted for some courses) and a grade 3 in Maths

Access to Level 3: Four GCSE grade 3s including English Language and Maths

Open events:

Please check our website for details:

Saturday 4 October 2025 (10am–2.30pm)

Wednesday 15 October 2025 (5–8pm)

Thursday 13 November 2025 (5–8pm)

Tuesday 3 February 2026 (5–7pm)

School Sixth Forms

Ashton Park School

Senior Leader Post-16: **Michael Mantegna**

SEN Lead: **Radha Sharma**

Children in Care Lead: **Michael Mantegna**

Enquiries/Applications for Post-16
should be sent to:

applicationenquires@ashtonsixth.co.uk

Website: www.AshtonSixth.co.uk

Phone: 0117 377 2742

Ashton Park Sixth Form is situated in a picturesque setting on the edge of Ashton Court Estate. Our Sixth Form applies the same co-operative principles and values that form the cornerstone of an Ashton Park education, through from Year 7. Our provision is fully inclusive and aspirational, giving opportunities for all abilities and for both those who know their future pathway and those who are unsure. We hold a range of events, through-out the two years, to help students confirm or decide the right route for them.

Ashton Park Sixth Form is committed to providing individualised support for all students whatever their study programme and whatever their aspiration. Excellent UCAS support systems ensure our students make successful applications to their chosen universities. Equally, we have programmes that develop employability skills, helping our students gain access to employment and higher level apprenticeships.

We value student voice and our students play a significant role in the day-to-day life of Ashton Park Sixth Form. This may be, for example, organising charity or social events, playing sport fixtures or volunteering, either within school or in the local community.

General entry requirements:

Every application will be considered on an individual basis. However the key entry requirements are as follows:

Our level 3 study programme of A levels and/or level 3 vocational courses require students to achieve a minimum of 5 GCSEs (or equivalent) at Grade 4 or higher, including both English and Maths at Grade 4 or higher. For a number of subjects, there are additional requirements of level 5, 6 or higher. Details are available in the Sixth Form prospectus. As we run English and Maths GCSE resit courses, we will, in exceptional circumstances, consider students who have achieved a level 3 in English or Maths.

The Extended Project Qualification (EPQ) will be available to all students on Level 3 study programmes in the summer of Year 12.

Our Level 2 'Gateway' (to level 3) programme will provide students with the opportunity to achieve a Level 2 Certificate in vocational studies in ICT, Business and employability skills. Students will need a minimum of 5 GCSEs at Grade 2. Students will have the opportunity to re-sit GCSE English and Maths.

In these most exceptional of times, students not achieving individual course entry requirements in the summer will be considered on an individual basis and advised and guided appropriately by the Sixth Form team.

Open events:

Thursday 16 October 2025

Other appointments or tours may be arranged in advance through the above contacts.

Bristol Cathedral Choir School

Senior Leader Post-16: **Stephen Fuller**

Children in Care Lead: **Mr Pat Callaghan**

Enquiries/Applications for Post-16: The online application form will open mid-October 2025 on the school website. Check school website for closing date for applications.

Email:

post16admissions@bristolcathedral.org.uk

Website: BCCS.bristol.sch.uk

Phone: 0117 353 5000

The community at BCCS Sixth Form is warm, friendly and inclusive. Our first priority is to ensure that all students valued and supported. Students here quickly learn that they can contribute and help build on our strengths: you can become leaders within the sixth form.

We offer more than 20 A-levels, our curriculum is growing fast, with Economics, and Sociology added. Students typically take three A levels, with many choosing to do the Extended Project Qualification alongside their studies. However, Sixth Form is not just about your A levels, but about developing you as young adults, equipped with personal qualities, skills and attributes that will see you succeed at whatever you turn your energies to. We encourage and expect all students, whilst here, to engage in volunteering, work experience and to develop personal interests, whether it is music or sport, baking or programming, knitting or politics. We will support you in organising all of this, flagging up opportunities to you and let you commit to activities that suit you. As a sixth form student at BCCS you will of course be supported by our dedicated teachers, but also by our fantastic sixth form team.

Throughout your A-levels, your tutor and the Sixth Form Leadership are available to help you overcome any challenge.

Throughout your A-levels, your tutor and the Sixth Form Leadership are available to help you overcome any challenge.

Our students achieve highly by working as a team: through academic tutorials, regular tracking and intervention or the support of your peers, there is always help close by should you want it. The 6th form team work closely alongside the BCCS SENDCo, with students and families to ensure that students with special educational needs receive the support they are entitled to.

Starting with information gathering on results day, students with special educational needs will create a plan with the team that will enable teachers and pastoral staff to work with them to realise their full potential. The 6th form team are available on request to meet with parents to review progress.

General entry requirements:

To be eligible to enter the sixth form, both internal and external students will be expected to have met the minimum academic entry requirements. We will be looking for GCSE grades 6, 6, 5, 5, 5 and a 4 in English Language or Literature.

All applications are considered against the published admission arrangements 2024/25; a full copy can be viewed on the school website.

Open evenings:

Check the school website for details.

Bristol Free School Sixth Form

Senior Leader Post-16: **Steph Norto**

SEN Lead: **Ms Sally Jenkins**

Enquiries/Applications for Post-16 should be sent to: sixthform@bristolfreeschool.org.uk

Website: www.bristolfreeschool.org.uk

Phone: 0117 959 7200

Bristol Free School Sixth Form is a centre of excellence for Post-16 education which opened in September 2016. It provides an outstanding curriculum in brand new facilities shaped and developed by our students; which include exclusive social, study, sports and leisure spaces.

Our Sixth Form provides a fantastic range of opportunities within the curriculum and through our unrivalled extra-curricular programme. We offer a wide range of A Levels alongside selected BTEC Level 3 courses, in order to provide a flexible curriculum which enables our students to achieve their ambitions and move on to University, Apprenticeships or Employment.

Our pastoral and academic support is exceptionally strong and is driven by a dedicated and experienced Sixth Form team ensuring that each individual receives the right support to enable them to excel. BFS Sixth Form offers a rich extra-curricular programme throughout the year. It has been designed to give every student the opportunity to ensure that they can benefit from a range of enrichment activities, but also demonstrate their individual skills, interests and personal qualities to prospective employers or universities.

General entry requirements:

5 GCSE grades at Grade 4 or higher as well as Grade 4 or higher in English and Maths

Open evening:

Please see our website for details.



Cabot Learning Federation Post-16

Senior Leader Post-16: **Kath Cooper (Principal)**

SEN Lead: **Lana Crosbie**

Children in Care Lead: **Lana Crosbie**

Enquiries/Applications for Post-16 should be completed via website links

www.clfpost16.org or Applica '26 link live in October. info@clfpost16.org

Website: www.post16.clf.uk

Phone: 0117 988 2525

The Cabot Learning Federation Post-16 is an independent provision hosted by John Cabot Academy. We offer high quality facilities including a new dedicated Post-16 building and access to the latest subject technologies (e.g. a state-of-the-art Design Centre and sports complex). We offer an inclusive and broad programme offer for students, across a full range of A level and Vocational qualifications at Level 3,2,1

We have a strong commitment to our anti racism thread that will run through our curriculum offer, practices and policies. The Cabot Learning Federation Post-16 has committed to an ongoing process of individual and collective education, discussion, and action to engender belonging and identity for all the communities we serve.

Our committed professional team of subject experts are leading practitioners and experienced in delivering first class teaching, guidance, and support. Our wider curriculum is valued and prepares young people for aspiring futures and careers.

We provide exemplary pastoral support through a dedicated team of staff that strive to remove the barriers for students and their learning, alongside a commitment to inclusivity through our specialist Inclusion team.

Our greatest strength is the unwavering ambition we hold for all students across all prior attainment stages, setting the highest of expectations whilst maintaining strong standards. This is reflected each year in our students' progress, with students achieving on average half a grade higher than their target grades and reaching their potential and beyond.

General entry requirements:

Level 3 - A Level route requires a minimum of 6 GCSE at grades 5,5,5,5,5,5 with a level 4 in both Maths and English. Refer to the individual subject pages on our website for any subject specific entry requirements to each course.

Level 3 - Vocational route requires a minimum of 6 GCSE at grades 5,5,4,4,4,4 with a minimum level 4 in both Maths and English.

Level 3 – Specialist Vocational (Double or Triple Award) route requires a minimum of 5 x GCSE grade 4 plus either English or Maths at grade 4. (See Course Level Routes Explained on our website for further details on Specialist routes)

Level 2 – Specialist Transition route requires a minimum of 3 x GCSE grade 2 or above. {However, students not achieving this will be considered on meeting with admissions team}

Level 1 – Vocational & Work – no formal qualifications. Meeting with admissions team to access suitability for course.

Level 1/2 – ESOL (English for Speakers of Other Languages) – no formal qualifications. Meeting with admissions team to access suitability for course.

*Please refer to the individual subject pages on our website for any subject specific entry requirements to each course.

Open events:

CLF P16 Open Evening
Tuesday 30th September 2025 (4.30-7.30pm)

CLF P16 Information Evening
Tuesday 27th January 2026 (4.30-6.30pm)

Please check the website for further details.



V6 Sixth Form (Montpelier High School)

Senior Leader Post-16: **Caroline McClean**

SEN Lead: **Jaz Kaur**

Children in Care Lead: **Nicola Langham**

Enquiries/Applications for Post-16 should be sent to: v6-info@v6.e-act.org.uk

Email: v6-info@v6.e-act.org.uk

Website: www.v6bristol.org

Phone: 0117 910 8437

V6 Sixth Form is an exciting co-educational Sixth Form in central Bristol. V6 is Montpelier High School's post-16 provision in a purpose-built post-16 Centre on Cheltenham Road. We provide an inspirational environment enabling students to flourish and achieve their personal ambitions. Students attending will benefit from our status as an 'Aspiring State School' for University of Bristol, which results in the provision of lower contextual offers from the university for our students as well as access to programmes of support for students aspiring to apply to university. Academic success is important but being part of V6 Sixth Form is about much more than achieving outstanding exam results.

At V6 we ensure our students:

- Feel part of an inclusive and welcoming community
- Receive outstanding care, guidance & support through our highly valued one to one mentoring system and supportive, caring teaching
- Achieve excellent progress and attainment through our academic tutorial programme, regular monitoring and bespoke intervention

- Are fully prepared to achieve ambitious destinations, whether applying to university, an apprenticeship, employment or alternative choice such as taking a gap year
- Are encouraged and supported to develop their interests, skills and personal qualities through our enrichment programme (including the Duke of Edinburgh award and Extended Project Qualification), volunteering opportunities (such as National Citizen Service), and work experience
- Feel empowered to develop their leadership skills

We offer twenty-five A level courses, a level 3 Core Mathematics course, and a BTEC course in Health and Social Care.

In addition, we offer the Extended Project Qualification (EPQ) as part of our ambitious wider curriculum, and have a full programme of enrichment activities developed to provide students with the skills, attributes and personal qualities that will enable them to succeed whatever their interests.

Our site is fully accessible, and we welcome applications from students with SEND: if we are oversubscribed SEND students are prioritised for a place, and we ensure close liaison with SEND students, parents/carers and our Special Educational Needs co-ordinator to ensure smooth transition into sixth form and that any additional needs are effectively met.

General entry requirements:

V6 student general entry requirements: each application will be considered on an individual basis however the key entry requirements are: 5-7 GCSEs at Grade 4-5 or above, including Maths and English. Full details of our entry requirements can be found on our website: www.v6bristol.org

Open evening:

Our Sixth Form Open Evening to find out more about our provision will be held on Thursday 23rd October 2025– please see our website for full details.

All applicants will be invited in January 2026 to attend individual subject choice advice and guidance meetings and have an additional opportunity to visit our site, followed by an invitation to attend our Y12 Offer Holder Day which will take place in June 2026.



North Bristol Post-16 Centre (Cotham/Redland Green)

Senior Leader Post-16: Cotham:

Ms Jo Butler (Headteacher) / **Ms Aimi Potter**
(Director of Post-16)

Senior Leader Post-16: Redland Green:

Mr Ben Houghton (Headteacher) /
Mr Owen Tiplady (Director of Post-16)

SEN Lead: **Ms Marie Beaver** (Cotham) /
Mr H Southon (Redland Green)

Children in Care Lead:

Charlotte Taylor-Frappe (Cotham)
Mr N Lind (Redland Green)

Enquiries/Applications for Post-16 should be
sent to: post16@cotham.bristol.sch.uk for
Cotham and for Redland Green
post16@redlandgreen.bristol.sch.uk

Website: www.nbp16c.org.uk

Tel: Cotham: 0117 919 8100 or
Redland Green: 0117 353 3433

The North Bristol Post-16 Centre is a highly successful collaboration between Cotham and Redland Green Schools. We welcome students from schools all over Bristol and the surrounding areas into our vibrant, diverse and industrious community. Here, every young person is challenged and supported to make excellent progress before moving on to secure and ambitious future pathways.

General entry requirements

These are the entry requirements for students to gain access to our Level 2 and 3 study programmes. Students must also meet the relevant course entry requirements.

Programme of Study

Level 3 programme
(GCE A Level and/or Level 3 BTEC)

Entry Requirement

5 x GCSE at grade 4 (or above), including English language and mathematics.

Programme of Study

Level 2 foundation programme (BTEC Level 2 Business, with GCSE English and maths)

Entry Requirement

4 x GCSE at grade 3 (or above), including English language and mathematics.

Open events:

Please check on the webpage for details of upcoming open events.



St Bede's Catholic College

Senior Leader Post-16: **Lucy Kirkbright & Nick Sutton**

SEN Lead: **Roslyn Parry**

Children in Care Lead: **Derek O'Rourke**

Enquiries/Applications for Post-16 should be sent to Lisa Barton: sixthform@stbcc.org

Email: sixthform@stbcc.org

Website: www.stbedesc.org

Phone: 0117 353 3057

The Areté Sixth Form at St. Bede's Catholic College is specialist in providing Level 3 A Level courses. A number of students join us from other schools and we welcome applications from students already studying at St. Bede's as well students from other schools and colleges.

At Areté we strive for academic excellence by enabling students to achieve their full potential, combining academic work with an extensive co-curricular programme. The college has a distinctive culture and climate where staff actively promote a love of learning and intellectual curiosity. Areté has a calm, industrious and welcoming study environment. We support students to become active, critical and open-minded thinkers. Areté is a place where achievement, effort and diversity are valued and celebrated.

We offer a range of A Level courses and a study path which equips students with the skills they need to access competitive courses and increase their chances of study at the most respected academic institutions, if this is their desire. In addition, the Extended Project Qualification is available for those who seek to stand out and compete favourably with the best when applying to well-established universities. A number of

our students achieve Oxbridge and Russell Group university places as a result.

At Areté we want to ensure students are supported and valued. The Sixth Form is at the forefront of our college and we are committed to providing an excellent education which empowers all students to 'be the best they can be'.

General entry requirements:

5x 9-5 grades including English and Maths at Level 5 or above and a grade 6 in each subject (or related subject) you wish to study at A Level. For Maths and Chemistry A Level a grade 7 is required; for Further Maths A Level a grade 8 is required

Open events:

Thursday 6 November 2025



St Mary Redcliffe & Temple Sixth Form Centre

Senior Leader Post-16: **Mr Rob Shaw**

SEN Lead: **Mrs Pippa Whittaker**

Children in Care Lead: **Mr Jon Pike**

Enquiries/Applications for Post-16 should be sent to: On-line application & enquiries to **Mrs Kerrie Davis**.

Email: Davisk@smrt.bristol.sch.uk

Website: www.smrt.bristol.sch.uk

Phone: 0117 353 2073

St Mary Redcliffe and Temple is an 11-18 school with a large 6th form offering a big choice of A Level courses. The 6th form is based in its own building but has access to specialist facilities for creative and science subjects in the main school building. We are committed to high achievement for students of all abilities, to building a strong sense of community and to developing well-rounded students who have a strong concern for issues of social justice and equality. We take care to meet the needs of all students with additional learning or support needs.

General entry requirements:

To do three A level subjects plus a supplementary course we require at least 665544. Including 5 in English (Lang or Lit) and 4 in Maths.

To start four A Level subjects we would normally expect at least 776655.

Including 6 in English (Lang or Lit) and 5 in Maths.

Open events:

Thursday 16 October 2025

Wednesday 5 November 2025



Trinity Academy

Senior Leader Post-16: **Eiron Bailey, Headteacher**

SEN Lead: **Hannah Deans SendCo**

Children in Care Lead: **Kate Fiddian**

Enquiries/Applications for Post-16 should be sent to:

Email: enquiries@trinityacademybristol.org

Website:

www.trinityacademybristol.org/sixth-form

Phone: 0117 450 9379

If you want to be academically challenged, pastorally supported and have access to the richest of co-curricular experiences, Trinity 6th Form is the place for you to develop Head, Heart and Soul. We are the sister school of the oversubscribed Bristol Cathedral Choir School.

Head

Learning is central to everything we do. Our expert teachers deliver an exciting curriculum which enables our students to have a passion for learning and to find success. We offer over 20 A level courses and encourage our students to take an EPQ. Alongside our outstanding offer of traditional A levels, the school specialises in Music and the Performing Arts. Students opting for courses in the performing arts will have their courses enriched by close work with our key partners:

- Royal Welsh College of Music and Drama (Music)
- Trinity Laban Conservatoire of Music and Dance (Dance)
- Bristol Old Vic Theatre School (Drama)
- University of West England (Music Technology)

Heart

At Trinity we care deeply for our young people and help them to learn how to care for themselves, our community and the environment. To that end, we have a rich offer of support, mentoring and tutoring to ensure that our students achieve their absolute best coupled with an exciting programme of visiting speakers linked to a relevant pastoral curriculum. We are committed to every young person succeeding.

Soul

School shouldn't just be about learning in a classroom, it's about giving opportunities and experience that allow you to be the best version of yourself. We have carefully designed a programme to give you these opportunities and where possible, built in opportunities to gain accreditation eg Sport leader, Arts leader, Duke of Edinburgh Gold. We also recognise that our students need the best careers advice and information to equip and enthuse them for life after Trinity.

General entry requirements:

We will be looking for GCSE grades 6, 6, 5, 5, 5 and a 4 in English Language or Literature. All applications are considered against the published admission arrangements, a full copy of which can be viewed on the school website.

Open events:

October & November 2025 - please check the website for specific dates.

Other colleges and specialist schools in the local area

Bath College

Senior Leader Post-16: **Martin Sim**

SEN Lead: **Emily Cottle**

Children in Care Lead: **Alice Georgiou**

Enquiries/Applications for Post-16 should be sent to:

Email: info@bathcollege.ac.uk

Website: www.bathcollege.ac.uk/

Phone: 01225 328 720

At Bath College we offer a wide range of vocational and academic courses, and can help you find the right pathway to provide you with the knowledge and skills for your chosen career. Whether you'd like to go straight into work, or on to University, here at Bath College we will be with you every step of the way. College is a fantastic alternative to school, you can focus on what you really want to do, in an adult working environment. You will be encouraged to discover things for yourself, with help when needed. We will talk to you about your progress, so you will always know if you are achieving the right grades to succeed.

We have courses available in several fields, including Music Production, Hair and Beauty, Digital Media Production, Photography,

Fashion and Textiles, and many more at our Bath City Centre campus. We also have trades-focused courses like Carpentry, Stonemasonry, Plumbing, Electrical Installation, and Motor Vehicle Maintenance

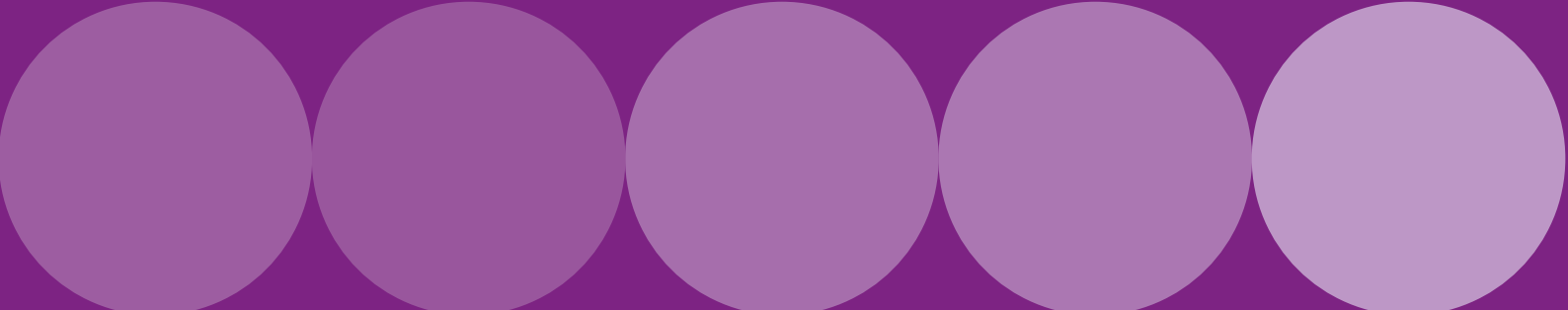
at our Somer Valley Campus, alongside Engineering, Animal Care, and other courses. Whatever you're interested in, Bath College has something for you.

We also offer nine of the new T-Levels across digital skills, business, education and childcare, vehicle maintenance, and other areas. Lastly, we work with local businesses so that we can offer Apprenticeship Programmes across a wide range of industries, from hospitality to construction trades and even business. Our apprenticeships are fantastic opportunities to earn while you learn.

SEND

Bath College's Foundation Learning Programmes are designed to meet a range of needs for learners with SEND, SEMH or other barriers to their learning. Learners are generally 16-19 years old without an EHCP and up to 24 years old with one. There is provision for learners who are 'Pre-Entry' at our new SEND Centre at the Somer Valley Campus. These learners will follow a curriculum designed around Pathways for Adulthood and making life choices.





The Life and Independent Living Skills (LILS) programme is designed for SEND Learners and offered at Entry 1, Entry 2 and Entry 3 levels. Learners are assessed before joining the college and are able to progress through the levels for up to three years, if appropriate. The curriculum for the LILS programme focuses on the 'Preparations for Adulthood' agenda, which aims to equip young people with SEND with the skills they need as they move into their adult lives.

Step Up is a programme offered at Entry 3/ Level and is designed to help young people develop skills through emotional, social and educational support and development in order to progress to other levels of programmes. Students undertake a wide range of activities including volunteering, cookery and sport. Students are likely to have left school with 'spiky' profiles meaning they may have far greater levels of ability in some areas than others. We develop individual learning plans with some learners, so that some students may be re-taking GCSEs while others are working on lower levels of literacy and numeracy. Each class is supported by a member of the Inclusion Team.

Our Pathways to Adulthood (PfA Pre-Entry) takes place at our Wellow House SEND Centre at our Somer Valley Campus, where you will have access to an accessible kitchen, in-house flat, sensory room, and de-escalation room. Our learning is structured around the individual and is based on each learners Education, Health and Care Plan (ECHP) outcomes. Learners can stay on the PfA for 1-3 years depending on progress.

General entry requirements:

Dependent on course and chosen level of study. Please see the courses on the website for more details.

Open events:

City Centre Campus: 8 October 2025,
22 November 2025 (10am-1pm),
25 March 2026

Somer Valley Campus: 5 November 2025,
4 January (10am-1pm), 29 May 2026

Dual Campus – 14 January 2026 - SEND open event, 11 February 2026 – Apprenticeship and T-Level open event

All tours are 4-7pm unless otherwise specified.

For bespoke tours of either campus please contact:

schools@bathcollege.ac.uk

Blaise High School SEN Post-16

Senior Leader Post-16: **Jim Harvey**

SEN Lead: **Samantha Nutt**

Children in Care Lead: **Nicole Cerullo**

Enquiries/Applications for Post-16 should be sent to **Patricia Hopkins**

Email: hopkinsp@blaisehighschool.co.uk

Website: www.blaisehighschool.co.uk

Phone: 0117 903 0100

Blaise High School's Post-16 provision is only available to students with an EHCP for learning difficulties, who need a smaller, more personal and nurturing environment directly after leaving Year 11. The students follow a two-year course developing independent living skills, confidence and knowledge of the world of work. They also continue to study Maths, English and ICT as well as having access to lessons in the Arts and PE. The aim of the course is to help students prepare towards either an appropriate College course or enter into the world of work.

The provision caters for a maximum number of 10 students and is based both in the classrooms and learning spaces of our main school and a specialist Post-16 bungalow which is situated on the Blaise High School site. The bungalow enables students to thrive in a calm and quiet environment whilst giving them the opportunity to practise everyday life skills such as cooking, cleaning and gardening.

The course enables Blaise High School staff to deliver a personalised learning programme which is able to adjust and react to the changing needs of the students as well as enable staff to take advantage of many opportunities within the wider community which help develop important life skills for our students.

General entry requirements:

An EHCP is required to access the provision.

There are no specific exam requirements.

Open events:

Please check our website for event dates.



Digitech Studio School

Senior Leader Post-16: **Mike Edwards**

SEN Lead: **Carolyn Goh**

Children in Care Lead: **Carolyn Goh**

Enquiries/Applications for Post-16 should be sent to: **V Balasco**

Email: info@dssb.clf.uk

Website: digitechstudioschool.co.uk

Phone: 0117 992 7100

Digitech is a small studio school that delivers a specialised curriculum for progression into the creative digital and high-tech sectors.

Digitech is perfect for coders, designers, creatives, film makers, innovators and entrepreneurs of the future.

It is important to us that students have high quality experiences of employability. This includes working alongside employers in school and in work experience. Digitech in a prime location offering links to businesses and employability opportunities in Bristol, South Gloucestershire and Bath.

Accredited through Cambridge Technical Diplomas

- Coursework
- UCAS Points
- Equivalent to 3 A levels
- Resit English and Maths
- Bursaries

Level 3

Pearson E Sports BTEC

Level 3

RSL Creative Digital Media

Level 3

OCR Multidisciplinary Art and Design

Level 3

RSL Music (Creative Music Industry)

General entry requirements:

We are looking for students who have a genuine interest in their chosen Diploma courses. This can be evidenced through GCSE qualifications in relevant subject areas or a portfolio of work.

Ideally students need grade 4's or above in English, maths and any relevant subject areas.

We also welcome applications from students who have gained 3's in English and Maths.

Open events:

Tuesday 16 September 2025 (Whole School)



Learn@ Knowle DGE Academy

Senior Leader Post-16: **Matt Carroll**
Jayne Townsend

SEN Lead: **Nicholas Field**

Children in Care Lead: **Nicholas Field**

Enquiries/Applications for Post-16 should be sent to **Kate Lee-Wells** (Head Teacher)

Email: school@knowledgeacademysch.org.uk

Website: www.knowle-dge.bristol.sch.uk

Phone: 0117 370 8030

The Sixth Form is a brand-new standalone building with modern teaching facilities, labs, workshops and sports facilities.

General entry requirements:

All students require an up-to-date Educational Health Care Plan.

Open events:

Please check on the website

Knowle DGE Academy Sixth Form is a Key Stage 5 provision based in Bristol which provides education for students preparing for college and adulthood.

We are a specialist provision who work with young people with varied needs. Our students have many different requirements ranging from Speech Language Communication Needs, Autism and Social Emotional and Mental Health needs.

We offer Sixth Form post-16 places with the opportunity to study many different subjects. Photography, Motor Vehicle Maintenance, Performing Arts, Land Based Studies, Construction, Resistant Materials Sports Leaders, History, Art and including English, Science, Animal Care and Mathematics up to GCSE level.

In addition to these subjects, we encourage students to participate in our WOW curriculum focussed on the essential life skills needed for a young person. We also offer a bespoke "Work Experience" program with job coaching, which has seen students working in the "Motor Trade", "Retail Sector", "Gardening" and "Domestic Services". We have an independent careers advisor who helps students build transition plans for moving on beyond the Sixth Form.



Olympus Post-16

Senior Leader Post-16: **Tom Hill**

SEN Lead: **Susie Beresfordwylie**

Children in Care Lead: **Susie Beresfordwylie**
Susie.beresfordwylie@olympustrust.co.uk

Enquiries/Applications for Post-16 should be sent to: **Sarah Mason**

Email: sarah.mason@olympustrust.co.uk

Email: enquiries@olympustrust.co.uk

Website: www.olympustrust.co.uk

The Olympus Post-16 Partnership consists of Abbeywood Community School, Bradley Stoke Community School, Patchway Community School and Winterbourne Academy. Both external candidates and internal students must meet the minimum academic entry criteria before they can be eligible for a place. Applications will be considered for admission at the age of 16+ and can be made via The Olympus Academy Trust website.

The application form can be found online at www.olympustrust.co.uk/post-16/the-application-process/ Offers based on predicted results will be made by the end of April and confirmed or reviewed following GCSE results in August. Students must have concluded their studies by the end of the academic year during which they reach the age of 19, in accordance with our Funding Agreement with the ESFA. All students will be expected to study three subjects for the full duration of their studies.

Should the school be oversubscribed in year 12, initial allocations will be made in accordance to the following criteria:

Looked after and previously looked after children, including internationally adopted previously looked after children

Applicants living within the APR

All other applicants

Academic entry requirements for Level 3 programmes of study are GCSE grade average point score of a minimum of a grade 4 across five GCSEs or equivalent, which includes a GCSE in English Language or English Literature at grade 4 or above. In addition, all Level 3 courses have additional unique entry requirements, which must also be met. The full list of entry criteria for each course is available from the relevant centre.

General entry requirements:

Entry requirements apply to both internal and external applicants and all offers will be designed to provide a suitable programme for each applicant. Reasonable adjustments may be made to comply with equality and disability legislation.

Open events:

Abbeywood: 4 November 2025

Bradley Stoke: 5 November 2025

Winterbourne: 6 November 2025

South Gloucestershire and Stroud College

Senior Leader Post-16: **Gavin Murray**

SEN Lead: **Florence Hiatt**

Children in Care Lead: **Pez Perrin**

Enquiries/Applications for Post-16 should be sent to: Admissions Team, Stroud Campus, Stratford Road, Stroud GL5 4AH

Email: info@sgscol.ac.uk

Website: www.sgscol.ac.uk

Phone: 0800 056 7253

At SGS College, we strive to provide clear, high-quality professional and technical routes into apprenticeships, employment and self-employment as well as to Further and Higher Education alongside robust academic routes. To support progression, we provide high-quality career pathways in each of our departments through Intermediate, Technical, Academic, Higher and Professional qualifications and have an extensive Apprenticeship offer.

Our full-time study programmes are carefully designed to blend knowledge, practical skills, structured support, and challenge. They promote the development of confident, articulate and professional learners who are well-prepared for their next steps. Learners typically attend college for 3 to 4 days per week. Our programmes incorporate a core academic or vocational qualification (such as a Level 2 Diploma in Sport or A Levels), English and maths (via Functional Skills, GCSE resits or upskilling), work experience or placements, enrichment activities, and tutorial support. In addition, our curriculum nurtures softer skills, including effective communication, teamwork, and self-confidence.

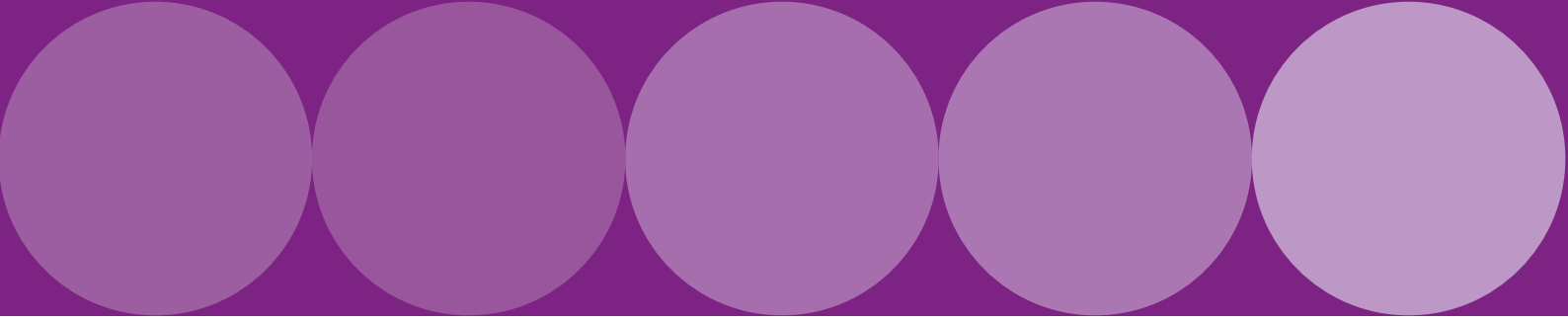
Apprenticeships at SGS

Our Apprenticeship programmes, which span Levels 2 to 5, allow learners to earn as they learn. They offer a cost-effective route to higher qualifications, including degree-level study, without incurring tuition fees or loans. Apprentices typically attend college one day per week and work with their employer for the remainder of the week. Programmes are built around knowledge, skills, and behaviours, supporting learners to meet the requirements of their apprenticeship standard. Apprentices also receive personal and social development support to build problem-solving, critical thinking, and positive attitudes to learning and work, helping them aspire to and achieve ambitious career goals.

SGSPLUS+

SGSPLUS+ is SGS College's holistic personal and social development programme, designed to enhance learner development beyond academic study. It combines key services including tutorials, enrichment, careers guidance, work experience, digital literacy, wellbeing, and learner voice within one coherent framework.

The programme begins with **WelcomeFEST**, a structured induction supporting students to settle into college through initial assessments, team-building activities, and essential service information. Throughout the academic year, learners follow a **Tutorial Scheme of Work** that covers topics such as mental health, British values, equality and diversity, and financial wellbeing – all tailored to learners' age and level. The content is responsive to both local and global events and encourages reflection through learner logs.



Enrichment is integral to SGSPLUS+ and the wider student experience. This includes subject-specific activities, centrally coordinated trips and events, and opportunities to join SGS Sport, our sports academy programme. The college also encourages cultural engagement through the **EDI Events Tour**, with partnerships including Bristol Pride, St Pauls Carnival, and the Bristol Refugee Festival. A key element is the **Voice of the Learner**, a structured system that empowers learners to influence college life through feedback and engagement at multiple levels.

The overarching goal of SGSPLUS+ is to ensure learners are not only prepared for further education and employment, but are also equipped with the skills, confidence and social awareness to thrive in a diverse and fast-changing society.

SGS Oasis – Specialist SEND Provision (Stroud Campus)

SGS Oasis is a specialist department for learners with Special Educational Needs and Disabilities (SEND), particularly in the areas of Communication and Interaction (Autism Spectrum Condition) and Social, Emotional and Mental Health.

Many learners have experienced educational disadvantage or extended periods out of education. Through therapeutic support and a nurturing approach, we help them re-engage with learning and rebuild confidence. Oasis offers flexible, individualised education programmes for around 20 learners, aligned with their Education, Health and Care Plans (EHCPs). Courses usually run for one to three years, with the aim of transitioning learners into mainstream college and supporting the development of life skills.

We work closely with professionals such as psychologists, speech and language therapists, and occupational therapists to offer high levels of support in a calm, safe environment. Teaching is delivered on a 1:1 or small group basis, with opportunities for accreditation. The curriculum focuses on literacy, numeracy, personal development (PSHE), wellbeing, and community engagement, helping learners plan and prepare for adulthood.

SGS CHASE – Post-16 Specialist SEND Provision (Stroud Campus)

SGS CHASE is a full-time, five-day specialist programme for learners with moderate to severe learning difficulties and disabilities, supported by EHCPs.

The provision supports 25 learners with a tailored, flexible curriculum over a period of up to three years. The focus is on preparing learners for adulthood, further education, or employment. Learners benefit from small group or individualised teaching, a total communication approach, and a dedicated team of teaching and support staff with expertise in SEND.

The curriculum develops skills in the following areas:

- Independent living and preparation for adulthood
- Communication and self-advocacy
- Personal and social development
- Volunteering and employment

A therapeutic learning model is in place, supported by a multidisciplinary team including a clinical psychologist, speech and language therapist, occupational therapist, and music therapist.

College-Wide Support for Learners with Additional Needs

All learners at SGS are supported to achieve their potential. We strongly encourage applicants to disclose any additional needs, including those related to physical, learning or mental health difficulties, so that we can implement appropriate support and reasonable adjustments.

Our Additional Learning Support (ALS) team works closely with learners, families, and external agencies to coordinate and deliver timely, personalised support. The **SGS Total Support Guide** ensures consistent, accessible provision across the college. It enables staff to identify barriers early and direct learners to the most suitable support services.

Examples of support available (subject to assessment and funding)

- In-class support
- Assignment and study skills help
- Adaptation of learning materials
- Literacy and numeracy interventions
- Assistive technology
- Support for neurodivergent learners
- Physical and sensory support
- Careers and work experience guidance

Wellbeing support includes:

- Mentoring and small group interventions
- External referrals
- Counselling and online resources
- Advocacy and youth work.

Support with transitions:

- Taster sessions and individual support at open days
- Summer workbook transition toolkits
- Bespoke transition plans for EHCP learners
- Liaison with schools, services, and parents/carers
- Monitoring during probation and beyond

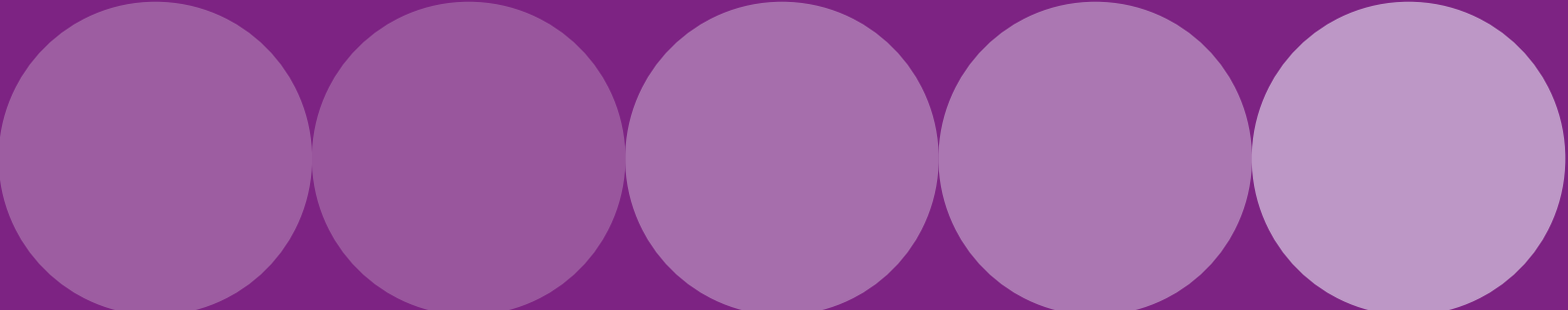
EHCP support:

- Initial reviews during the first term
- Annual reviews
- Progress monitoring and guidance
- Access to the dedicated EHCP coordination team

We ensure that learners with EHCPs have a voice in all decision-making. Annual reviews and multi-agency meetings are coordinated collaboratively with learners, parents/carers, local authorities, and prior education providers. An enhanced transition programme is available to support a positive start to college life.

Each subject area has a designated **Education and Wellbeing Mentor**, who works with learners and staff to create and monitor individualised pastoral and academic support plans.

SGS has a strong support network for **Young Carers, Looked-After Children (LAC)** and **care leavers**. We provide opportunities for peer support, multi-agency collaboration, and targeted pastoral support. PEPs and relevant meetings are coordinated by the Education and Wellbeing team to ensure each learner receives the care and attention they deserve.



All full-time and apprentice learners are assigned a **personal tutor**, who they can approach for both academic and personal guidance. Tutors can make referrals to internal services through the Total Support Guide. Learners can also self-refer to the **Education and Wellbeing team** or **Counselling service**, who can signpost or refer to external agencies if further support is needed.

When significant academic or career decisions arise, learners may book guidance appointments with the college's **Careers Advisers**. Tutors are responsible for ensuring teaching methods are inclusive and accessible, working with Learning Support Workers to tailor delivery and ensure meaningful impact.

Entry Level learners receive enhanced tutorial support from their personal tutor and curriculum team. This is closely monitored in collaboration with the ALS department.

General entry requirements (Full-Time Study):

- **A Level:** 5 GCSEs at Grade 5 or above, including English and Maths (plus subject-specific requirements)
- **Level 3 Vocational:** 5 GCSEs at Grade 4 or above, including English and Maths
- **Level 2 Vocational:** 3 GCSEs at Grade 3 or above, including English and Maths
- **Level 1 Vocational:** 3 GCSEs at Grade 2 or above, including English and Maths
- **Entry Level:** No formal qualifications required

Apprenticeship requirements are set by the employer in accordance with the relevant Apprenticeship Standard.

Upcoming Open Events (from September 2025 onwards)

Please visit our website for full details and booking information:

Thursday 25 September 2025 (5.30pm–8pm):
A Levels only (Filton Campus)

Saturday 11 October 2025 (10am–1pm):
All campuses, all subjects

Saturday 22 November 2025 (10am–1pm):
All campuses, all subjects

Saturday 24 January 2026 (10am–1pm):
All campuses, all subjects

Thursday 30 April 2026 (5.30–8pm):
All campuses, all subjects

Weston College

Deputy Principal: **Ben Knocks**

SEN lead: **Sam Mayhew**
(Assistant Principal SEND)

Children in Care Lead: **Siobhan Wardle**
(Children in Care Coordinator)

Enquiries/Applications for Post-16 should be sent to: www.weston.ac.uk

Website: www.weston.ac.uk

Phone: 01934 411 411

Based in Weston-Super-Mare, Weston College delivers education and vocational training to nearly 30,000 learners across the country.

The College provides high quality and inspirational teaching and learning and is regarded as one of the top FE colleges in the UK having won numerous regional and national accolades. The College is the South West Apprenticeship Training Provider of the Year and is a national Centre for Excellence for Special Education Needs and Disabilities (SEND). In the last 12 months, the College has been graded 'Good' with 'Strong' skills by Ofsted and is one of only a small number of colleges to be awarded Gold by TEF for its higher education provision.

At Weston College we work to the maxim 'careers not courses'. We understand that this is simply one phase in the educational journey, which is why our programmes aim to prepare students for their next step – whether that's a further learning or the world of work. Extended work and industry placements also feature prominently in the curriculum of all programmes and with this in mind, we are extremely proud that well over 90% of our full-time learners move on to employment or further learning, with 95% of our level 3 students who decide to apply to university receive an offer of place.

Weston College has numerous Career Excellence Hubs as a unique mechanism to align its curriculum to the needs of employers. Each Career Excellence Hub offers the very best in real-world learning with curriculum endorsed by industry-leading employers. This also includes unrivalled support in wellbeing, inclusive practice/SEND and digital with an ambitious vision linking to WorldSkills UK - to raise aspirations of learners regardless of their starting point in life.

To find out more and read the College's Careers Excellence Hub charter. The Careers and Enterprise Company recently said "Weston College are at the forefront of innovation in career education, advice and guidance. The development of their Careers Excellence Hubs is just one shining example of how they are supporting their students to take their best next step out of education and into the wider world."

The College offers students the opportunity to study technical or academic programmes, as well as an ever-growing work-based learning provision. Whether it's liaising with businesses and universities across the country to make sure that students are taught relevant and up to date skills, creating the best facilities in the region for them to study in, or selecting the top teachers with current industry experience. Weston College ensures its students are provided with the right learning environment to reach their potential.

Weston College students receive an outstanding level of Learning Support. Our innovative and unique Specialist Support Model ensures staff have the specialist skills and knowledge to deliver high-quality, personalised support programmes that effectively meet the needs of learners with Learning Difficulties and Disabilities.

General entry requirements:

Entry and Level 1 Study Programmes

GCSE profile below the minimum expectation for level 2.

Level 2 Study Programmes

5 GCSEs at grade 3 or above.

Technical Programmes

5 GCSEs grades 4-9

Sixth Form Programmes

5 GCSEs grades 4-9, though some A Levels will require grade 5 or higher.

Level 3 Study Programmes

T Levels require 5 GCSEs at grade 9-5 (including English and Maths) or a relevant Level 2 qualification at Distinction or Distinction* (including English and Maths at grade 9-5).

If you have any questions regarding entry criteria, please contact the College's Information Services team on 01934 411 481 or if you have any questions around careers then contact our career specialists on 01934 411 411.

Open events:

What Next?' careers showcase event
24 September 2025

Open Evening 14 October 2025

Open Evening 12 November 2025

Apprenticeship Open Evening 5 February 2026

Open Evening 25 March 2026



Training Providers

Access Creative College

Senior Leader Post-16: **Jon Domaille**

SEN Lead: **Chelsea Evans**

Children in Care Lead: **Chelsea Evans**

Enquiries/Applications for Post-16 should be sent to: charlie.grier@accesscreative.ac.uk

Email: admissions@accesscreative.ac.uk

Website: www.accesscreative.ac.uk

Phone: 0117 733 29650

Access Creative College is the UK's first choice destination for school leavers who want to follow their passion for a career in the creative industries.

We encourage you to think outside the box with the help of tutors, industry guests and creative work experiences. Assessment is based on practical project work rather than exams.

Our ex-students include, Ed Sheeran, Jess Glynne, Rita Ora and JP Cooper. We also have loads who have gone into other industry roles, from being a head of a radio station to running stages at the Glastonbury Festival. Need we say any more?

General entry requirements:

4 GCSEs at Grade 4-9

Open events:

18 October 2025

29 November 2025

24 January 2026

21 March 2026

27 June 2026

25/26 Taster Day 18 April 2026



A2A (Hartcliffe and Withywood Ventures)

Senior Leader Post-16: **Andrew Melbourne**

SEN Lead: **Andrew Melbourne**

Children in Care Lead: **Andrew Melbourne**

Enquiries/Applications for Post-16 should be sent to: a.mel.melbourne@hvv.org.uk

Website: www.hvv.org.uk

Phone: 0117 978 8968 or 0117 978 1708

General entry requirements:

GCSE English or Maths Grades 4 (C equivalent) or below.

Enrolments commence from 1 September 2025.

We recruit throughout the year and are happy to show any interested potential learner around the A2a training centre and carry out an informal interview if required.

For over 30 years HWV has provided training opportunities for young people aged 16 to 19. Our current A2A foundation programme supports young people to: achieve realistic personal and team targets; improve confidence; remove barriers to learning and employment; gain or improve the following qualifications - GCSE's English & Maths (last date of GCSE enrolments will be Friday 12th December 2025), Functional Skills English, Maths Entry 1 to Entry 3, IT Skills and Personal Development.

We enrol students throughout the academic year and keep class sizes below 10, where possible to ensure as much individual support as possible can be offered to each and every student. Every student is also allocated a personal support advisor who will provide career IAG and additional pastoral support where required.



Babbasa

Senior Leader Post-16: **Sangeetha Wynter**

SEN Lead: **Sangeetha Wynter**

Children in Care Lead: **Sangeetha Wynter / Charlotte Smith**

Enquiries/Applications for Post-16 should be sent to: admin@byep.org.uk

Email: admin@byep.org.uk

Website: www.babbasa.com/

Phone: 0117 924 1707

At Babbasa we can offer 1:1 personalised mentoring from industry professionals, access to work taster days, work experiences, and full or part-time jobs, as well as university application and enterprise support. We take a strengths-based approach to supporting our young people with their ambitions, helping to raise their confidence, widen their network and build their skills. We also offer youth empowerment and volunteering programmes, CV and interview skills workshops, as well as career-focused events and socials to help young people gain skills and experience, broaden their network, gain insight into different industries, and gain confidence. We want to empower the young people we work with, and all are welcome into the office at any time for personalised, 1:1 support.

Programmes

Support Programme: Get Confident!

The support programme is dedicated to supporting and empowering young people who face barriers in pursuing their professional ambitions who are not in education, employment and training, or are at risk of no longer being in EET.

Within the support programme young people will receive Emotional and Mental

Well-being Support, we aim to empower young people to develop effective coping strategies, regulate their emotions, and overcome psychological challenges. Through workshops, counselling, and group activities, we aim to equip young people with the resilience and inner strength needed to thrive. Supporting young people in breaking down barriers and equipping them with the resources and opportunities to help them strive engage employment and education.

Leadership and mentoring programme:

Get ready! Unlocking potential. This is for all ambitious and driven young people who want to build on their leadership skills. We support young people with a combination of soft-skills training, exhilarating challenges, and an opportunity for personalised professional mentorship from industry leaders

Young people have a chance to unleash their talents, gain invaluable insights into the workplace, and master the art of showcasing their skills. Through our experiential challenges, young people get the opportunity to organise awe-inspiring career-oriented events. Bringing together industry leaders, showcasing their expertise, and leaving a lasting impact on all who attend.

Our Mentor Programme pairs young people up with a seasoned professional who is willing to share their experiences of their career progression and the industries they work in. Whether it's within the arts, technology, or any other field. Through personalised one-to-one sessions, the young people will receive invaluable support, advice, and guidance from someone who has already walked the path they aspire to. Moreover, they may even have the opportunity to shadow their mentor at their workplace, gaining first-hand insight into their craft.



Recruitment and Placement programme: Get started!

Our recruitment programme explores exclusive job opportunities that young people registered to babbasa can only access. Our partners have brilliant pathway programmes that will empower you to thrive in your desired industry and get your foot in the door of the world of employability.

Young people get support in crafting an exceptional CV, composing compelling cover letters, and mastering interview skills are vital steps towards securing their dream job. Within the Placement programme young people will receive support in both group settings and personalised one-on-one sessions. We will help young people navigate the complexities of the job application process, ensuring they know what they need to consider to stand out from the crowd. Additionally, we will support young people in identifying suitable training courses and work experience opportunities to enhance their skills and increase their employability. Young people will also have access to work experience opportunities and insight days into a broad range of industries.

General entry requirements:

Young people between the ages of 15-30, from ethnically diverse or low-income backgrounds.

Open events:

Monthly mentoring club which are a regular networking opportunity

Office drops in are on Tuesdays and Thursdays, please call in or email in advance: 0117 924 1707 or shamil.ahmed@byep.org.uk.

BEMA - British Engineering Manufacturers Association

Senior Leader Post-16: **Martin Wear**

Enquiries/Applications for Post-16 should be sent to: Apprenticeship team, BEMA, 5A Stover Road, Yate, Bristol BS37 5JN

Email: Admin@bema.co.uk

Website: www.bema.co.uk

Phone: 01454 321 356

Open events

February -

For visits contact Admin@bema.co.uk

BEMA provide provision for Engineering Apprenticeships for the Southwest of England. BEMA specialise in supporting employers with high calibre individuals in Mechanical, Manufacturing, Machining and Maintenance Engineering. An apprenticeship is four years where you will gain knowledge, skills, and behaviours to fulfil the requirements of the apprenticeship and the needs of your employer. The first year is an intense period of training in our workshop developing skills, knowledge, and behaviours. The subsequent years will be based with your employer with day release to the Centre to further your knowledge.

General entry requirements:

5 GCSE's including Maths, English, and Science grade 5 or above. All applicants are considered on their merits.

All suitable applicants will undertake an assessment process for Maths, English, Science, Aptitude and Dexterity.

Applications and vacancies start in February and would typically be completed June/July ready for September start.



Boomsatsuma

Head of College: **Reece Morrell**

SEN Lead: **Megan Stroud**

Children in Care Lead: **David Thorpe**

Enquiries/Applications for Post-16 should be sent to: education@boomsatsuma.com

Website: www.boomsatsuma.com

Phone: 0117 942 8429

Full Course List:

- Creative and Digital Media
- Film and Television
- Games Design and Development
- Sports Media Production
- Photography

Guided by industry. Driven by creativity.

Boomsatsuma is an independent education provider based in Bristol and the Southwest. We provide college diplomas and degrees that deliver creative industry training in television and filmmaking, photography, game design, digital media and sports media.

We exist to give young people control over their own learning, their own journey and their own success. We don't believe in outdated, standardised education models that force everyone into the same mould. Instead, we create dynamic, industry-focused learning experiences that fit the individual, not the other way around.

Our team isn't just made up of educators. We are creators, makers and innovators who work side by side and within the industries we teach. We don't just prepare students for the world of work; we bring the world of work into the classroom.

We don't just teach skills. We build confidence. We cultivate resilience. We empower young people to step into the creative industries not as observers, but as active participants. At Boomsatsuma, success isn't about ticking boxes. It's about finding your voice, honing your craft, and taking ownership of your future.

General entry requirements:

Find out more and apply at www.boomsatsuma.com

Open events

Book onto open events at: www.boomsatsuma.com/opendays

Get in touch with any questions at: education@boomsatsuma.com

Bristol Bears Set Play Programme

Senior Leader: **Josh Ladbury**

Safeguarding Lead: **Rich Berry**

Enquiries/Applications for Post-16 should be sent to: **Josh Ladbury**
jladbury@bristolbearsrugby.com

Email: bwoolfson@bristolbearsrugby.com

Website: www.bristolbearsrugby.com/bears-foundation/programmes/

Phone: Josh Ladbury 07752 022 689

Bristol Bears Set Play Programme is based at St Bernadettes Rugby Club. Set play is a new, place-based intervention that will be delivered in south Bristol, empowering young people aged sixteen-to-eighteen identified as being at high risk of offending to take positive steps towards improving their engagement in education and employment by developing new life skills, improving their mental and emotional resilience, and forming achievable aspirations for their future.

Key Aims

Every young person will be working on their Employability skills, which aims to develop skills and confidence required for employment such as interview techniques, career planning and job application skills etc. During the sessions young people will learn the skills needed to apply for jobs and give them a better chance of gaining positive employment when they are ready to move on from the program. We aim to use industry contacts to put on workshops for the young people on a range of topics. The sessions will be practical based with no assessments but using tools to build a bank of resources with the aim to help them with future employment.

Programme Structure

The programme runs through the year on a Wednesday at 1pm for 1-2hours. Each session focuses on a specific skill to add to the young person's bank of resources. There is no specific time length for how long the young persons must commit to the program when they are ready to apply for jobs and move on they can.

General entry requirements:

Age 16-18. No qualifications required.

For more information:

Scan the QR below, or visit
www.shorturl.at/F6vkH



Bristol City Robins Foundation

Senior Leader Post-16: : **Ben Mackenzie**

SEN Lead: **Sophie Hart/ Jim Churches**

Children in Care Lead: **Karen Westlake**

Enquiries/Applications for Post-16 should be sent to **Sophie Hart/Beth Lees**

Email: education@bcfc.co.uk

Website:

www.bcfc.co.uk/robins-foundation/education

Phone: 0117 963 0636

Bristol City Robins Foundation is the official charity of Bristol City Football Club. We are a sport and education charity committed to making a meaningful impact across Greater Bristol. We use the power of sport and the strength of the club's brand to deliver inclusive and accessible opportunities to individuals of all ages, abilities, and backgrounds.

The Foundation offers a range of high-quality education programmes that support academic progress, personal development, and career readiness. We focus on using sport as a vehicle to inspire young people and raise educational achievement. Our academic provision has grown significantly since launching in 2011 and now includes eight post-16 and degree-level courses delivered at Ashton Gate Stadium (in partnership with Ashton Park School and Digitech Studio School) and City Academy Bristol in partnership with Digitech Studio School).

We provide a supportive environment where learners—regardless of football ability—can develop life skills, gain qualifications, and access meaningful next steps. Our education structure is designed to meet a range of learning needs and includes tailored pastoral support. We welcome students with EHCPs and ensure personalised approaches are in place to support their success.

Courses Offered:

- Post-16: BTEC Level 1, Level 2, and Level 3 in Sport and BTEC Level 3 in Sports Coaching & Development
- Higher Education: Degree pathways in Community Football Coaching & Development, Sports Coaching & Development, Football Coaching & Administration (Top-Up), and Sports Business & Entrepreneurship

Each post-16 course blends academic learning with practical football training. Students represent Bristol City FC in weekly fixtures and benefit from enrichment activities such as career-focused trips, work experience/volunteering, and international tours. Past destinations have included Croatia, Germany, Holland, and Portugal.

NEET Provision:

In 2024, we introduced a 6-week NEET programme for 16–18-year-olds not in education, employment, or training. The free course includes:

- CV and employability skills development
- Interview preparation
- FA Coaching Awards
- Practical coaching sessions
- Volunteer experience alongside Foundation community coaches

The programme aims to build confidence, independence, and progression routes into further education, training, or employment.

General entry requirements:

- BTEC Level 1 – Direct referral to the Robins Foundation
- BTEC Level 2 – Minimum of four GCSEs at grade 3, including English and Maths (or equivalent)
- BTEC Level 3 – Minimum of five 9-4 grades at GCSE, including English and maths (or equivalent)
- A strong interest in sport and playing football
- A commitment to professionalism and personal development.

Open events:

Book onto open events at <https://www.bcfc.co.uk/robins-foundation/education/post-16>

Open Evening: 1 October 2025, 6.30pm

Taster Session: 29 October 2025 10am

Open Evening: 11 November 2025, 6.30pm

Online Q+A Session: 8 December 2025, 6.30pm

Open Evening: 3 February 2026, 6.30pm

Taster Session: 18 February 2026, 10am

Online Q+A Session: 30 March 2026, 6.30pm

Taster Session: 15 April 2026, 10am

Open Evening: 6 May 2026, 6.30pm

Taster Session: 27 May 2026, 10am

Online Q+A Session: 8 July 2026, 6.30pm



Bristol Rovers Community College

Senior Leader Post-16: **Will Dixon**

SEN Lead: **Will Dixon**

Children in Care Lead: **Will Dixon**

Enquiries/Applications for Post-16 should be sent to: **Nathan Hallett-Young**

Email:
nathanhallettyoung@bristolroverscommunity.org.uk
willdixon@bristolroverscommunity.org.uk

Website:
www.bristolroverscommunity.org.uk/college

Phone: 0117 903 1152

Bristol Rovers Community Trust works with a wide spectrum of the community offering social inclusion, health, education and sports participation projects to give people the opportunity of enhancing and improving their life choices.

Bristol Rovers Community College – in partnership with the League Football Education (LFE) – offers 16-18 year-old (male and female) learners the opportunity to study sport-related qualifications, while representing Bristol Rovers. Learners will take part in an Education and Skills Funding Agency (ESFA) funded study programme, improving their knowledge of sport and applying this to the practical element of their programme to improve their technical, tactical and physical ability. Upon completion of the course, learners can progress to university or full-time employment. We will work hard to provide a supportive environment to allow learners to thrive, although research has shown that positive input from parents/carers is also vitally important. Throughout the programme, every learner will face many challenges as they make the transition from full-time schooling to the demands

of training and studying every day. The curriculum is designed to give the learners a real mix of practical coaching and theory based lessons. SEND learners on the course are supported through their journey with us and more support is given to SEND learners where necessary. We pride ourselves on setting an environment where all learners are comfortable having a conversation with any staff member at any point during the college day.

General entry requirements:

4 GCSE's at grade 4 or above.

Open events:

Open Evenings

Thursday 18 September 2025

Thursday 16 October 2025

Thursday 20 November 2025

Thursday 22 January 2026

Thursday 12 March 2026

Open Trials

Monday 27 October 2025

Monday 16 February 2026

Friday 17 April 2026

Friday 28 May 2026

Monday 3 August 2026

Monday 10 August 2026

Monday 17 August 2026

Bristol School of Acting

Senior Leader Post-16: **Sam Bridges**

SEN Lead: **Graina Pedersen**

Children in Care Lead: **Lisa Wellsford**

Enquiries/Applications for Post-16 should be sent to: auditions@bristolschoolofacting.com

Website: www.bristolschoolofacting.com

Phone: 0117 472 1643

General entry requirements:

Apply for all Bristol School of Acting courses at www.bristolschoolofacting.com/apply

Book onto open events at www.bristolschoolofacting.com

Get in touch with our super helpful and friendly team with any questions at hello@bristolschoolofacting.com

Welcome to Bristol School of Acting, the UK's newest drama school and the only one with a serious 16 – 18 course to enable you to take the first steps as a professional performer. Our Extended Diploma in Professional Acting gives you a drama school experience, and a qualification that is equivalent to 3 A Levels, and we're excited to announce our new Musical Theatre Extended Diploma, launching its first cohort in September 2025.

Full Course List

- Professional Acting, Level 3 Extended Diploma
- Musical Theatre, Level 3 Extended Diploma

We are committed to encouraging and creating diversity in professional actor training, from the perspectives we bring to the culture we create and the material we work on. In this spirit, and to make auditioning for us as accessible as possible, all of our auditions are FREE.



Circomedia

Senior Leader Post-16: **Sam Hopwood**

samh@circomedia.com

SEN Lead: **Rhiannon Lloyd**

rhiannonl@circomedia.com

Children in Care Lead: **Rhiannon Lloyd**

rhiannonl@circomedia.com

Enquiries/Applications for Post-16 should be sent to: admissions@circomedia.com

Website: www.circomedia.com

Phone: 0117 947 7288

Circomedia is a world-renowned training provider specialising in Contemporary Circus and Physical Theatre. For over thirty years, Circomedia has trained performers and artists with a passion for communicating and telling stories through physical skills.

For learners aged 16+ there is the Level 3 Diploma and Extended Diploma in Contemporary Circus and Physical Theatre. This BTEC is fully funded by the government for learners aged between 16 and 18*. The first year of the course (Diploma - Foundation Level) must be passed before graduation onto the second year (Extended Diploma Level). On completion, students will have gained the equivalent to three 'A' Levels which opens up access to continue their study at degree level.

The BTEC course is delivered in partnership with City of Bristol College. BTEC students are supported by our in-house Student Support and City of Bristol College's support services including a bursary for equipment and travel for those eligible.

The Circomedia degree course is accessible to those aged over 18. The degree is split into a two-year Foundation Degree in Contemporary Circus with Physical Theatre and a top-up third year to convert this FdA

into a full B.A. (Hons) degree. Circomedia also delivers the first and only M.A. in Directing Circus anywhere in the world.

Degree students have access to our in-house Student Support alongside all Bath Spa's learner resources. Students with specific learning disabilities and/or mental health issues can apply for Disabled Students Allowance.

General entry requirements:

*Learners applying for the BTEC course must hold GCSEs in English and Maths at grade 4 or above (or level 2 Functional Skills in English and Maths). We recommend having a further three qualifications at GCSE level, however this is not mandatory.

Learners applying for the BTEC course must be aged between 16 and 18 years on 31st August at the start of both academic years of the course to be eligible for funding. Learners will not be accepted onto the course unless they are eligible for funding.

Degree applicants need the equivalent of at least three 'A' Levels at grade CDD, or Level 3 BTEC Extended Diploma (MMP) and apply via UCAS. There is an Accredited Prior Experiential Learning option (APEL) for those who do not hold these qualifications, but who feel they have relevant experience to be able to study at this level. For further details, please see: www.bathspa.ac.uk/how-to-apply/apl

All applicants for all courses are required to attend/submit an audition, have an interview and submit a written task at a suitable academic level. BTEC Students are required to attend an Open Day.

Open events:

For all Open Days, please e-mail: admissions@circomedia.com

Claremont School

Senior Leader Post-16: **Marcia Shingfield**

SEN Lead: **Chris Coombs**

Children in Care Lead: **Chris Coombs**

Enquiries/Applications for Post-16 should be sent to: **Emma Richards**

Email: Claremont.sp@bristol-schools.uk

Website: www.claremontbristol.org.uk

Phone: 0117 353 3622

Our Post-16 curriculum focuses on the Preparation for Adulthood areas (Community Inclusion, Employability, Health and Independent Living). All our Post-16 students continue with an accreditation pathway which moves them on from the Key Stage 4 ASDAN – Transition Challenge, to the Personal Progress Award in which our learners can earn a range of accreditations. These areas are complimented by a more functional approach to numeracy and literacy and opportunities and links in the local community too. Additionally, where appropriate, students will also work towards their Bronze or Silver Duke of Edinburgh awards.

General entry requirements:

All students attending Claremont School require an EHCP and have to follow the consult process as required by Bristol City Council for placement identification and allocation.

Transition information event takes place in Term 5/6 of each academic year.



Creative Youth Network

Senior Leader Post-16:

Ylvi Jara, Creative Manager

Anne Mowbray, Alternate Learning Programme Manager

Enquiries/Applications for Post-16 should be sent to: Anne Mowbray/Ylvi Jara

Email:

anne.mowbray@creativyouthnetwork.org.uk
ylvi.jara@creativyouthnetwork.org.uk

Website: www.creativyouthnetwork.org.uk

1. Alternative Learning Provision for young people aged 7-18 struggling to engage at school: www.creativyouthnetwork.org.uk/Pages/Category/in-your-school

Working 1-2-1 or in a small group with a Youth Worker, young people are supported to identify the barriers and challenges they face, and work towards increased confidence, self-esteem and belonging. Our Alternative Learning Provision responds to the needs and interests of the young person, focusing on successful re-engagement with school and building positive relationships. This includes the opportunity to achieve an Arts Award – a nationally accredited qualification at either Bronze (Level 1) or Silver (Level 2). Referrals through school or local authority; please enquire about costs and further information.

2. Creative Futures is a programme for young creatives aged 16 to 25 interested in developing their creative practice and skills. With the aim to develop and provide diverse and accessible routes to progressing into the creative industries as artists and creative professionals. All art forms are welcome.

Creative Futures is part of The Creative Agency, supporting young people in the creative sector across the West of England Combined Authority. Working in partnership with Super Culture, Boomsatsuma and Bath Spa University.

Creative Futures includes:

- Short residencies with paid commissions in Bristol including industry professional mentoring and studio space
- Masterclasses in creative professional development
- Networking events to develop connections with peers and the industry
- Events and opportunities to share ideas and work in progress with peers in order to receive feedback and support

Find out more here:

www.creativyouthnetwork.org.uk/creative-futures-upcoming-events

3. Creative Courses

The Creative Courses are **FREE** for young people aged 11-19 and take place at different venues across Bristol and the South Glos area. Young people can join any term throughout the year; all courses are very inclusive and delivered by fully trained and qualified creative practitioners. We currently have Music, Theatre-Making and Visual Arts courses.

We believe everyone can find their voice through creativity. Our creative courses can help young people to realise their own artistic vision, giving them the skills, tools and networks to develop their creativity and turn their passions into professional paths.

Find out more here:

www.creativyouthnetwork.org.uk/Pages/Category/creative-courses

General entry requirements:

N/A

Discovery Education Centres Ltd

Senior Leader Post-16: **Simon Hunt**

SEN Lead: **Simon Hunt**

Children in Care Lead: **Samantha Peirce (DSL)**

Enquiries/Applications for Post-16 should be sent to: **Will Wenley**

Email: admin@discoveryeducationcentre.co.uk

Website: www.discoveryeducationcentre.co.uk

Phone: 07540 455 621

We will run level 1 BTEC in Construction, Hospitality and Catering BTECs, BTEC, Pre-Vocational studies BTEC.

Our offer includes:

- Individualised bespoke educational packages
- Collection and drop off for each student to and from their homes
- Food is provided throughout the day (breakfast, lunch and snacks)
- Attendance in any meetings or reviews and more.

General entry requirements:

None.

Open events:

You can come to see our provision at any time, please contact

admin@discoveryeducationcentre.co.uk
to arrange this

Greenhouse Learning

Senior Leader Post-16: **Rachael Tan**

SEN Lead: **Rachael Tan**

Children in Care Lead: **Rachael Tan**

Enquiries/Applications for Post-16 should be sent to: office@greenhouselearning.co.uk

Email: hello@greenhouselearning.co.uk

Website: <https://greenhouselearning.co.uk/>

Phone: 0117 463 0438

Description of the curriculum provision, including provision for young people with special educational needs:

Offering alternative provision, including academic tutoring for GCSEs, A Levels and Functional Skills, and mentoring to support with SEMH needs. Support with SEND, including autism, ADHD, dyslexia, PDA, global developmental delay.

Sessions take place at the young person's home, at their school where relevant, or at a location in the community, or sessions can be online.

General entry requirements:

No entry requirements



Greenlight Safety and Training

Senior Leader Post-16: **Sarah Lee**

SEN Lead: **Hazel Morley-Trapnell**

Children in Care Lead: **Hazel Morley-Trapnell**

Enquiries/Applications for Post-16 should be sent to: **Tim Carpenter**

Email: Learning@greenlightsc.co.uk

Website:

www.greenlightsc.co.uk/apprenticeships

Phone: 0117 432 0030

Open events:

shorturl.at/mjhDE

Greenlight offer a wide range of Apprenticeships in the Construction Industry; Carpentry, Plastering, Drylining, Bricklaying, Roofing and Property Maintenance. Durations range from 24 to 27 months unless prior learning is evident. Each applicant will be individually assessed to ensure they are suitable to undertake an apprenticeship and ready to trial for employment.

You cannot do an apprenticeship without employment and you cannot complete an apprenticeship without holding onto employment!

General entry requirements:

An initial assessment is completed for applicants. This includes the following, but not limited to

- Application Eligibility
- CSCS Card revision and awareness
- About Me
- Functional Skills Initial Assessments
- RPL
- Exit Interviews
- Trade familiarisation
- Apprenticeship structure and commitment

The King's Trust

Senior Leader Post-16: **Sarah Pritchard**

Enquiries/Applications for Post-16 should be sent to: outreach.Bristol@kingstrust.org.uk

Website: www.kingstrust.org.uk

Phone: 0800 842 842

The King's Trust runs a range of courses to support 16-30 year olds and help them boost their skills, employability and move into a positive outcome. Many of our courses offer additional mentoring and accredited qualifications and all our courses are free!

Get Started

Week long courses for NEET 16-30 year olds to explore their talents in new areas. One to one support and follow up workshops available to help you move into work, education or training. Topics include Art, Music, Health and Fitness, Cooking and more. Courses will be a mix of online and face to face.

Get Into

Two - Four weeks of training and work experience for NEET 16-30 year olds who want to work in a specific sector. Job opportunities at the end of the course. Sectors include IT and tech, security, hospitality, construction and more. Courses will be a mix of online and face to face.

TEAM

A twelve week, full time programme designed to support 16-25 year olds back into education or employment. A jam packed course full of activity, work experience, community projects and teambuilding. The programme is run by City of Bristol College and is a great transition for those young people who missed out on college places.

The course is fully accredited and is formally recognised as an education option!

Enterprise

Help for 18-30 year olds to set up their own businesses through interactive learning, workshops, mentoring and financial support. Courses are currently run online.

General entry requirements:

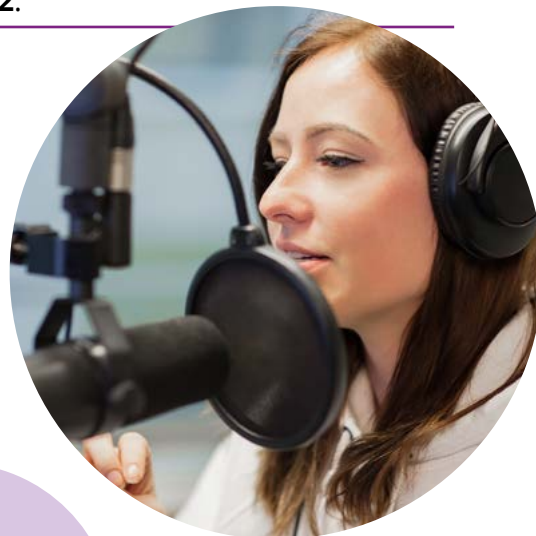
16-30 years old

NEET or under 16 hours of employment per week, or 14 hours of education

Any criminal record would need to be discussed but does not automatically exclude.

Open events:

We provide a 1-1 induction for every young person interested in a programme. To be booked on for a welcome call, please call our Customer Service Team on **0800 842 842**.



Kingsweston School

Senior Leader Post-16: **Emma Collins**
Area Manager

SEN Lead: **Adam Rider**

Children in Care Lead: **Christopher Coombes**

Applications for Post: ***consult process only**

Email: enquiries@kingsweston.bristol.sch.uk

Website: www.kingsweston.bristol.sch.uk/

Phone: 0117 903 0400

Our aim is to offer a personalised learning programme that prepares our young people for adulthood and helps them to develop and grow as individuals. We provide a functional and vocationally themed Post-16 curriculum that supports our young people in developing their confidence, keeping themselves safe and engaging with work experience and community inclusion linked to the following job sectors: horticulture; catering and hospitality; animal care; travel and tourism; healthcare; creative arts and media; sports and leisure; retail, manufacturing and enterprise; travel and tourism.

Work experience can be onsite with opportunities to work shadow or offsite, but this is dependent on the young person. We support our pupils with developing work-related skills and exposing them to varied job sector work environments so that they are able to make an informed choice about their future. We have discovery boxes which are vocationally themed to support our multi-sensory approach to learning and offer associated vocationally themed TEACCH tasks for our learners where it is appropriate and meaningful for them.

Literacy and numeracy skills are based around the Asdan life skills challenge and are linked to the vocational themes to

contextualise learning in some of our Post-16 classes. However, for our engage pathway, literacy and numeracy skills are linked through our functional engagement model. Pupils are encouraged to apply their literacy and numeracy skills within a range of varied vocational settings, making the application process meaningful and functional for the individual. We also offer the opportunity to study Functional skills level 1 and 2 for literacy and numeracy.

Alongside this, we also offer a range of other opportunities to achieve accreditation in different classes and these include the following: Asdan Personal Development Programme, Asdan Personal Progress, Asdan Short Courses.

We aim to develop the student's independent skills through supporting travel training, road safety and home management. We support our students to access facilities within their local community on a regular basis. Furthermore, we promote enterprise skills and run a Kingsweston onsite tuck shop.

We support pupils with their transitions to different placements after their time at Kingsweston so that they can be successful, confident and happy when they leave us. We also aim to develop skills for employability and/or where the young person can make a positive contribution. We aim to raise realistic aspirations of our young people and secure better outcomes for our young people. We want to keep our young people safe and promote the fulfilment of potential as well as develop skills to overcome problems and build resilience in our young people

General entry requirements:

EHCP is required

A diagnosis of ASC or SLD

Lifetime Training

Senior Leader Post-16: **Carl Cornish**

SEN Lead: **Claire Smith**

Children in Care Lead: **Michelle Kent**

Applications for Post-16 should be sent to:

Email: enquiries@lifetimetraining.co.uk

Website: www.lifetimetraining.co.uk

Phone: 0333 014 3669

Follow the link below to view our current Apprenticeship Vacancies:

www.lifetimetraining.co.uk/apprenticeship-vacancies

Established in 1995, Lifetime's founding principle was to support individuals and businesses to perform better by delivering outstanding training programmes. Quality is central to our business ethos and we work hard to achieve great results for our learners. Our efforts are acknowledged through our Ofsted Grade 2 and Training Quality Standard awards. Our above national-average learner completion and success rates have led to the development of long-standing relationships with employers and learners alike.

We are lucky to work with some of the best brands in a variety of sectors including Tesco, McDonald's, Brighter Horizons, Cancer Research UK, Four Seasons, Mitchells & Butlers, Places for People and Muller's. We offer Apprenticeships and self-funded training courses between Levels 2 – 5 across the following sectors:

- Fitness and Active Leisure
- Hospitality
- Health and Social Care
- Retail

- Business Admin
- Early Years Management

Lifetime will guide you through every stage of your Apprenticeship. From applying for a vacancy on Lifetime's career's website to completing your apprenticeship journey, Lifetime's Regional Trainer's and Learning Support Teams will support you every step of the way. To date we have had 7,000 learners progress onto a higher level Apprenticeship and 82% of our learners believed their Apprenticeship helped their career.

General entry requirements:

Entry requirements vary depending on the level of Apprenticeship, vocational area and employer requirements. For more information give us a call on 0333 014 3669 or visit our website:

www.lifetimetraining.co.uk

Open events:

Please check the website for details.



MPCT – Military Academies

Senior Leader Post-16: **Chris Bryant**

SEN Lead: **Sonya Hothi**

Children in Care Lead: **Steve Williams**

Learner Support Services:

enquiries@mpct.co.uk

Website: mpct.co.uk/military-preparation-college/

Phone: 0330 111 3939

General entry requirements:

There are no entry requirements but all persons interested will need to attend an interview.

Open Events

Every Friday between 0900 – 1600hrs

www.mpct.co.uk (Apply Now)

MPCT – Military Academies is a unique training college that helps 16–19-year-olds develop their fitness, vocational qualifications, employability, numeracy, and literacy skills to help prepare for employment, including rewarding careers in the British Armed Forces. Each military academy forms part of a network of over 40 academies across England and Wales.

We also have the option to study your GCSE Maths and English to sit exams in the summer series.

The unique active learning curriculum inspires students to achieve their personal best, with 50% of every day spent learning outdoors or taking part in physical training. The MPCT curriculum has been designed to develop our students' physical fitness, essential skills and self-confidence.

The college operates a 'roll on, roll off' joining process with no set deadline by which to apply, allowing new recruits to join on a weekly basis.

MPCT has a 92% progression rate into the military and other civilian progression.



Next Level Training (The Business Development Group of Reflections Training Academy)

Senior Leader Post-16: **Kate Sperring**

SEN Lead: **Suzanne Sewell**

Children in Care Lead: **Suzanne Sewell**

Enquiries/Applications for Post-16 should be sent to: **Laila Griffiths**

Email: recruitment@nextlevel-training.co.uk

Website: www.nextleveltraining.uk.com

Phone: 0117 922 1440, Option 2 /
07717 376008

Next Level is the Business Development Group within Reflections Training Academy, renowned as leading providers of Apprenticeships, Study Programmes and Learner Loans. Our expertise lies in offering comprehensive training programmes for individuals seeking to acquire new skills, catering to both employers and apprentices.

We are able to provide a recruitment service for both employers and apprentices who are looking to gain new technical skills.

We offer the following apprenticeship standards:

- Customer Service Practitioner (Level 2)
- Customer Service Specialist (Level 3)
- Business Administrator (Level 3)
- Team Leader/Supervisor (Level 3)
- Operations/Departmental Manager (Level 5)
- Marketing Executive (Level 4)
- HR Support (Level 3)

We also offer the following Pre-Apprenticeship options:

- Level 2 Certificate in Business Administration
- Level 2 Certificate in Customer Service

The pre-apprenticeship opportunities are designed for individuals aged 16 to 18 (up to 25 with an EHCP) who aim to develop employability skills and gain practical work experience. It's important to note that participants can still claim universal credit while pursuing this program, with the ultimate goal of securing a full-time apprenticeship or employment after acquiring the necessary skills.

Delivery

Our curriculum delivery adopts a blended learning approach, incorporating both face-to-face and online instruction to accommodate the diverse needs of our learners. Your personalised program will include mandatory workshops conducted in groups of peers with similar objectives.

Additionally, you will receive one-on-one sessions with dedicated tutors, focusing on sector-specific content.

Depending on your requirements, you may also be required to attend functional skill workshops in Mathematics and English alongside your standard coursework.

General entry requirements:

At Next Level, we believe in inclusivity and providing equal opportunities for all. Therefore, we ensure there are no specific entry requirements for our programmes, valuing ambition and determination above all else

Open Events

For future events in 2025/26, please contact the team.

To reserve your spot, please email us at recruitment@nextlevel-training.co.uk

For any future open days:

Facebook: [@NextLevelTrainingApprenticeships](https://www.facebook.com/NextLevelTrainingApprenticeships)

X: [@NextLevel_15a](https://twitter.com/NextLevel_15a)

LinkedIn: [@next-level-apprenticeship](https://www.linkedin.com/company/next-level-apprenticeship)



On Site Bristol

Senior Leader Post-16: **Ian Moore**

SEN Lead: **Ian Moore**

Children in Care Lead: **Ian Moore**

Enquiries/Applications for Post-16 should be sent to: Applicants should apply online.

Email: onsitebristol@bristol.gov.uk

Website: www.onsitebristol.co.uk

Phone: 0117 352 1960

On Site Bristol have been supporting the construction industry in Bristol with their apprenticeship needs since 1996, working with employers of all sizes. We offer construction apprenticeship training programmes in 7 key 'On Site' trades

We offer Level 2 apprenticeships in Bricklaying, Bench Joinery, Carpentry, Plastering and Painting and Decorating, and Level 3 apprenticeship training in Electrical Installation and Plumbing/Gas Engineering. All our apprenticeships are industry approved to ensure students gain the knowledge, skills and behaviours needed to enjoy successful construction industry careers; many former On Site Bristol apprentices now hold senior positions in the industry including site management, production management and self-employment.

On Site Bristol can support candidates to find their placement either through our established relationships with employers or by offering information, advice and guidance sessions to candidates empowering them to search for an employer to provide an apprenticeship position.

Each of our apprentices are assigned a training officer who will offer guidance and support throughout the apprenticeship programme to ensure a positive and successful outcome for both student and employer.

General entry requirements:

All applicants are required to pass an online assessment and interview before being given a conditional offer. All offers are subject to applicants securing employment by the start of their course.

Open events:

Our open evening will be held in November 2025 and March 2026

Please check our website for updates



The Park Centre

Senior Leader Post-16: **David Naish**

Education Manager: **David Naish**

SEN Lead: **Louise Hunt**

Children in Care Lead: **Louise Hunt**

Enquiries/Applications for Post-16 should be sent to: **David Naish**

Email: dave.naish@theparkcentre.org.uk

Website: www.theparkcentre.org.uk/wp/

Phone: 0117 353 348

The Park Centre 16+ college is a welcoming and friendly environment that supports learners to develop their skills and confidence preparing them for their future. We are a unique education provision with intentionally small classes, where all learning is individualised.

Our Towards Independence courses are specifically for young people with special educational needs who may find transitioning to college challenging and would flourish in a smaller more supportive environment.

Our programme offers a flexible curriculum based on individual needs and EHCP outcomes, providing strong foundations for working life and independent living.

As part of their course, learners will have the opportunity to study:

- Pearson BTEC Entry level 1 in Pre-vocational Study
- Pearson BTEC Entry level 2 in Pre-vocational Study
- Pearson BTEC Entry level 3 in Pre-vocational Study
- Pearson Functional Skills English Entry 1 to Level 1

- Pearson Functional Skills Maths Entry 1 to Level 1

- Pre-entry English and Maths (RARPA)

The course focuses on Preparing for Adulthood Outcomes:

- Education and Employment
- Friends, Relationships and Community
- Independent Living
- Good Health

All learners will also be able to join in with a wide range of activities that will give them opportunities to:

- Access the community
- Travel training
- Enrichment activities such as animal care, sports, art, music
- Develop independent living skills e.g. Cooking, cleaning, money management
- Learn about healthy living and lifestyles
- Develop employability skills
- Access our gym and take part in a range of sports activities
- Art for Wellbeing sessions
- Work placements
- Make friends and manage social relationships

General entry requirements:

Each learner's needs and abilities to complete the course will be looked at on an individual basis and we strive to be as inclusive as possible.

Open events:

For further information about visits, please contact Education Manager, Dave Naish
dave.naish@theparkcentre.org.uk

Professional Apprenticeships

Senior Leader Post-16: **Lydia Thornton**

SEN Lead: **Lydia Thornton**

Children in Care Lead: **Lydia Thornton**

Enquiries/Applications for Post-16 should be sent to: **Lydia Thornton**

Email: info@pro-app.co.uk

Website: www.pro-app.co.uk

Phone: 0117 422 4000

At Professional Apprenticeships we pride ourselves on working with the best employers who want to invest in the talent of the future through hiring apprentices and offering genuine carer progression opportunities.

Those who apply to Professional Apprenticeships can expect the following support:

- CV guidance
- Advice and Guidance on different apprenticeship pathways
- Interview preparation
- Regular updates on suitable apprenticeship vacancies that match your skill set

We offer apprenticeships in:

- Multi-Channel Marketing – Advanced Level 3
- Content Creation – Advanced Level 3
- Event Assistant – Advanced Level 3
- Business Administration - Advanced Level 3
- Data – Advanced Level 3-Higher Level 4
- Software Development – Advanced Level 3-Higher Level 4
- DevOps – Higher Level 4
- Customer Service – Intermediate Level 2 – Advanced Level 3

- IT - Advanced Level 3
- Teaching Assistant – Level 3
- Hair - Advanced Level 3-Higher Level 4
- Assistant Project Manager – Higher Level 4
- Management - Advanced Level 3 – Higher Level 5

We offer a blended approach to how we deliver our apprenticeships, with our head office in Hengrove, Bristol where we have classroom facilities you can choose to come in face-to-face or online via Teams.

Depending on the apprenticeship you start, this will dictate how often you have a classroom/online led session. However, you can expect to see your tutor at least once a month.

Our apprenticeships operate all year round, meaning you don't have to wait until September to start!

We are an inclusive training provider and will support all learners to achieve.

General entry requirements:

GCSE's Maths and English at grade C/4 +. However, applications from those with grade D/3 will be considered where we can determine their current working level through completion of initial assessment.

Open events:

At Professional Apprenticeships we don't have fixed open days, we are reactive to the needs of both prospective apprentices and employers putting on face-to-face and online events such as:

CV workshops

How to find your own apprenticeship

Parent information sessions

Reflections Training Academy

Senior Leader Post-16: **Phil Davis**

SEN Lead: **Suzanne Sewell**

Children in Care Lead: **Suzanne Sewell**

Enquiries/Applications for Post-16 should be sent to: **Phil Davis**

Email: phil.davis@reflectionstraining.co.uk

Website: www.reflectionstraining.co.uk

Phone: 0117 922 1440

Reflections Training Academy Offers hands on apprenticeships and fulltime study programmes in Hairdressing and Barbering – a leading to nationally recognized qualifications. Based in the centre of Bristol, our modern training academy is a great place to learn, grow and get ready for a future in the hair industry.

Our tutors are experienced professionals who love what they do and are well-known in the industry. They're here to support you, share their skills, and help you become the best you can be.

We work closely with salons and barbershops across Bristol, Taunton, Bath and Gloucester, so you'll get valuable work experience and real job opportunities while you train.

If you are aged 16-19, we've got full-time Level 2 and Level 3 programmes that can help you kickstart your career. These 30-week courses focus on either Hairdressing or Barbering and include important subjects like Math's and English. You'll learn professional skills, gain confidence, and get real experience in the salon environment.

You'll also get personalised support throughout your course to help you stay on track and figure out your next steps – whether that's moving into an apprenticeship, finding a job, or continuing your studies.

We believe everyone deserves a chance, no matter their background. There are no minimum entry requirements – just bring your passion and a positive attitude, and we'll help you build a future in the world of hair.

Open events:

31 October 2025

20 February 2026

10 April 2026

29 May 2026

SWATPRO

Senior Leader Post-16: **Dee Vickers**

Enquiries/Applications for Post-16 should be sent to: **Stacy Harrell Phillips**

Email: info@swatpro.co.uk

Website: www.swatpro.org.uk

Phone: 0139 243 7659

Swatpro offers a full range of apprenticeships and traineeships within Bristol.

Please look on our website to see the latest offer: www.swatpro.org.uk

North Bristol NHS Trust

Senior Leader Post-16: **Angelo Moore**

Email: angelo.moore@nbt.nhs.uk

Phone: 0117 414 9237

North Bristol NHS Trust offer a wide range of post-16 learning & employment opportunities within clinical health and non-clinical occupations. Our apprenticeship offer includes: Healthcare, Business Administration & Customer Service.

Alternatively, you can share your details and career interests using the link below. A member of our team will be in touch when a relevant opportunity becomes available:

Apprenticeship Enquiries at North Bristol NHS Trust: shorturl.at/WNVmY

The Focus Training Group

Senior Leader Post-16: **Trevor Barnes**

SEN Lead: **Drew Tombs**

Children in Care Lead: **Drew Tombs**

Enquiries/Applications for Post-16 should be sent to: **Trevor Barnes**

Email: trevor.b@tftg.org

Website: www.thefocustraininggroup.com

Phone: 01454 614203

Our curriculum provision is broad across the Apprenticeship offering, we can deliver Electrical, Business Administration, Customer Service, AAT Accountancy, flexible, and responsive to the diverse needs of our learners. We work with individuals from a wide range of backgrounds and starting points, including those with special educational needs and/or disabilities (SEND). Our approach is learner-centred, with personalised learning plans and differentiated delivery that ensure each individual receives the support they need to succeed. Assessment is ongoing and tailored, allowing us to monitor progress effectively and adapt provision accordingly. We are committed to creating an inclusive learning environment where all learners are supported to achieve positive outcomes and progress into further training, employment, or independent living.

General entry requirements:

GCSE grade 4 or equivalent in English & Maths

Square Food Foundation

Senior Leader Post-16: **Charlotte Fife**

SEN Lead: **Charlotte Fife**

Children in Care Lead: **Charlotte Fife**
charlotte@squarefoodfoundation.co.uk

Enquiries/Applications for Post-16 should be sent to: **Lucy Dodd**

Email: lucy.dodd@squarefoodfoundation.co.uk

Website: www.squarefoodfoundation.co.uk/how-to-be-a-chef

Phone: 0117 462 2686

How to be a Chef is a free, accredited programme delivered by Square Food Foundation where young people work towards a Level 2 BTEC qualification, and we help them to find employment or opportunities for progression to further catering related learning at the end of the course.

We encourage young people with SEN to apply and are used to supporting them through this course. For all courses we accept up to 12 on a course, with 2 teachers and 2 or 3 kitchen assistants supporting.

The programme is an inspiring mix of practical cookery as well as workshops with top level chefs and visits to a mix of restaurants, factories, food manufacturers, coffee roasters, bakeries and breweries.

The last course covered:

Knife skills, pasta making, butchery, vegan/veggie cooking, baking, canapes, preserving and pickling, nutrition, food photography, visiting a farm, guest chefs, barista course, spice factory visit, tapas, Bristol food tour, fish cookery, CV writing, food hygiene and menu costing.

General entry requirements:

How to be a Chef – 16-24 years, interested in pursuing a career in the food industry. Interested in learning how to cook and about the industry. Entry focuses on your enthusiasm, motivation, and commitment rather than previous qualification/academic success.

www.squarefoodfoundation.co.uk/how-to-be-a-chef

Open events:

We will be holding open events over the summer. Individuals can register their interest online. We will then be in contact to have an informal chat and invite them in for a taster day before offering a place.

The course will run twice a year, in September and February.

It is a free 12-week course and runs 2 days a week 10am-4pm



United Hospital Bristol and Weston Trust

Senior Leader Post-16: **Tori Howells**

SEN Leads: **Tori Howells**

Children in Care Lead: **Tori Howells**

Enquiries/Applications for Post-16 should be sent to: **Hannah Thomas**

Contracts Manager

Email: apprenticeships@uhbw.nhs.uk

Website: www.uhbw.nhs.uk

Phone: 0117 34 20143

A clear element to us becoming an 'Employer of Choice' is to home grow our workforce of the future; Apprenticeships support us to do this. At UHBW NHS Foundation Trust we are committed to developing a talented and skilled workforce and actively promote training and development within the organisation. We are absolutely committed to supporting local people through apprenticeship qualifications, as we recognise the huge value that they bring to our organisation.

We see Apprenticeships as an opportunity to support local people of any age to begin and progress on their journey in the NHS, providing them with a career option they might otherwise not have had or have even considered.

We provide a range of apprenticeships to support a huge number of career opportunities in clinical and non-clinical support services with apprenticeships starting at level 2 through to level 7. The benefit of undertaking an Apprenticeship is you can earn whilst you learn, and have no training or tuition fees to pay. In addition, you will gain valuable experience in the workplace. The minimum duration of an apprenticeship is 12 months and varies in term of duration, depending on the qualification and the individuals existing prior learning and/or work experience.

We offer opportunities to develop your career in lots of different ways once you are an employee of the Trust as well as some apprenticeship opportunities to start your career with us. Apprenticeships and career pathways include:

- Business Administration
- Customer Service and Team Leading
- Pharmacy
- Leadership & Management & Coaching
- Registered Nursing Degree
- Healthcare Support and Senior Healthcare Support
- Project Management
- Healthcare Science routes
- Facilities Management
- Digital
- Engineering

General entry requirements:

Entry requirements will depend on the type and level of apprenticeship you are undertaking.

For example, you may need four or five GCSEs at grades 9-4/A-C or equivalent to do an Advanced Level Apprenticeship. To start a higher apprenticeship you're likely to need A-levels, equivalent level 3 qualifications or relevant and sufficient experience

Open events:

For details of all open events please check on our website.

Youth Education Service

Senior Leader Post-16: **Jenny Drake**

SEN Leads: **Jenny Drake/Dan Olu/Adele Moore**

Children in Care Lead: **Jenny Drake**

Enquiries/Applications for Post-16 should be sent to: yesenquiries@1625ip.co.uk

Website: www.youtheducationservice.org.uk

We offer English and Maths City and Guilds functional skills entry 3 up to level 2 for 16 – 25 year olds in small groups (of up to 8) for 2 hours a week at our classroom in Old Market, central Bristol.

Some 1:1 sessions are available depending on funding.

We are registered as an accredited exam provider for City and Guilds Functional Skill English and Maths.

Our tutors are qualified tutors have many years' experience of working with learners with special education needs, complex needs and/or trauma.

General entry requirements:

We generally work with learners who have not been able to have good outcomes in mainstream education. We would suggest dropping us an email to discuss if YES could help.

Open events:

We currently arrange welcome meetings that require a pre-booked appointment. Please contact us to arrange a welcome meeting



A Level Course	College or provider
Accounting	South Gloucestershire and Stroud College St Brendan's Sixth Form College
Art	Bristol Free School South Gloucestershire and Stroud College St Mary Redcliffe and Temple School Trinity Academy
Art (Fine Art)	Bristol Cathedral Choir School North Bristol Post-16 Centre St Bede's Catholic College The Olympus Academy Trust V6 Sixth Form
Art (Photography)	North Bristol Post-16 Centre The Olympus Academy Trust
Art & Design	Ashton Park Sixth Form Cabot Learning Federation Post-16 City of Bristol College Weston College
A&D - Fine Art	St Brendan's Sixth Form College
A&D - Graphic Design	Bristol Cathedral Choir School St Brendan's Sixth Form College
A&D - Photography	Ashton Park Sixth Form St Brendan's Sixth Form College Weston College
A&D - Textiles	Ashton Park Sixth Form St Brendan's Sixth Form College The Olympus Academy Trust Weston College
Biology	Ashton Park Sixth Form Bristol Cathedral Choir School Bristol Free School Cabot Learning Federation Post-16 City of Bristol College Greenhouse Learning North Bristol Post-16 Centre South Gloucestershire and Stroud College St Bede's Catholic College St Brendan's Sixth Form College St Mary Redcliffe and Temple School The Olympus Academy Trust Trinity Academy V6 Sixth Form Weston College

Courses Available - A-Levels

A Level Course	College or provider
Business Studies	Ashton Park Sixth Form Bristol Cathedral Choir School Cabot Learning Federation Post-16 City of Bristol College Greenhouse Learning North Bristol Post-16 Centre South Gloucestershire and Stroud College St Bede's Catholic College St Brendan's Sixth Form College St Mary Redcliffe and Temple School The Olympus Academy Trust V6 Sixth Form Weston College
Chemistry	Ashton Park Sixth Form Bristol Cathedral Choir School Bristol Free School Cabot Learning Federation Post-16 City of Bristol College Greenhouse Learning North Bristol Post-16 Centre South Gloucestershire and Stroud College St Bede's Catholic College St Brendan's Sixth Form College St Mary Redcliffe and Temple School The Olympus Academy Trust Trinity Academy V6 Sixth Form Weston College
Classical Civilisation	St Mary Redcliffe and Temple School The Olympus Academy Trust
Computer Science	Ashton Park Sixth Form Bristol Free School Cabot Learning Federation Post-16 City of Bristol College Greenhouse Learning North Bristol Post-16 Centre St Bede's Catholic College St Brendan's Sixth Form College St Mary Redcliffe and Temple School The Olympus Academy Trust V6 Sixth Form Weston College
Computing	Trinity Academy
Criminology BTEC	South Gloucestershire and Stroud College St Brendan's Sixth Form College The Olympus Academy Trust Weston College

A Level Course	College or provider
Dance	St Brendan's Sixth Form College Trinity Academy
Design Technology	North Bristol Post-16 Centre St Brendan's Sixth Form College V6 Sixth Form Weston College
D&T - Design Engineering	Bristol Free School St Brendan's Sixth Form College
D&T - Fashion	V6 Sixth Form
D&T - Product Design	Bristol Free School Cabot Learning Federation Post-16 St Brendan's Sixth Form College St Mary Redcliffe and Temple School The Olympus Academy Trust Trinity Academy
D&T - Textiles	St Mary Redcliffe and Temple School
Drama & Theatre Studies	Bristol Cathedral Choir School Bristol Free School Cabot Learning Federation Post-16 North Bristol Post-16 Centre St Bede's Catholic College St Brendan's Sixth Form College The Olympus Academy Trust Trinity Academy V6 Sixth Form
Economics	Bristol Cathedral Choir School Bristol Free School Cabot Learning Federation Post-16 Greenhouse Learning North Bristol Post-16 Centre South Gloucestershire and Stroud College St Bede's Catholic College St Brendan's Sixth Form College St Mary Redcliffe and Temple School The Olympus Academy Trust Weston College

Courses Available - A-Levels

A Level Course	College or provider
English Language	Bristol Cathedral Choir School Cabot Learning Federation Post-16 City of Bristol College Greenhouse Learning North Bristol Post-16 Centre South Gloucestershire and Stroud College St Bede's Catholic College St Brendan's Sixth Form College St Mary Redcliffe and Temple School The Olympus Academy Trust Trinity Academy V6 Sixth Form
English Language & Literature	Greenhouse Learning North Bristol Post-16 Centre St Brendan's Sixth Form College St Mary Redcliffe and Temple School Weston College
English Literature	Ashton Park Sixth Form Bristol Cathedral Choir School Bristol Free School Cabot Learning Federation Post-16 City of Bristol College Greenhouse Learning North Bristol Post-16 Centre South Gloucestershire and Stroud College St Bede's Catholic College St Brendan's Sixth Form College St Mary Redcliffe and Temple School The Olympus Academy Trust Trinity Academy V6 Sixth Form Weston College
Extended Project Qualification (EPQ)	Ashton Park Sixth Form Bristol Cathedral Choir School Bristol Free School Cabot Learning Federation Post-16 North Bristol Post-16 Centre South Gloucestershire and Stroud College St Bede's Catholic College St Brendan's Sixth Form College St Mary Redcliffe and Temple School The Olympus Academy Trust Trinity Academy Weston College V6 Sixth Form

A Level Course	College or provider
Film Studies	City of Bristol College Greenhouse Learning North Bristol Post-16 Centre South Gloucestershire and Stroud College St Brendan's Sixth Form College St Mary Redcliffe and Temple School The Olympus Academy Trust
Food Technology	The Olympus Academy Trust
Forensic & Criminal Investigation	South Gloucestershire and Stroud College
French	Ashton Park Sixth Form Bristol Cathedral Choir School Bristol Free School Greenhouse Learning North Bristol Post-16 Centre St Bede's Catholic College St Brendan's Sixth Form College St Mary Redcliffe and Temple School The Olympus Academy Trust Trinity Academy V6 Sixth Form Weston College
Geography	Ashton Park Sixth Form Bristol Cathedral Choir School Bristol Free School Cabot Learning Federation Post-16 City of Bristol College Greenhouse Learning North Bristol Post-16 Centre South Gloucestershire and Stroud College St Bede's Catholic College St Brendan's Sixth Form College St Mary Redcliffe and Temple School The Olympus Academy Trust Trinity Academy V6 Sixth Form Weston College
German	Bristol Cathedral Choir School Greenhouse Learning North Bristol Post-16 Centre St Mary Redcliffe and Temple School The Olympus Academy Trust

Courses Available - A-Levels

A Level Course	College or provider
Government & Politics	Bristol Cathedral Choir School North Bristol Post-16 Centre South Gloucestershire and Stroud College St Bede's Catholic College St Brendan's Sixth Form College Trinity Academy V6 Sixth Form Weston College
Health & Social Care	St Mary Redcliffe and Temple School V6 Sixth Form
History	Ashton Park Sixth Form Bristol Cathedral Choir School Bristol Free School Cabot Learning Federation Post-16 City of Bristol College Greenhouse Learning North Bristol Post-16 Centre South Gloucestershire and Stroud College St Bede's Catholic College St Brendan's Sixth Form College St Mary Redcliffe and Temple School The Olympus Academy Trust Trinity Academy V6 Sixth Form Weston College
History - Early Modern Europe	St Brendan's Sixth Form College
History - Europe	St Brendan's Sixth Form College
History - Modern World	St Brendan's Sixth Form College
History - Tudor	St Brendan's Sixth Form College
History - USA	St Brendan's Sixth Form College
Home Language	St Mary Redcliffe and Temple School V6 Sixth Form
IT Practitioners	Weston College
ICT	St Brendan's Sixth Form College
Law	City of Bristol College Greenhouse Learning South Gloucestershire and Stroud College St Brendan's Sixth Form College St Bede's Catholic College St Mary Redcliffe and Temple School The Olympus Academy Trust Weston College

A Level Course	College or provider
Applied Law	St Brendan's Sixth Form College
Statistics	Greenhouse Learning
Mathematics	Ashton Park Sixth Form Bristol Cathedral Choir School Bristol Free School Cabot Learning Federation Post-16 City of Bristol College Greenhouse Learning North Bristol Post-16 Centre South Gloucestershire and Stroud College St Bede's Catholic College St Brendan's Sixth Form College St Mary Redcliffe and Temple School The Olympus Academy Trust Trinity Academy V6 Sixth Form Weston College
Core Maths	Ashton Park Sixth Form Bristol Cathedral Choir School Bristol Free School Cabot Learning Federation Post-16 Greenhouse Learning North Bristol Post-16 Centre St Bede's Catholic College St Brendan's Sixth Form College St Mary Redcliffe and Temple School The Olympus Academy Trust V6 Sixth Form
Further Maths	Bristol Cathedral Choir School Bristol Free School Cabot Learning Federation Post-16 City of Bristol College Greenhouse Learning North Bristol Post-16 Centre South Gloucestershire and Stroud College St Bede's Catholic College St Brendan's Sixth Form College St Mary Redcliffe and Temple School The Olympus Academy Trust Trinity Academy V6 Sixth Form Weston College

Courses Available - A-Levels

A Level Course	College or provider
Media Studies	Ashton Park Sixth Form Cabot Learning Federation Post-16 City of Bristol College North Bristol Post-16 Centre South Gloucestershire and Stroud College St Brendan's Sixth Form College St Mary Redcliffe and Temple School Weston College
Music	Bristol Cathedral Choir School St Bede's Catholic College St Mary Redcliffe and Temple School Trinity Academy V6 Sixth Form
Music Technology	St Brendan's Sixth Form College St Mary Redcliffe and Temple School Trinity Academy
Philosophy	Ashton Park Sixth Form St Brendan's Sixth Form College St Mary Redcliffe and Temple School Trinity Academy
Photography	Ashton Park Sixth Form Bristol Free School Cabot Learning Federation Post-16 City of Bristol College South Gloucestershire and Stroud College St Brendan's Sixth Form College St Mary Redcliffe and Temple School Weston College
Physical Education	Bristol Free School South Gloucestershire and Stroud College St Bede's Catholic College St Mary Redcliffe and Temple School Trinity Academy V6 Sixth Form

A Level Course	College or provider
Physics	Ashton Park Sixth Form Bristol Cathedral Choir School Bristol Free School Cabot Learning Federation Post-16 City of Bristol College Greenhouse Learning North Bristol Post-16 Centre South Gloucestershire and Stroud College St Bede's Catholic College St Brendan's Sixth Form College St Mary Redcliffe and Temple School The Olympus Academy Trust Trinity Academy V6 Sixth Form Weston College
Politics	Bristol Free School Cabot Learning Federation Post-16 City of Bristol College South Gloucestershire and Stroud College St Brendan's Sixth Form College St Mary Redcliffe and Temple School
Psychology	Ashton Park Sixth Form Bristol Cathedral Choir School Bristol Free School Cabot Learning Federation Post-16 City of Bristol College Greenhouse Learning North Bristol Post-16 Centre South Gloucestershire and Stroud College St Bede's Catholic College St Brendan's Sixth Form College St Mary Redcliffe and Temple School The Olympus Academy Trust Trinity Academy V6 Sixth Form Weston College
Religious Studies	Bristol Cathedral Choir School Bristol Free School Cabot Learning Federation Post-16 Greenhouse Learning North Bristol Post-16 Centre St Bede's Catholic College St Brendan's Sixth Form College St Mary Redcliffe and Temple School South Gloucestershire and Stroud College The Olympus Academy Trust Trinity Academy V6 Sixth Form

Courses Available - A-Levels

A Level Course	College or provider
Science	Greenhouse Learning St Brendan's Sixth Form College Weston College
Science (Applied)	St Brendan's Sixth Form College
Sociology	Ashton Park Sixth Form Bristol Cathedral Choir School Bristol Free School Cabot Learning Federation Post-16 City of Bristol College North Bristol Post-16 Centre South Gloucestershire and Stroud College St Bede's Catholic College St Brendan's Sixth Form College St Mary Redcliffe and Temple School The Olympus Academy Trust Trinity Academy V6 Sixth Form Weston College
Spanish	Ashton Park Sixth Form Bristol Free School Greenhouse Learning North Bristol Post-16 Centre St Bede's Catholic College St Brendan's Sixth Form College St Mary Redcliffe and Temple School The Olympus Academy Trust Trinity Academy V6 Sixth Form
Sports Science	Bristol Cathedral Choir School Bristol Rovers Community College Weston College
Sports and Physical Education	St Brendan's Sixth Form College
Textiles	The Olympus Academy Trust Weston College
Textile Design	St Brendan's Sixth Form College
Theatre Studies	St Mary Redcliffe and Temple School

GCSES Course	College or provider
Art and Design	Knowle DGE
Biology	Bath College Cabot Learning Federation Post-16 Greenhouse Learning Knowle DGE South Gloucestershire and Stroud College St Brendan's Sixth Form College
Chemistry	South Gloucestershire and Stroud College
Core Science	Greenhouse Learning
English Functional Skills Entry L1	A2A (HWV) City of Bristol College Knowle DGE MPCT – Training Academies South Gloucestershire and Stroud College The Park Centre Weston College
English Functional Skills Entry L2	A2A (HWV) City of Bristol College Greenhouse Learning Knowle DGE MPCT – Training Academies South Gloucestershire and Stroud College The Park Centre Weston College
English Functional Skills Entry L3	A2A (HWV) Bath College City of Bristol College Greenhouse Learning Knowle DGE MPCT – Training Academies Reflections Training Academy South Gloucestershire and Stroud College The Park Centre Weston College Youth Education Service
English Functional Skills L1	A2A (HWV) Bath College Cabot Learning Federation Post-16 City of Bristol College Greenhouse Learning Kingsweston School Knowle DGE MPCT – Training Academies Reflections Training Academy South Gloucestershire and Stroud College The Park Centre Weston College Youth Education Service

Courses Available - GCSEs

GCSES Course	College or provider
English Functional Skills L2	A2A (HWV) Bath College Cabot Learning Federation Post-16 City of Bristol College Greenhouse Learning Kingsweston School Knowle DGE Reflections Training Academy South Gloucestershire and Stroud College The Park Centre Weston College Youth Education Service
English Language GCSE	A2A (HWV) Greenhouse Learning Knowle DGE South Gloucestershire and Stroud College Weston College
English Language (IGCSE)	A2A (HWV) City of Bristol College Greenhouse Learning MPCT – Training Academies
English for Speakers of Other Languages (ESOL)	City of Bristol College Cabot Learning Federation Post-16 Greenhouse Learning
English GCSE Language (Resit) limited start dates - check with provider	A2A (HWV) Access Creative College Ashton Park Sixth Form Bath College Bristol Free School Cabot Learning Federation Post-16 City of Bristol College Greenhouse Learning Knowle DGE North Bristol Post-16 Centre South Gloucestershire and Stroud College St Bede's Catholic College St Brendan's Sixth Form College The Olympus Academy Trust The Park Centre Trinity Academy V6 Sixth Form
English Literature	Bath College Greenhouse Learning Knowle DGE South Gloucestershire and Stroud College
Film	South Gloucestershire and Stroud College
French	Greenhouse Learning

GCSES Course	College or provider
Geography	Greenhouse Learning Knowle DGE
Maths Functional Skills Entry L1	A2A (HWV) Greenhouse Learning Knowle DGE MPCT – Training Academies South Gloucestershire and Stroud College The Park Centre Weston College
Maths Functional Skill Entry L2	A2A (HWV) Greenhouse Learning Knowle DGE MPCT – Training Academies South Gloucestershire and Stroud College The Park Centre Weston College
Maths Functional Skills Entry L3	A2A (HWV) Greenhouse Learning Knowle DGE MPCT – Training Academies Reflections Training Academy South Gloucestershire and Stroud College The Park Centre Weston College Youth Education Service
Maths Functional Skills L1	A2A (HWV) Bath College Cabot Learning Federation Post-16 City of Bristol College Greenhouse Learning Knowle DGE MPCT – Training Academies Reflections Training Academy South Gloucestershire and Stroud College The Park Centre Weston College Youth Education Service
Maths Functional Skills L2	Bath College Ashton Park Sixth Form Cabot Learning Federation Post-16 City of Bristol College Greenhouse Learning Knowle DGE Reflections Training Academy South Gloucestershire and Stroud College The Park Centre Weston College Youth Education Service

Courses Available - GCSEs

GCSES Course	College or provider
Maths GCSE (Resit) limited start dates - check with provider	A2A (HWV) Bath College Ashton Park Sixth Form Access Creative College Bristol Free School Cabot Learning Federation Post-16 City of Bristol College Greenhouse Learning Knowle DGE North Bristol Post-16 Centre South Gloucestershire and Stroud College St Bede's Catholic College St Brendan's Sixth Form College St Mary Redcliffe and Temple School The Olympus Academy Trust The Park Centre Trinity Academy V6 Sixth Form
Mathematics	Access Creative College Greenhouse Learning Knowle DGE MPCT – Training Academies South Gloucestershire and Stroud College Weston College
Physics	South Gloucestershire and Stroud College
Psychology	Greenhouse Learning South Gloucestershire and Stroud College
Additional Science	Knowle DGE
Core Science	Knowle DGE South Gloucestershire and Stroud College
Science Trilogy	Greenhouse Learning
Sociology	Greenhouse Learning South Gloucestershire and Stroud College St Brendan's Sixth Form College
Spanish	Greenhouse Learning Knowle DGE

T Levels Course	College or provider
Accounting	Weston College
Animal Care	South Gloucestershire and Stroud College
Assisting Teaching	Weston College
Beauty Therapies	Weston College
Building Services	Weston College
Business and Administration	Bath College South Gloucestershire and Stroud College Weston College
Construction: Design, Surveying and Planning	City of Bristol College Weston College
Construction: Building Services	Weston College
Construction: Onsite	Weston College
Digital: Digital Production, Design and Development	Bath College City of Bristol College South Gloucestershire and Stroud College Weston College
Digital: Support Services	Weston College
Design, Surveying and Planning	Weston College
Early Years and Education: Transition Early Years Practitioner	Bath College South Gloucestershire and Stroud College
Education and Childcare	City of Bristol College South Gloucestershire and Stroud College
Education: Early Years Education and Childcare	Bath College Weston College
Education and Early Years	Cabot Learning Federation Post-16
Engineering and Manufacturing	Bath College Weston College
Engineering and Mechanics: Transition Engineering	Bath College
Fashion	Weston College
Hairdressing	Weston College
Health	Bath College South Gloucestershire and Stroud College
Health: Healthcare Science	Weston College

Courses Available - T-Levels

T Levels Course	College or provider
Health: Supporting Health Care	Weston College
Leadership & Management	Weston College
Legal Services	Weston College
Media	Weston College
Network Infrastructure & Cyber Security L3	Access Creative College
Software Development	Access Creative College

Apprenticeship Course	College or provider
Accounting L2	South Gloucestershire and Stroud College The Focus Training Group United Hospitals Bristol and Weston NHS Foundation Trust Weston College
Accounts or Finance Assistant L2	Bath College City of Bristol College South Gloucestershire and Stroud College
Accounting L3	South Gloucestershire and Stroud College The Focus Training Group United Hospitals Bristol and Weston NHS Foundation Trust Weston College
Administration Assistant L2	Bath College
Adult Care Worker L2	Bath College City of Bristol College Lifetime Training Group United Hospitals Bristol and Weston NHS Foundation Trust Weston College
Advanced and Creative Hair Professional L3 (Barbering)	Bath College
Advanced and Creative Hair Professional L3 (Hairdressing)	Bath College
Autocare Technician L2	Bath College
Advanced Carpentry and Joinery L3	Bath College South Gloucestershire and Stroud College
Advanced Site Carpenter L3 Apprenticeship New Standards	City of Bristol College
Aeronautical Engineering	Weston College
Animal Care and Welfare L2	Weston College
Associate Project Manager	South Gloucestershire and Stroud College
Assistant Accounting L3	Bath College City of Bristol College South Gloucestershire and Stroud College
Automotive Engineering L2	Bath College
Barbering	City of Bristol College Weston College
Beauty Therapy	Bath College Weston College
Beauty L2	City of Bristol College
Bench Joinery L2	City of Bristol College On Site Bristol

Courses Available - Apprenticeship

Apprenticeship Course	College or provider
Brickwork L2	City of Bristol College Greenlight Training On Site Bristol South Gloucestershire and Stroud College Weston College
Bricklayer	City of Bristol College Bath College South Gloucestershire and Stroud College
Building Surveying	United Hospitals Bristol and Weston NHS Foundation Trust
Building Services Engineer Service and Maintenance Technician L3	Bath College
Building Services Engineering Technician L3	Bath College
Building Maintenance	United Hospitals Bristol and Weston NHS Foundation Trust
Business Administration L2	Lifetime Training Group Next Level Training South Gloucestershire and Stroud College The Focus Training Group United Hospitals Bristol and Weston NHS Foundation Trust Weston College
Business Administration L3	Access Creative College Bath College City of Bristol College Lifetime Training Group Next Level Training Professional Apprenticeships South Gloucestershire and Stroud College United Hospitals Bristol and Weston NHS Foundation Trust Weston College
Carpentry	Greenlight Training On Site Bristol South Gloucestershire and Stroud College United Hospitals Bristol and Weston NHS Foundation Trust Weston College
Carpentry & Joinery L2	South Gloucestershire and Stroud College
Carpentry & Joinery (Site & Architectural) L2	Bath College City of Bristol College
Catering	United Hospitals Bristol and Weston NHS Foundation Trust Weston College
Chef de Partie L3	Bath College

Apprenticeship Course	College or provider
Childcare	Lifetime Training Group South Gloucestershire and Stroud College The Focus Training Group Weston College
Civil Engineering Technician L3	Bath College Weston College
Commis Chef L2	Bath College
Composite Engineering	United Hospitals Bristol and Weston NHS Foundation Trust
Construction	City of Bristol College The Focus Training Group United Hospitals Bristol and Weston NHS Foundation Trust Weston College
Construction Support Technician L3	Bath College South Gloucestershire and Stroud College
Content Creator	Access Creative College Professional Apprenticeships
Craft Bricklayer L3	City of Bristol College
Craft Carpentry and Joinery L3	Bath College
Creative Venue Technician	Access Creative College
Cultural Learning & Participation Officer	Access Creative College
Customer Service L2	Bath College City of Bristol College Lifetime Training Group Next Level Training Professional Apprenticeships South Gloucestershire and Stroud College The Focus Training Group United Hospitals Bristol and Weston NHS Foundation Trust Weston College
Customer Service L3	Bath College Lifetime Training Group Next Level Training Professional Apprenticeships South Gloucestershire and Stroud College United Hospitals Bristol and Weston NHS Foundation Trust Weston College
Customer Service Practitioner L2	Access Creative College South Gloucestershire and Stroud College
Cyber Security Technician L3	Bath College
Data	Professional Apprenticeships
Digital Marketing L2	Lifetime Training Group The Focus Training Group United Hospitals Bristol and Weston NHS Foundation Trust

Courses Available - Apprenticeship

Apprenticeship Course	College or provider
Digital Marketing L3	Access Creative College Bath College Professional Apprenticeships South Gloucestershire and Stroud College
Digital Support Technician L3	City of Bristol College
Early Years Educator L3	Bath College City of Bristol College South Gloucestershire and Stroud College Weston College
Early Years Practitioner L2	Bath College City of Bristol College South Gloucestershire and Stroud College Weston College
Early Years Practitioner L3	Bath College Weston College
Educational/Industrial Science	United Hospitals Bristol and Weston NHS Foundation Trust Weston College
Electronic & Electrical Engineering	The Focus Training Group United Hospitals Bristol and Weston NHS Foundation Trust
Electrotechnical Services L3	City of Bristol College The Focus Training Group United Hospitals Bristol and Weston NHS Foundation Trust
Electrical	South Gloucestershire and Stroud College The Focus Training Group United Hospitals Bristol and Weston NHS Foundation Trust
Electrical Installation	On Site Bristol South Gloucestershire and Stroud College The Focus Training Group United Hospitals Bristol and Weston NHS Foundation Trust Weston College
Engineering Manufacturing (fitting)	City of Bristol College
Engineering and Manufacturing Support Technician L3	Bath College
Engineering Operative (engineering manufacture) L2	Bath College City of Bristol College
Engineering Operative (maintenance and installation) L2	City of Bristol College
Engineering (Mechanical)	BEMA United Hospitals Bristol and Weston NHS Foundation Trust
Gas Engineering Operative L3	South Gloucestershire and Stroud College

Apprenticeship Course	College or provider
Engineering Technician L3 (Machinist, Product Design and Development or Technical Support)	Bath College
Engineering	BEMA United Hospitals Bristol and Weston NHS Foundation Trust Weston College
Engineering Maintenance	BEMA United Hospitals Bristol and Weston NHS Foundation Trust Weston College
Event Assistant	Professional Apprenticeships
Fabrication & Welding	United Hospitals Bristol and Weston NHS Foundation Trust
Facilities Management Supervisor L3	South Gloucestershire and Stroud College
Facilities Operative L2	South Gloucestershire and Stroud College
Fencing Installer	South Gloucestershire and Stroud College
Fitted Interiors Installer L2	City of Bristol College
Fire, Emergency and Security Systems L3	South Gloucestershire and Stroud College
Financial Services L3	United Hospitals Bristol and Weston NHS Foundation Trust Weston College
General Welder (Arc Processes) L2	Bath College
Gas Engineering Operative L3	South Gloucestershire and Stroud College
Ground Worker L2	Greenlight Training Weston College
Hair Professional L2 (Barbering or Hairdressing)	Bath College City of Bristol College
Hairdressing and Barbering	City of Bristol College Professional Apprenticeships Reflections Training Academy Weston College
Health & Social Care	City of Bristol College Lifetime Training Group The Focus Training Group United Hospitals Bristol and Weston NHS Foundation Trust Weston College
Heavy Vehicle Service and Maintenance Technician L3	City of Bristol College
Hospitality Supervisor L3	Bath College
Hospitality Team Member L2	Bath College City of Bristol College

Courses Available - Apprenticeship

Apprenticeship Course	College or provider
HR Support L3	Bath College City of Bristol College Next Level Training South Gloucestershire and Stroud College Weston College
HR Consultant/Partner	South Gloucestershire and Stroud College
Hospitality L2	City of Bristol College Discovery Education Centre Lifetime Training Group United Hospitals Bristol and Weston NHS Foundation Trust Weston College
Hospitality L3	Lifetime Training Group United Hospitals Bristol and Weston NHS Foundation Trust
IT	Lifetime Training Group Professional Apprenticeships South Gloucestershire and Stroud College United Hospitals Bristol and Weston NHS Foundation Trust
IT Solutions Technician L3	Bath College
Infrastructure Technician L3	Weston College
Information Communication Technician Level 3	South Gloucestershire and Stroud College
Installation and Commissioning	United Hospitals Bristol and Weston NHS Foundation Trust
Installation Electrician and Maintenance Electrician L3	Bath College City of Bristol College South Gloucestershire and Stroud College
Interior Systems Installer L2	Greenlight Training
	South Gloucestershire and Stroud College
Improving Operational Performance	United Hospitals Bristol and Weston NHS Foundation Trust
Laboratory Technician Standard L3	Weston College
Law/Paralegal	United Hospitals Bristol and Weston NHS Foundation Trust Weston College
Lead Adult Care Worker L3	Bath College City of Bristol College
Learning Mentor L3	Weston College
Learning in Schools	Weston College
Lifting Equipment Technician app standard	City of Bristol College

Apprenticeship Course	College or provider
Light Vehicle Service and Maintenance L3	City of Bristol College
Live Event Technician	Access Creative College
Logistics L2 & L3	United Hospitals Bristol and Weston NHS Foundation Trust
Machining Technician L3	Bath College
Maintenance Electrician L3	Bath College
Maintenance and Operations Eng Tech Mechanical L3	City of Bristol College United Hospitals Bristol and Weston NHS Foundation Trust
Maintenance & Operations. Eng. Tech. (Mechanical Maintenance) L3 App Standard	City of Bristol College
Management	South Gloucestershire and Stroud College The Focus Training Group United Hospitals Bristol and Weston NHS Foundation Trust
Management L3	Lifetime Training Group Next Level Training Professional Apprenticeships
Mechanical Manufacturing	BEMA
Marketing	Next Level Training Professional Apprenticeships The Focus Training Group United Hospitals Bristol and Weston NHS Foundation Trust Weston College
Mechatronics Maintenance Technician L3	Bath College
Metal Fabricator L3	Bath College
Motor Vehicle	Weston College
Motor Vehicle Service and Maintenance Technician (Light Vehicle L2)	Bath College
Motor Vehicle Service and Maintenance L3	Bath College
Multi-channel marketing L3	Next Level Training
Operational Fire Fighter	Weston College
Painting & Decorating	On Site Bristol South Gloucestershire and Stroud College
Pipe Welder L3	Bath College
Plate Welder L3	Bath College
Plastering L2	City of Bristol College Greenlight Training On Site Bristol South Gloucestershire and Stroud College United Hospitals Bristol and Weston NHS Foundation Trust

Courses Available - Apprenticeship

Apprenticeship Course	College or provider
Plumbing L2	On Site Bristol The Focus Training Group United Hospitals Bristol and Weston NHS Foundation Trust Weston College
Plumbing and Domestic Heating Technician L3	Bath College City of Bristol College South Gloucestershire and Stroud College
Procurement and Supply Assistant L3	South Gloucestershire and Stroud College
Production Chef L2	City of Bristol College
Production Chef L3	Bath College
Property/Estate L3	United Hospitals Bristol and Weston NHS Foundation Trust Weston College
Property Maintenance L2	Bath College City of Bristol College Greenlight Training South Gloucestershire and Stroud College
Procurement and Supply Assistant L3	South Gloucestershire and Stroud College
Recruitment Resourcer L2	Weston College
Refrigeration Air Conditioning and Heat Pump Engineering Technician L3 (Air Conditioning)	Bath College
Retail L2	Lifetime Training Group United Hospitals Bristol and Weston NHS Foundation Trust Weston College
Roofer L2	Greenlight Training South Gloucestershire and Stroud College
Scaffolder L2	Weston College
Safeguarding Support	Professional Apprenticeships
Sales & Marketing	Lifetime Training Group The Focus Training Group United Hospitals Bristol and Weston NHS Foundation Trust Weston College
Security Systems & Servicing	United Hospitals Bristol and Weston NHS Foundation Trust
Senior Healthcare Support Worker L3	Bath College
Senior Production Chef L3	Bath College
Site Carpentry and Joinery L2	City of Bristol College
Software Developer L3	Professional Apprenticeships
Software Development Technician L3	Access Creative College

Apprenticeship Course	College or provider
Sport	Lifetime Training Group Weston College
Sports Coaching L2 Intermediate Apprenticeship in Activity	Lifetime Training Group South Gloucestershire and Stroud College
Stonemasonry (Banker) Standard L2	Bath College
Structural Steelwork Fabricator L2	Bath College
Supply Chain Management L2 and L3	Lifetime Training Group United Hospitals Bristol and Weston NHS Foundation Trust
Supported Teaching & Learning in Schools	Lifetime Training Group United Hospitals Bristol and Weston NHS Foundation Trust Weston College
Surveying	United Hospitals Bristol and Weston NHS Foundation Trust
Teaching Assistant L3	City of Bristol College Lifetime Training Group Professional Apprenticeships South Gloucestershire and Stroud College Weston College
Team Leading L2	South Gloucestershire and Stroud College The Focus Training Group United Hospitals Bristol and Weston NHS Foundation Trust Weston College
Team Leading L3	City of Bristol College Lifetime Training Group Next Level Training Professional Apprenticeships South Gloucestershire and Stroud College United Hospitals Bristol and Weston NHS Foundation Trust Weston College
Team Leader/Supervisor (Level 3)	Bath College City of Bristol College Next Level Training South Gloucestershire and Stroud College
Telesales	United Hospitals Bristol and Weston NHS Foundation Trust
Trowel Occupations	Weston College
Veterinary Nurse L3	Bath College
Wall & Floor Tiling	South Gloucestershire and Stroud College
Warehousing & Storage L2	Lifetime Training Group United Hospitals Bristol and Weston NHS Foundation Trust
Warehousing & Storage L3	Lifetime Training Group United Hospitals Bristol and Weston NHS Foundation Trust
Wellbeing & Holistic Therapist L3	Bath College
Youth Work	Weston College

Courses Available - Pre-Apprenticeship and Internship

Pre-Apprenticeship Course	College or provider
Business Administration – Study Programme	Next Level Training
Challenge Programme (3-6 Months)	Babbasa
Construction Trades	Bath College
Customer Service – Level 2 Certificate Study Programme	Next Level Training
Digital Marketing Business Study Programme	Next Level Training
Pre-apprenticeship – Hairdressing and Barbering	Reflections Training Academy
Principles of On-line & Off-line Marketing	Next Level Training
Mentoring, Enterprise & Support Programmes	Babbasa
Occupational Traineeship - Painting and Decorating, Carpentry and Bricklaying	Bath College
Admin and IT	South Gloucestershire and Stroud College
Education – Teaching Assistants	South Gloucestershire and Stroud College
Customer Service	South Gloucestershire and Stroud College
IT	South Gloucestershire and Stroud College
Construction	South Gloucestershire and Stroud College

Internship	College or provider
Placements/Recruitment Programme	Babbasa
Work Experience/T Level Placements / Project Search / SWAP's and Skills Bootcamps	United Hospitals Bristol and Weston NHS Foundation Trust

Courses Available - Specialist and Vocational

Specialist and Vocational courses	College or provider
Animal Care	
Animal Care L1, L2 BTEC Diploma, L3 BTEC Diploma	Knowle DGE South Gloucestershire and Stroud College Weston College
Animal Care BTEC L1, L2, City and Guilds, Diploma, L3 City and Guilds diploma	Bath College City of Bristol College South Gloucestershire and Stroud College
Animal Care Entry 3	City of Bristol College
Animal Management BTEC Extended Diploma L3	South Gloucestershire and Stroud College Weston College
Animal Management City and Guilds extended Diploma L3	Bath College City of Bristol College
Veterinary Care Support L2	Bath College
Applied Science	
Applied Science BTEC Diploma at L2 or L3	City of Bristol College
Applied Science L3 Extended Certificate	Cabot Learning Federation Post-16 V6 Sixth Form
Applied Science (Applied Biology) L3 BTEC Subsidiary Diploma	City of Bristol College
Applied Science (Medical Science) L3 BTEC Extended or Subsidiary Diploma	City of Bristol College
Applied Science (Medical Science) L3 BTEC 90 Credit Diploma	City of Bristol College
Applied Science (Forensic Science) L3 BTEC 90 Credit Diploma	City of Bristol College
Applied Science (Forensic) L3 BTEC Extended Diploma	City of Bristol College
Applied Science BTEC L3 Certificate/ Extended Certificate	North Bristol Post-16 Centre The Olympus Academy Trust
Applied Science L2 BTEC 1st	North Bristol Post-16 Centre
Application of Science L2 BTEC 1st	North Bristol Post-16 Centre
Applied Psychology L3	Bath College
Biomedical Science L3	City of Bristol College

Courses Available - Specialist and Vocational

Specialist and Vocational courses	College or provider
Criminology and Law (Public Services) L2	Bath College
Criminology L3	Bath College
Forensic and Criminal Investigation L3	Bath College
Forensic Science L3	City of Bristol College
Understanding Climate Change and Environmental Awareness	City of Bristol College
Alternative Academic Qualification Cambridge Advanced National in Human Biology (Extended Certificate)	St Brendan's Sixth Form College
Applied Science L3 Cambridge Advanced National - Certificate	Cabot Learning Federation Post-16
Applied Science L3 Cambridge Advanced National - Extended Certificate	Cabot Learning Federation Post-16
Art and Design	
Art & Design Diploma L1 to L4	Bath College City of Bristol College South Gloucestershire and Stroud College
Art & Design L1 & L2	Bath College City of Bristol College Knowle DGE Weston College
Art & Design L3	Bath College City of Bristol College Knowle DGE Weston College
Art and Design L3 OCR Cambridge Technical Diploma Introductory Diploma/ Subsidiary Diploma/ Extended Diploma	Digitech Studio School Bristol
Art & Design: General Art & Design UAL Extended Diploma L3	Knowle DGE South Gloucestershire and Stroud College Weston College
Art & Design: Animation & Game UAL Extended Diploma L3	Knowle DGE South Gloucestershire and Stroud College Weston College
Art & Design Foundation Diploma L3 & L4	South Gloucestershire and Stroud College Weston College

Courses Available - Specialist and Vocational

Specialist and Vocational courses	College or provider
Art & Design: Photography L3 Diploma/Extended	Bath College City of Bristol College Knowle DGE Weston College
Art & Design: Product Design UAL Extended Diploma L3	South Gloucestershire and Stroud College
Art and Design UAL L2 Diploma	City of Bristol College
Art, Design & Media UAL Diploma L1	Bath College South Gloucestershire and Stroud College Weston College
Art, Design & Media UAL Diploma L2	South Gloucestershire and Stroud College Weston College
Digital Design Level 2 UAL	City of Bristol College
Fashion Business & Retail L2	Bath College
Fashion and Textiles L2 & L3	City of Bristol College
Fashion and Textiles L3 Diploma & Extended	Bath College
Fashion Design UAL Extended Diploma	Weston College
Fashion Design and Production L3 BTEC Diploma/ Extended Diploma	City of Bristol College
Fashion Business and Retail L2	Bath College
Graphics & Illustration L3 BTEC Diploma/Extended	City of Bristol College
Graphic design fundamentals Level 2	City of Bristol College
Graphic Design Diploma/ Extended Diploma L3	Bath College City of Bristol College Weston College
Photography L3	City of Bristol College
Film Studies	City of Bristol College
Beauty Therapy & Hairdressing	
Barbering LC&G Level 1 & 2 Certificate	City of Bristol College
Barbering C&G Level 2 Certificate	City of Bristol College
Barbering VRQ Diploma L1/ L2	South Gloucestershire and Stroud College Weston College
Barbering L3 NVQ	Reflections Training Academy

Courses Available - Specialist and Vocational

Specialist and Vocational courses	College or provider
Beauty Therapy C&G Level 2 Certificate	City of Bristol College
Beauty Therapy Techniques C&G L3 Diploma	City of Bristol College
Beauty Therapy Technical Qualification L2	Weston College South Gloucestershire and Stroud College
Beauty Therapy VRQ Diploma L1, L2, L3	City of Bristol College South Gloucestershire and Stroud College
Complimentary Therapies L3	Bath College
Hair & Beauty Entry 3	City of Bristol College
Hair and Beauty Edexcel L1 Certificate	City of Bristol College
Hairdressing L1 Diploma	South Gloucestershire and Stroud College
Hairdressing L2 NVQ or L3 NVQ	Bath College Reflections Training Academy
Hairdressing VRQ L2 / Barbering VRQ L2	Reflections Training Academy
Hairdressing VRQ cert/ Diploma L1, L2	South Gloucestershire and Stroud College Weston College
Hairdressing and Beauty Therapy C&G Level 1 Certificate	City of Bristol College
Hair & Beauty (Introduction to Sector)	Bath College South Gloucestershire and Stroud College
Hair and Beauty vocational studies L1	City of Bristol College Weston College
Hair and Beauty VRQ Diploma L1	Reflections Training Academy Weston College
Hair and Media Make up Cert L1	City of Bristol College
Hair and Media Make-Up VRQ Diploma L2	South Gloucestershire and Stroud College Weston College
Hair and Media Make up L1	City of Bristol College
Hair and Beauty Skills Extended Certificate Entry Level	Weston College
Hair & Media Technical Qualification L3	Weston College
Make Up and Hair Level 1	City of Bristol College
Massage Therapy (Holistics) Technical Qualification L3	Weston College

Courses Available - Specialist and Vocational

Specialist and Vocational courses	College or provider
Media Make-up and Hair Artistry C&G L2 Diploma	City of Bristol College
Production & Theatrical Arts Makeup L3	Bath College
Spa & Beauty Therapy Extended Diploma L3	Bath College
Women's Hairdressing VRQ Certificate L2	City of Bristol College Reflections Training Academy
Women's Hairdressing VRQ or C&G Diploma L3	City of Bristol College South Gloucestershire and Stroud College
Women's Hairdressing Technical Qualification L2/ L3	City of Bristol College Weston College South Gloucestershire and Stroud College
Business, Finance and Law	
Accounting & Business Diploma L2/L3 AAT L3/L4	City of Bristol College
Accounting AAT Foundation Certificate	South Gloucestershire and Stroud College
Accounting AAT Advanced Diploma	South Gloucestershire and Stroud College
Applied Law L3 BTEC	St Brendan's Sixth Form College
Business Admin L2/L3	City of Bristol College
Business Admin L2	North Bristol Post-16 Centre
Business L1 Award or L1 Certificate	South Gloucestershire and Stroud College Weston College
Business L3 BTEC Cert/ Diploma / Extended	St Brendan's Sixth Form College Weston College
Business L2 BTEC Certificate/ Diploma	South Gloucestershire and Stroud College St Brendan's Sixth Form College
Business L2 BTEC Extended Certificate	Cabot Learning Federation Post-16 South Gloucestershire and Stroud College Weston College
Business L3 BTEC Cert/ Diploma or Extended Diploma	City of Bristol College South Gloucestershire and Stroud College Weston College
Business L3 OCR Cambridge Technical certificate, extended certificate or Diploma	Cabot Learning Federation Post-16 St Brendan's Sixth Form College The Olympus Academy Trust

Courses Available - Specialist and Vocational

Specialist and Vocational courses	College or provider
Business L3 OCR Cambridge Technical Diploma Introductory diploma/ subsidiary diploma	Cabot Learning Federation Post-16 St Brendan's Sixth Form College
Business L3 BTEC Certificate	Cabot Learning Federation Post-16 South Gloucestershire and Stroud College
Business L3 BTEC Extended Certificate	Bristol Free School Cabot Learning Federation Post-16 North Bristol Post-16 Centre St Brendan's Sixth Form College
BTEC Extended Certificate in Marketing Level 3	Bath College
Criminology WJEC L3 Applied Certificate / Diploma	Cabot Learning Federation Post-16
CILex Diploma Law and Legal Skills L2	Weston College
Finance and Accounting AAT L2	Weston College
Introduction to Business and Digital L1	Bath College
Skills for Business Entry 3	City of Bristol College
Business L1 BTEC Diploma	South Gloucestershire and Stroud College
Construction	
Bench Joinery L2	City of Bristol College
Bench Joinery L3	City of Bristol College
Bricklaying L1	City of Bristol College Bath College South Gloucestershire and Stroud College Weston College
Bricklaying L2	City of Bristol College South Gloucestershire and Stroud College Weston College
Brickwork Construction L3	Weston College
Carpentry & Joinery L1	Bath College City of Bristol College
Carpentry L1	Bath College Discovery Education Centre Knowle DGE South Gloucestershire and Stroud College Weston College

Courses Available - Specialist and Vocational

Specialist and Vocational courses	College or provider
Carpentry L2 - Site	City of Bristol College South Gloucestershire and Stroud College Weston College
Carpentry L3 - Site	Weston College
Construction & Construction Skills Entry L3	City of Bristol College Bath College
Construction Multi-Skills L1	City of Bristol College Discovery Education Centre Knowle DGE South Gloucestershire and Stroud College Weston College
Construction Maintenance L1 or L2	Knowle DGE South Gloucestershire and Stroud College
Construction Operations (Groundworks) L2	Knowle DGE Weston College
Maintenance Operations L2	City of Bristol College Weston College
Painting and Decorating L1	South Gloucestershire and Stroud College
Painting and Decorating L2	City of Bristol College South Gloucestershire and Stroud College
Plastering L1	City of Bristol College South Gloucestershire and Stroud College Weston College
Plastering L2	City of Bristol College South Gloucestershire and Stroud College Weston College
Plumbing Level 1 (Introduction to Plumbing)	City of Bristol College Bath College
Plumbing Studies L2	Bath College
Plumbing at L1, L2 or L3	City of Bristol College South Gloucestershire and Stroud College Weston College
Stonemasonry L2 & L3	Bath College
Engineering	
Aircraft Maintenance Engineering L2	City of Bristol College
Auto Electrical and Mobile Electrical Principals L2	Bath College
Introduction to Automotive Maintenance and Repair L3	Bath College

Courses Available - Specialist and Vocational

Specialist and Vocational courses	College or provider
Civil Engineering BTEC L2	Weston College
Engineering at L2	BEMA The Olympus Academy Trust City of Bristol College Weston College
Engineering L3	BEMA City of Bristol College The Olympus Academy Trust Weston College
Engineering Technologies Certificate L3	BEMA Weston College
Engineering & Technology L2	BEMA City of Bristol College Weston College
Engineering BTEC Foundation Diploma L3 (Yr1)	Cabot Learning Federation Post-16 City of Bristol College Weston College
Engineering BTEC Extended Diploma L3 (Yr2)	Cabot Learning Federation Post-16 City of Bristol College Weston College
Engineering L3 OCR Cambridge Technical Certificate & Extended	Cabot Learning Federation Post-16
Electrical L2 or L3	City of Bristol College Weston College
Electrical Installation Diploma at L1 L2 L3	City of Bristol College Weston College
Electrical Installation L1	Bath College City of Bristol College
Electrical Installation L2	Bath College City of Bristol College
Electrical Installation EAL L3 Diploma	City of Bristol College
Engineering & Technology EAL Diploma L2	BEMA City of Bristol College Weston College
Engineering L3 BTEC Diploma, Foundation Dip & Ext Diploma	City of Bristol College
Alternative Academic Qualification BTEC National in Engineering (Extended Certificate)	St Brendan's Sixth Form College

Courses Available - Specialist and Vocational

Specialist and Vocational courses	College or provider
Light Vehicle Maintenance Diploma L2 or L3	City of Bristol College Weston College
Light Vehicle Maintenance and Repair Diploma L1, L2 or L3	City of Bristol College Knowle DGE
Heavy Vehicle Maintenance and Repair L2 Sub Diploma	City of Bristol College
Motorsport Diploma L2 or L3	Weston College
Motor Vehicle Entry 3	City of Bristol College
Motor Vehicle L1 Cert	City of Bristol College
Motor Vehicle and Transport Maintenance L1	Bath College
Performing Electrical Operations L1 & L2	BEMA
Performing Engineering Operations Certificate L1 & L2	BEMA Weston College
Vehicle Component Fitting Diploma L2	Weston College
Vehicle Fitting Principles L2	Bath College
Health & Social Care	
Applied Psychology BTEC L3 National Certificate & Extended	Cabot Learning Federation Post-16
Care Entry 3	City of Bristol College
Caring for Children L1 Certificate and Diploma	Weston College
Child and Health Edexcel L1 Certificate	City of Bristol College
Children's Care, Learning and Development L2 BTEC Diploma	Weston College
Children's Play, Learning and Development L2 or L3 BTEC	Weston College
Childcare and Education L3 CACHE Certificate and Diploma	City of Bristol College
Counselling L3	City of Bristol College
Health & Social Care L3 BTEC National Foundation Diploma Yr 1	Cabot Learning Federation Post-16 City of Bristol College Weston College
Health & Social Care L3 BTEC National Extended Diploma (yr2)	Cabot Learning Federation Post-16 City of Bristol College

Courses Available - Specialist and Vocational

Specialist and Vocational courses	College or provider
Health & Social Care L1 BTEC Diploma	City of Bristol College Weston College
Health & Social Care L1	Weston College
Health & Social Care L3	Bath College
Health & Social Care L2 BTEC First/Extended Certificate	City of Bristol College St Brendan's Sixth Form College Weston College
Health & Social Care L2 BTEC Diploma	City of Bristol College St Brendan's Sixth Form College
Health & Social Care L3 BTEC National Foundation Diploma	Cabot Learning Federation Post-16
Health & Social Care L3 BTEC National Diploma	Cabot Learning Federation Post-16
Health and Social Care NCFE CACHE L2 Award	City of Bristol College
Health & Social Care L3 BTEC Diploma	Ashton Park Sixth Form City of Bristol College St Brendan's Sixth Form College Weston College
Health & Social Care L3 BTEC Extended Certificate	Cabot Learning Federation Post-16 North Bristol Post-16 Centre The Olympus Academy Trust St Mary Redcliffe and Temple School V6 Sixth Form
Health & Social Care OCR L2 Cambridge Technical Diploma	Cabot Learning Federation Post-16
Health & Social Care OCR L3 Cambridge Technical Certificate	Cabot Learning Federation Post-16
Health & Social Care OCR Level 3 Cambridge Technical Extended Certificate	Cabot Learning Federation Post-16
Alternative Academic Qualification BTEC National in Health and Social Care (Extended Certificate)	St Brendan's Sixth Form College
Health & Social Care OCR L3 Cambridge Technical Extended Certificate	Cabot Learning Federation Post-16
Health & Social Care OCR L3 Cambridge Technical Extended Certificate	Cabot Learning Federation Post-16

Courses Available - Specialist and Vocational

Specialist and Vocational courses	College or provider
Health & Social Care L3 BTEC Extended Certificate	Bristol Free School
Health & Social Care L3 BTEC National Foundation Diploma Yr1	City of Bristol College Weston College
Introduction to Childcare L1	Bath College
Introduction to Health & Social Care L1	Bath College
Intro Caring for Children and Young People NCFE CACHE L2 Certificate	City of Bristol College
Intro to Early Years Education and Care L2 CACHE Certificate	South Gloucestershire and Stroud College
L1 Vocational Studies	City of Bristol College Discovery Education Centre Weston College
NCFE CACHE L2 Children and Young People's Workforce England	South Gloucestershire and Stroud College
Information Technology	
Technical Qualification Digital-Technology BTEC L2	Ashton Park Sixth Form
Computing and IT C&G L2 Diploma	City of Bristol College
Computing L2	Access Creative College
Computing BTEC Extended Diploma L3	City of Bristol College Weston College
Digital and Media Entry 3	City of Bristol College
IT Users L1 BTEC Diploma / Certificate	City of Bristol College
IT Award/Certificate/Diploma L1	City of Bristol College Weston College
IT L2 BTEC Diploma	City of Bristol College South Gloucestershire and Stroud College Weston College
IT OCR L2 Cambridge Technical Diploma	Weston College
IT OCR L3 Cambridge Technical Certificate	The Olympus Academy Trust Weston College

Courses Available - Specialist and Vocational

Specialist and Vocational courses	College or provider
IT OCR L3 Cambridge Introductory Diploma/ Subsidiary Diploma	St Brendan's Sixth Form College
IT L3 BTEC (Foundation / Extended) Diploma	City of Bristol College Weston College
IT L3 BTEC Extended Diploma	City of Bristol College
ICT Systems and Principles Computer Hardware & Networking L3 Diploma	City of Bristol College
ICT Systems & Principles Computer Software and Programming L3 Diploma	City of Bristol College
IT L3 BTEC Extended Certificate	North Bristol Post-16 Centre
IT L2 Certificate for IT Users	A2A (HWV)
Pearson Computing and IT L2 Certificate	City of Bristol College
IT Diploma City & Guilds L2 (hardware & networking)	City of Bristol College
IT Diploma City & Guilds L2 (software)	City of Bristol College
Level 3 AAQ in IT	Bristol Free School South Bristol and Stroud College
IT : Data Analytics L3 Cambridge Advanced National - Certificate	Cabot Learning Federation Post-16
Alternative Academic Qualification Cambridge Advanced National in IT: Data Analytics (Extended Certificate)	Cabot Learning Federation Post-16 St Brendan's Sixth Form College
Land Based & Horticulture	
Floristry Award L2 & L3	City of Bristol College
Land-Based Horticulture L1 & L2	City of Bristol College Knowle DGE
Land Based Studies Award, Certificate & Diploma L1	Discovery Education Centre Knowle DGE
Media	
Animation & VFX L3	Access Creative College
Boomsatsuma Media at L3 / subsidiary diploma/ extended diploma	Boomsatsuma

Courses Available - Specialist and Vocational

Specialist and Vocational courses	College or provider
Computer Animation for Games & Film UoA London Ext Diploma	South Gloucestershire and Stroud College
Creative Media Production BTEC Diploma at L1 or L2	City of Bristol College
Creative Media (TV and Film) UAL L2 Diploma	City of Bristol College
Creative Media (TV, Film and Audio) UAL L3 Diploma/ Extended Diploma	City of Bristol College
Creative Media Production L3	Access Creative College City of Bristol College
Creative Media Production and Technology UAL Diploma L2	City of Bristol College South Gloucestershire and Stroud College
Creative Media (interactive Media and Games Design) UAL Level 2 Diploma	City of Bristol College
Creative & Digital Media (RSL L3 Extended Diploma in Creative Digital Media)	Digitech Studio School Bristol Access Creative College
Digital Media Production L2	Bath College
Digital Media Production L3	Bath College
OCR Level 3 Cambridge Technical Extended Certificate in Digital Media	St Bede's Catholic College
e-Sports BTEC L3 Diploma	Access Creative College Digitech Studio School Bristol South Gloucestershire and Stroud College
Film, Videography & Photography L3	Access Creative College
Games Art L3	Access Creative College
Games Development L2	Access Creative College
Games Technology L3	Access Creative College
Graphic & Digital Design L3	Access Creative College
Videography, Photography & Design L2	Access Creative College
Interactive Media with Games Design UAL L3 Diploma/ Extended Diploma	City of Bristol College
Media studies OCR L2 Cambridge Technical Diploma	City of Bristol College

Courses Available - Specialist and Vocational

Specialist and Vocational courses	College or provider
Media studies OCR L3 Cambridge Technical Diploma	The Olympus Academy Trust
Media Production UAL Diploma L2	South Gloucestershire and Stroud College Weston College
Media Production UAL Extended Diploma L3	South Gloucestershire and Stroud College Weston College
Music	
Event Production L3	Access Creative College
Music Performance L2 or L3 Rockschool Diploma	Access Creative College
Music Performance & Vocal Artist L2	Access Creative College
Music Performing L3 BTEC Certificate	Bath College Access Creative College St Brendan's Sixth Form College
Music Performing L3 BTEC Extended Certificate	The Olympus Academy Trust
Music Performance and Production UAL Diploma L3	Weston College
Music Production L3	Access Creative College
Music Production UAL Extended Diploma L3	Weston College
Music Performance UAL Extended Diploma L3	Weston College
Music Technology L3 BTEC Certificate / Extended	Bath College Digitech North Bristol Post-16 Centre The Olympus Academy Trust
Music UAL Diploma L2	Bath College Weston College
Music Technology L2 Rockschool Diploma	Access Creative College
Music Technology: Music Production L3 Rock School Diploma	Access Creative College Digitech
Music BTEC Diploma L1, L2 and L3	Knowle DGE
Vocal Artist L3	Access Creative College
Performing Arts	
Bath Theatre Academy (Performing Arts) L3	Bath College

Courses Available - Specialist and Vocational

Specialist and Vocational courses	College or provider
Introduction to Music & Creative Performance Arts L1	Bath College
Performing Arts L1 BTEC Diploma	Knowle DGE
Performing Arts L2 BTEC Diploma	Knowle DGE
Performing Arts L3 BTEC Diploma	Knowle DGE
Performing Arts (Acting/Drama Theatre) L3 BTEC Cert or Subsidiary Diploma	Ashton Park North Bristol Post-16 Centre St Brendan's Sixth Form College
Performing Arts (Musical Theatre) L3 BTEC certificate	North Bristol Post-16 Centre St Brendan's Sixth Form College
Performing and Production Arts UAL Diploma L2	Bath College South Gloucestershire and Stroud College
Performing & Production Arts UoA London Diploma L3	South Gloucestershire and Stroud College
Performing Arts: Acting Pathway UAL Extended Diploma L3	City of Bristol College South Gloucestershire and Stroud College Weston College
Production Arts: Make-Up Artist Pathway UAL Extended Diploma L3	South Gloucestershire and Stroud College Weston College
Production Arts: Technical Pathway UAL Extended Diploma L3	South Gloucestershire and Stroud College Weston College
Performing Arts: Dance Pathway UAL Extended Diploma L3	South Gloucestershire and Stroud College Weston College
BTEC L3 National Foundation & Extended Diploma in Performing	Circomedia
Arts Practice (Circus & Physical Theatre)	
Performing Arts (Urban Dance) L3 BTEC Extended Diploma	Cabot Learning Federation Post-16
Professional Acting (RSL L3 Extended Diploma in Creative and Performing Arts)	Bristol School of Acting
Musical Theatre (RSL Level 3 Extended Diploma in Creative and Performing Arts)	Bristol School of Acting

Courses Available - Specialist and Vocational

Specialist and Vocational courses	College or provider
Public Services	
Criminology and Law L2	Bath College
Entry to the Uniformed Services Certificate L1	Weston College
Public Services BTEC Diploma at L2 or L3	South Gloucestershire and Stroud College
Public Services L3 BTEC Extended Diploma or Subsidiary Diploma	South Gloucestershire and Stroud College Weston College
Public Services (Uniformed) L3 BTEC Certificate	MPCT – Training Academies South Gloucestershire and Stroud College
Public Services (Uniformed) L3 BTEC Subsidiary Diploma	South Gloucestershire and Stroud College
Uniformed Services NCFE Diploma L2	City of Bristol College South Gloucestershire and Stroud College Weston College
Entry to the Uniformed Services Award, Certificate, Diploma L2 BTEC	MPCT – Training Academies
Uniformed Services Edexcel L3 Dip/Ext Dip	City of Bristol College
Uniformed Protective Services L3	Bath College
Public Services BTEC Diploma at L2 NCSE or L3 BTEC	South Gloucestershire and Stroud College
BTEC Level 2 First Certificate in Public Services	St Brendan's Sixth Form College
BTEC Level 2 First Extended Certificate in Public Services	St Brendan's Sixth Form College
BTEC National Extended Certificate in Uniformed Protective Services	St Brendan's Sixth Form College
BTEC National Diploma in Uniformed Protective Services	St Brendan's Sixth Form College
Sport	
Gym Instructor L2 Certificate	Bath College City of Bristol College
Gym Instructing L2 – Men's Football Academy	Bath College
Gym Instructing L2 - Women's Rugby Academy	Bath College

Courses Available - Specialist and Vocational

Specialist and Vocational courses	College or provider
Health, Fitness and Exercise Instruction CYQ L2 Diploma	City of Bristol College
National Diploma & Extended Diploma in Sport Coaching & Development L3	Bristol City Robins Foundation
National Extended Diploma in Sport BTEC L3	Bristol City Robins Foundation
Personal Training L3 Diploma & Certificate	City of Bristol College
NCFE L 3 Certificate in Personal Training	Cabot Learning Federation Post-16
NCFE L2 Diploma in Sport	Cabot Learning Federation Post-16
Sport First certificate L2	Bath College Bristol City Robins Foundation St Brendan's Sixth Form College
Sport Extended Certificate BTEC L2	St Brendan's Sixth Form College
Sport BTEC Diploma L1	Knowle DGE South Gloucestershire and Stroud College
Sport BTEC Diploma L2	Ashton Park Sixth Form Knowle DGE South Gloucestershire and Stroud College St Brendan's Sixth Form College
Sport BTEC Diploma L3	Ashton Park Sixth Form Knowle DGE South Gloucestershire and Stroud College St Brendan's Sixth Form College
Sport BTEC Extended Certificate L3	Cabot Learning Federation Post-16 North Bristol Post-16 Centre St Brendan's Sixth Form College The Olympus Academy Trust
Sport L3 BTEC Extended Diploma or Subsidiary Diploma	Cabot Learning Federation Post-16 Knowle DGE South Gloucestershire and Stroud College St Brendan's Sixth Form College
Sport- Men's Football Academy L2	Bath College
Sports Coaching and Development – Men's Football Academy L3	Bath College
Sports Coaching and Development L3	Bath College

Courses Available - Specialist and Vocational

Specialist and Vocational courses	College or provider
Sport - Women's Rugby Academy L2	Bath College
Sports Coaching and Development- Woman's Rugby Academy L3	Bath College
Sport (Fitness and Personal Training) L3 BTEC	South Gloucestershire and Stroud College
Sport (Development, Coaching and Fitness) BTEC L3	Bath College Bristol Rovers Community College South Gloucestershire and Stroud College Weston College
Sports and Active Leisure Introductory Diploma L1	South Gloucestershire and Stroud College Weston College
Sport and Exercise Science Extended Diploma L3	South Gloucestershire and Stroud College Weston College
Technical Qualification Sport and Activity Leadership BTEC L2	Ashton Park Sixth Form
E Sports L3 Extended Diploma	Digitech
Sport OCR L3 Extended Certificate	The Olympus Academy Trust
BTEC Level 1 Introductory Diploma in Sport	Bristol City Robins Foundation
Sport Coaching Level 2 Programmed of Study including NVQ L2 in Activity Leadership	Knowle DGE
Travel, Tourism & Hospitality	
Barista Skills Award L2	Weston College
Catering Entry 3	City of Bristol College
Catering & Hospitality Certificate L1	City of Bristol College Discovery Education Centre
Cabin Crew Aviation L2	Bath College City of Bristol College South Gloucestershire and Stroud College
Commis Chef L3	City of Bristol College
Air Cabin Crew L1 & L2 City & Guilds	City of Bristol College
Airport Ground Operations L2	City of Bristol College

Courses Available - Specialist and Vocational

Specialist and Vocational courses	College or provider
Exploring the World of Aviation (Airport Operations & Cabin Crew) L1 Certificate	City of Bristol College
Food Preparation and Service L2 Technical Certificate	City of Bristol College
Food, Science and Nutrition Extended Diploma L3	Bristol Free School
General Cookery Certificate L1	Weston College
General Food and Beverage Service L2 Cert	City of Bristol College
Home Cookery & Food Hygiene L2 BTEC	Square Food Foundation
Hospitality and Tourism L2	Bath College
Introduction to Hospitality, Catering & Tourism L1	Bath College
Production Chef L1	City of Bristol College
Professional Cookery L2	Bath College City of Bristol College
Professional Cookery Advanced Diploma L3	Bath College City of Bristol College Weston College
Professional Food & Beverage Service Diploma L2	City of Bristol College Weston College
Professional Cookery VRQ Diploma L1, L2 or L3	Weston College
Travel and Tourism L1 Diploma, Certificate or Award	City Of Bristol College South Gloucestershire and Stroud College Weston College
Travel and Tourism L2 Award	South Gloucestershire and Stroud College
Travel and Tourism L2 BTEC Certificate/Extended Certificate	South Gloucestershire and Stroud College Weston College
Travel and Tourism L2 Diploma City & Guilds	City of Bristol College
Travel and Tourism L3 Subsidiary/Diploma	South Gloucestershire and Stroud College
Travel and Tourism L3 Extended Diploma	Bath College City of Bristol College South Gloucestershire and Stroud College Weston College
Travel and Tourism L3 Extended Diploma Subsidiary / Diploma	City of Bristol College

Courses Available - Other Courses

Other Courses	College or provider
Achieve	City of Bristol College
Arts Award Bronze & Silver	Creative Youth Network
Creative Futures - support for emerging young artists	Creative Youth Network
Employability Lvl 2/award, certificate, diploma	South Gloucestershire and Stroud College
Enterprise	The King's Trust South Gloucestershire and Stroud College
ESOL for 16-18 year olds Pre- entry to L2	City of Bristol College Weston College
Functional Skills in English (Entry L1 to L2)	A2A (HWV) Bristol City Robins Foundation Knowle DGE Military Preparation College South Gloucestershire and Stroud College Weston College
Get into Retail / Digital Marketing / I.T / Security / Health and Social Care	The King's Trust
Get Started with photography / art / music / conservation / cooking / outdoor activities	The King's Trust
IN-GEAR Entry 2 to L2	South Gloucestershire and Stroud College
Life and Living Skills Diploma (Level 1-3)	Blaise High School South Gloucestershire and Stroud College
NEET Programme	Bristol City Robins Foundation
Personal and Social Development (Life Skills) L2	South Gloucestershire and Stroud College
Team - E3, L1 or L2 Certificate in Teamwork, Employability, and Community skills	The King's Trust
Vocational & Work Skills L1	Cabot Learning Federation Post-16
RSL Creative and Digital Media: Games Design	Digitech
Health and Social Care Get Hired programmes	The King's Trust
Set Play – Employability skills	Bristol Bears Community Foundation

SEND Courses	College or provider
A2a Youth Training Scheme	A2a Youth Training HWV
Asdan Life skills challenges	Blaise High School South Gloucestershire and Stroud College
Asdan Personal Progress	Kingweston School
Award/Certificate for Employment E2/E3	Discovery Education Centre Stroud College
New 26 Silver Gold	Knowle DGE Learning
Progression to Independence	South Gloucestershire and Stroud College
Personal AQA/Developments Pre-entry to E2 Life Skills/Art Award	City of Bristol College Knowledge Education Centre
Asdan Progress	South Gloucestershire and Stroud College Blaise High School
English AQA Entry Level Pathways to Employment E2 to E3 English	The Park Centre Knowledge Education Federation Post-16 City of Bristol College
Asdan Beauty AQA Unit Award	South Gloucestershire and Stroud College Blaise High Education Centre
Pre-vocational Studies Entry to Level 1-3 Award	The Park Centre South Gloucestershire and Stroud College
RPA PAPE Life Skills BTEC L1 Award	City of Bristol College Discovery Education Centre
Realising Aspirations Supported Internship E3 to L1	South Gloucestershire and Stroud College City of Bristol College
Tolerance Challenge Maths AQA Entry Level L2 Maths	Greenhouse Learning Claremont School
Careers and Experiencing Sports Coaching BTEC L1 Award	Kingweston School Blaise High School
Workplace Skills Challenges Award	South Gloucestershire and Stroud College Knowledge Education Federation Post-16 City of Bristol College
Literacy Work Towards Entry level Arts Award	City of Bristol College Kingweston School
Vocational Studies Level 1 Geography	Greenhouse Learning South Gloucestershire and Stroud College
Functional Skills English Level 1	South Gloucestershire and Stroud College A2a Park Learning HWV
Entry Level 1-3 History Diploma Life skills challenges	Blaise High School Blaise High School City of Bristol College
Skills E2 Entry level 2	Discovery Education Centre
Entry Level 1-3 ICT & Level 1 Diploma Life skills challenges	Knowle DGE Kingweston School
Skills E3 Entry level 3	South Gloucestershire and Stroud College
Entry Level 1-3 Science Diploma Life skills challenges	The Park Centre Blaise High School
Skills E2 English	Knowle DGE A2a Young Training HWV
Entry L1 Maths Asdan Life skills challenges	Blaise High School HWV Kingweston School
Literacy Level 2 Hospitality Vocational Taster	Blaise High School Discovery Education Centre
Asdan Life skills challenges Land-based Sector Vocational Numeracy Work Towards Entry level 1	Discovery Education Centre Kingweston School Greenhouse Learning
Manufacturing Vocational Asdan Life skills challenges Taster Course	South Gloucestershire and Stroud College The Park Centre Kingweston School
Numeracy Entry level 1	The Park Centre A2a Youth Training HWV
Entry L2 Maths Short Course Asdan Life skills challenges	Blaise High School HWV Kingweston School
Numeracy Entry level 2	Blaise High School Discovery Education Centre
Football Short Course Asdan Life skills challenges	Kingweston School Discovery Education Centre
Numeracy Entry level 3	Knowle DGE Learning
Asdan Life skills challenges	South Gloucestershire and Stroud College Kingweston School
Numeracy Level 1	South Gloucestershire and Stroud College The Park Centre
Asdan Life skills challenges Numeracy Level 2	Kingweston School

[illegible]



This directory is available to download from:
bristol.gov.uk/schools-learning-early-years/where-you-can-get-post-16-education
It is accurate at the time of production (September 2025). However, changes can occur before courses start in September 2026.

If you think a young person may need some support from the Bristol Post 16 Team please contact us on:
post16participation@bristol.gov.uk or www.bristolesl.com/bristolpost16

Telephone: 0117 352 5721



Please recycle me: I can be dropped into your Black Recycling Box.

Designed by Bristol City Council, Bristol Design BD17718 August 2025