



Health and Safety Policy

It is the responsibility of all Cathedral Schools Trust employees, governors and volunteers to familiarise themselves with the contents of all Trust policies and any amendments hereafter.

**Cathedral Schools Trust
Bristol Cathedral Choir School**

February 2024

Contents

| | | |
|----|------------------------------------------------------------|----|
| 1. | Introduction | 3 |
| 2. | Organisational Chart for Health and Safety | 4 |
| 3. | Organisational Responsibilities | 4 |
| 4. | Management Arrangements | 5 |
| 5. | General Arrangements | 17 |
| 6. | References | 33 |
| 7. | Check list | 35 |
| 8. | Version Control | 38 |
| 9. | Approvals | 39 |

1 Introduction by the Chair of Governors and the Headteacher



This policy should be read in conjunction with Cathedral Schools Trust's overarching Health and Safety Policy.

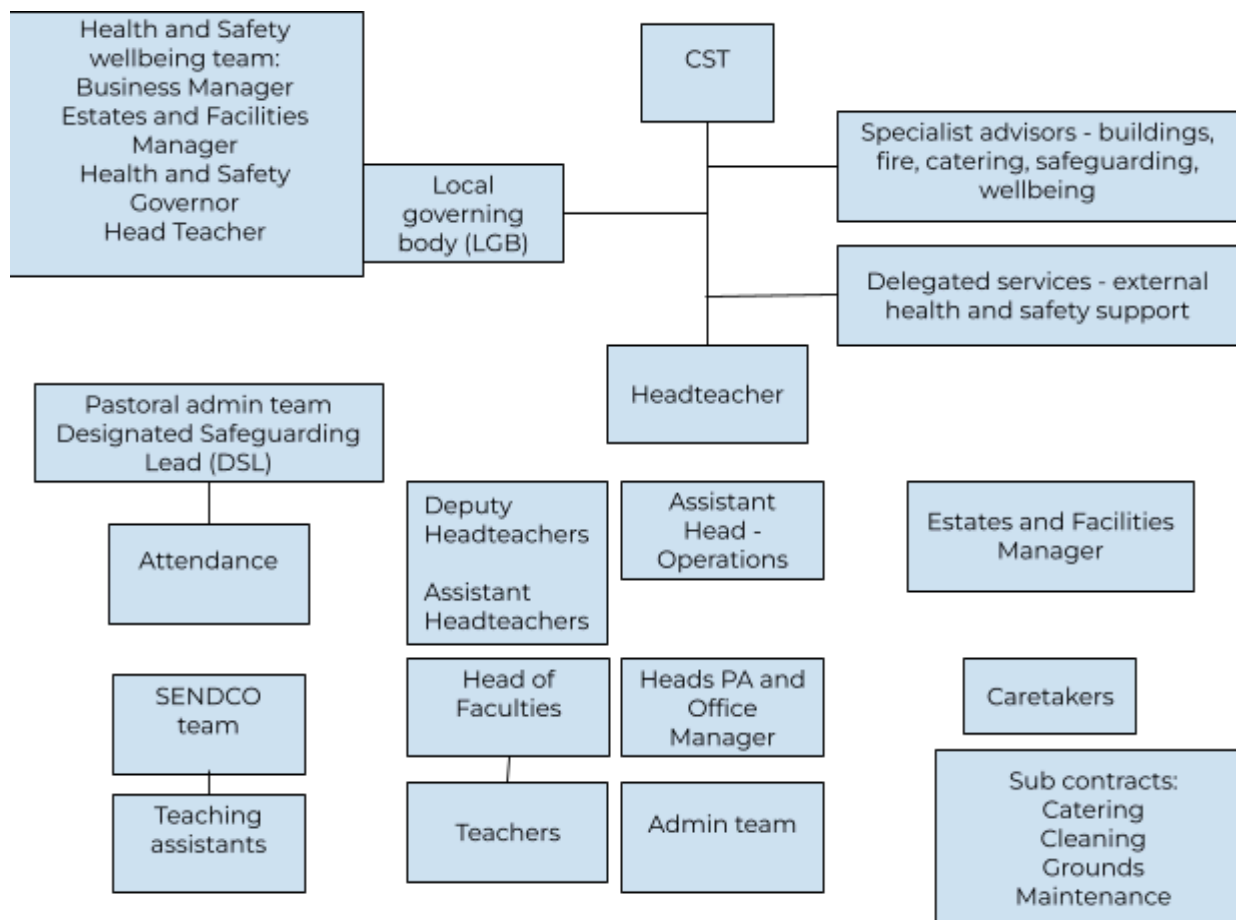
We recognise that certain elements of this document are set by the Trust as requirements, whilst others are for our local attention at this stage of our Health and Safety journey.

We have revised our management system covering the health, safety and well-being of all people within Bristol Choir Cathedral School. Anyone who is working, studying or visiting our school can be confident we have done our best to prevent harm to them.

To make our management task easier we have included some items that may not be strictly health and safety such as food hygiene but hopefully this is a sensible place to administer our regulatory compliance.

Good practice based on knowledge and experience means that we can do challenging activities safely. We can therefore encourage innovation, experiment and well considered risk-taking.

2 Organisational Chart for Health and Safety



See the Trust's organisational chart in CST's overarching health and safety policy.

3 Organisational Responsibilities

3.1 The organisation of the School to achieve health and safety

- 3.1.1 The Local Governing Body and Headteacher will follow Cathedral Schools Trust's overarching Health and Safety policy alongside published guidance from the Health and Safety Executive and related organisations such as the Food Standards Agency, Department for Education, Education and Skills Funding Agency and other regulators or advisors such as CLEAPSS, Environmental Health.
- 3.1.2 The school will regularly report to the Cathedral Schools Trust on health and safety matters. The Cathedral Schools Trust supports the member schools with the development of practice and procedure, risk assessment and guidance and the availability of internal and external advisors. Schools are encouraged to develop their own specific practice and procedure providing it is consistent with the trust objectives of achieving a high standard of health, safety and wellbeing.

- 3.1.3 Whenever appropriate, health and safety will be organised in cooperation with child protection and safeguarding arrangements, security, personal health issues such as mental health and any other relevant matters. Employees with designated duties will be recruited and trained to have the skill, knowledge and experience to carry out their work effectively.
- 3.1.4 The organisation of the school will provide the means to manage and supervise staff, report defects and arrange repairs (utilising iAM Compliant), inform and brief employees, involve staff and consult with them and provide a means of whistle-blowing should the need arise.
- 3.1.5 The rights of employees will be formally displayed using the Health and Safety Executive poster which will be put on a notice-board in the main reception.

4 Management Roles within the School (Organisation) (This content follows the posts identified in the flow chart above and vice-versa)

4.1 Governors on the Local Governing Body (the LGB)

- 4.1.1 The Governors of Bristol Cathedral Choir School recognise the need to identify organisational arrangements in the school for implementing, monitoring and controlling health and safety matters. They also accept the need to consult individuals before allocating particular health and safety functions. Individual duties including reporting arrangements, organisation and accountability.
- 4.1.2 The Governors are committed to meeting the **safeguarding** requirements set out in the government guidance "Keeping Children Safe in Education and Working Together to Safeguard Children".
- 4.1.3 The Governors will support the Leadership team to make preparations to deal with:
- **Critical incidents** at the school such as fire, flood, illness, threats of violence and terrorism, bereavement;
 - **Continuity of business** in the event of a threat such as that created by a critical incident;
 - The **Contribution** by the school to help the community at large cope with some kind of critical incident. An example would be providing a rest centre if a fire meant people were unable to stay at their homes.

4.2 Headteacher

- 4.2.1 The Headteacher is accountable to the Governors for implementing the Trust and school's Health and Safety Policy and for all matters relating to health and safety within the school.

- 4.2.2 The Governors require the Headteacher to ensure that the H&S policy is implemented effectively and understood at all levels and is effectively controlled, regularly monitored, and revised as necessary.
- 4.2.3 The Headteacher may delegate the management of H&S matters to an appropriate competent member of staff.
- 4.2.4 The Headteacher will delegate the:
- Safeguarding Single Central Record (DBS) to HR reporting to the Headteacher.
 - Special Educational Needs and Disability issues to the member of staff holding the title SENDCo.
 - Co-ordination of off-site visits/trips to a member of staff who will be designated the Educational Visits Co-ordinator (EVC).
- 4.2.5 The Headteacher will be designated the **Asbestos Duty Holder** for the school and will ensure compliance with the Control of Asbestos Regulations and any update, insofar as they relate to preventing the release of asbestos fibres in the school. The daily management of this will be delegated to the Site Manager.
- 4.2.6 The Headteacher is responsible for managing potential risks from **Legionella bacteria**, which may arise from work activities. The management of Health and Safety at Work Regulations and more specifically the Control of Substances Hazardous to Health Regulation assist and support the assessment, prevention or control the risk from the bacteria by taking the suitable precautions. The daily management of this will be delegated to the Site Manager.
- 4.2.7 The Headteacher will be designated the **Responsible Person** for the school in accordance with the Regulatory Reform (Fire Safety) Order, and will ensure that Fire Risk Assessments are regularly undertaken of the school and its activities, and as a consequence appropriate Fire Precautions are put in place. The daily management of this will be delegated to the Site Manager
- 4.2.8 The Headteacher will seek members of staff to take on the role of First Aiders at various skill levels, and Administrator of Medicines and Fire Wardens. All will be trained and their competence regularly assessed in accordance with arrangements and risk assessments attuned to the school's activities and responsibilities.
- 4.2.9 Medical support for those pupils who need it will be provided in line with DfE guidance.
- 4.2.10 The Headteacher will work with the Trust Estates Manager and Site Manager to ensure that the competent contractors are employed and will oversee the planning and safe execution of construction, refurbishment, and maintenance work on buildings, plant, and equipment carried out by contractors or other third parties. This is part of the **client duty under The Construction (Design and Management) Regulations**. The daily management of this will be delegated to the Site Manager. Further to this, the Headteacher / Site Manager will consult the Central Estates Team / Estates Manager where cost of any maintenance exceeds £5000.00

- 4.2.11 The Headteacher will delegate the day-to-day co-ordination of all contractual and maintenance work carried out on school premises to the Site Manager, who will liaise with the Staff to ensure safety procedures and policy agreements are observed.
- 4.2.12 The Headteacher is responsible for ensuring that all new, amended or updated documentation and information regarding Health and Safety are brought to the attention of the relevant stakeholders. This is carried out via inductions and meetings etc.
- 4.2.13 The Headteacher must ensure that accidents and all other H&S incidents, including near misses, are reported in accordance with legal requirements such as the Reporting of Injuries, Diseases and Dangerous Occurrences Regulations (RIDDOR) and local procedures, and that the agreed procedure for reporting all defects, hazards and problems regarding H&S matters function efficiently and effectively. Schools must use the Delegated Services Go To online reporting method and the definitions associated with it.
- 4.2.14 Accidents involving pupils may need to be reported through safeguarding requirements as well. This will be assessed on the individual accident.
- 4.2.15 The Headteacher will be a member of, and participate in at least once annually, the School Staff Consultative Health and Safety Committee, consulting with staff representatives on all H&S matters and co-operating with them in the execution of their duties.
- 4.2.16 The Headteacher with the school's H&S Team will review at least once a year or as appropriate according to the individual document:
- i) Fire and Evacuation procedures;
 - ii) Lockdown and terrorism procedures;
 - iii) Compliance
 - iv) First Aid provision both in the school and on off site visits;
 - v) All other H&S policies, procedures, codes of practise, risk assessments, and guidelines;
 - vi) When doing these reviews the links with **safeguarding** will need to be anticipated so there are no gaps in policy practise.
- 4.2.17 The Headteacher will seek advice, when appropriate, from the Trust Estate Manager and Site Manager and/or a competent person/s and outside agencies that are able to offer informed and expert opinions.
- 4.2.18 The Headteacher, Trust Estate Manager and the Site Manager will have the authority to stop what is considered unsafe practises, or the use of any plant, machinery, equipment, tools, materials and substances.
- 4.2.19 The Headteacher will make arrangements, with appropriate members of staff for improvements to premises, plant, machinery and equipment.
- 4.2.20 The Headteacher will ensure that appropriate training has or will be given to employees (including temporary and part-time employees), agency and other

contract staff, and volunteer helpers, to enable them to fulfil their responsibilities. This must include newly appointed staff and staff transferred within the school to other duties. The daily management of this will be delegated to the Site Manager, SLT lead or relevant member of staff.

- 4.2.21 The Headteacher will ensure that the appropriate information, instruction, training and supervision is in place for all schemes of work for pupils, including both internal and external work experience arrangements. The daily management of this will be delegated to the appropriate department lead and SLT with support from the Site Manager
- 4.2.22 The Headteacher, Site Manager, SLT and the school's Deputy/Assistant Headteacher shall have authority to determine those who may or may not be welcome on the site and premises. Those not welcome are considered to be banned.
- 4.2.23 In addition they are authorised to warn individuals, in the event of unacceptable behaviour, about "section 547 of the Education Act 1996" and as updated, powers available under the education legislation, (or any successor legislation) and the risk of criminal procedures.
- 4.2.24 In the event of a ban being imposed following the appropriate procedures, should there be an appeal, a panel of Governors not involved previously in the matter will hear the case in accordance with the rules of natural justice and make their conclusions on the matter on the balance of probabilities.
- 4.2.25 The Headteacher, Site Manager and relevant member of SLT are responsible for the school's approach to staff "Wellbeing". Risk assessment will be done when needed to put in place the controls needed to remove or reduce risks to physical and mental health.
- 4.2.26 This will include providing a confidential helpline for staff to use as required should they be worried about issues such as stress. This is provided through Health Assured and can be accessed by calling 0800 030 5182 or by clicking on Health Assured through the Connect intranet (Username: Cathedral/ Password: Schools). It is unlikely that the staff will require traditional health surveillance for exposure to noise or chemicals but if required this will be provided by a competent Occupational Health provider with a full range of services.

4.3 Site Manager

- 4.3.1 The Site Manager is the designated Health and Safety lead for the school and the post holder will administer and manage day to day health and safety matters plus specific matters on behalf of the Headteacher, taking a proactive interest in the health and safety aspects of all activities.
- 4.3.2 The Site Manager will act as the day-to-day link for health and safety between the school and the Headteacher, Competent Persons (or body), Governors, contractors and consultants etc. They will work with personnel in the school, who have a lead role in H&S e.g. the Deputy/Assistant Headteachers, the Educational Visits Coordinator, Kitchen Supervisor/Catering Manager etc.

- 4.3.3 The Site Manager will coordinate all contractual work and maintenance carried out on the premises. They must make the Headteacher / Operations Manager aware of all contractors and/or third parties entering the school to undertake maintenance, service, or works contracts whilst also liaising with others, as appropriate, to ensure safety procedures and policy agreements are observed.
- 4.3.4 The Site Manager will have the authority to check that contractors have adequate safety procedures in force and that they are aware of the school's health and safety policy as it affects them and any other relevant H&S information as appropriate e.g. copy of asbestos register.
- 4.3.5 The Site Manager will keep iAM Compliant up to date with results of repair and maintenance, taking action to organise work when equipment is overdue for attention.
- 4.3.6 The Site Manager will ensure that all plant, machinery, equipment, tools, materials, and substances etc, received from suppliers for the school's use are accompanied by appropriate information, including in particular, manufacturers data sheets, COSHH guidance, instruction handbook's etc, prior to use.
- 4.3.7 The Site Manager must be familiar with both the Trust and the school's health and safety policies and implications for their activities and working arrangements for the employees. They should work in accordance with the policies and any other guidance issued by the school and Trust, ensuring that they apply industry specific best practice.
- 4.3.8 The Site Manager should receive copies of maintenance and inspection reports/certificates for all plant and equipment used on the school grounds site maintenance service. This includes portable appliance testing (PAT) and vehicle safety checks. These should be uploaded on to iAM Compliant.
- 4.3.9 Defects and other problems should be reported to the Site Manager through iAM Compliant. The Site Manager will organise everyday repairs of equipment with the remit for this reviewed at least annually.
- 4.3.10 The Site Manager is responsible for informing the Trust Estates Manager and the Headteacher of any issue that may impact on the annual review of the fire risk assessment or its replacement.
- 4.3.11 The Site Manager is responsible for risk assessing their work and related activities including fire risk assessments and working at height in line with the Working at Height Regulations 2005. They are responsible for risk assessing vehicle and pedestrian interactions or the supply of new equipment. The Site Manager will manage the School's H&S Risk Assessment system, to include specialist subjects science, DT, music, Art, Drama and PE and ensure that it is appropriately reviewed and or/updated. This is to be done in dialogue with the relevant SLT line manager
- 4.3.12 The Site Manager needs to ensure that safeguarding best practice is followed and that Emergency Procedures are in place for evacuation, lockdown or lost or missing children.

4.4 School Estates Team

- 4.4.1 The School Estates Team is responsible for maintaining the security of the school site by undertaking regular security checks, monitoring fire safety equipment and carrying out fire drills and undertaking maintenance duties and associated tasks.
- 4.4.2 The School Estates Team will undertake a wide range of general maintenance to ensure the school site is safe including repairs and minor improvement works and routine inspections of the building to identify defects and record maintenance requirements.
- 4.4.3 The School Estates Team will ensure satisfactory levels of maintenance, cleanliness and hygiene are achieved and maintained throughout the premises. They will comply with health and safety policies, procedures and legislation at all times, taking care for their own health and safety as well as other persons who may be affected by their acts or omissions.
- 4.4.4 They will promote the health and safety of pupils, students, staff and visitors at all times (in line with the appropriate health and safety legislation)

4.5 Role of EVC (the educational visits coordinator)

- 4.5.1 Be a champion for all aspects of visits and outdoor learning.
- 4.5.2 Challenge colleagues across all curriculum areas to use visits and outdoor learning effectively in order to provide a wide range of outcomes for children and young people and contribute towards establishment effectiveness.
- 4.5.3 Support/oversee planning so that well considered and prepared arrangements can lead to well-managed, engaging, relevant, enjoyable and memorable visits / outdoor learning. Ensure that visits and trips are carried out in line with the Educational Visits Policy (subject to ratification) and that planning complies with the employers requirements and that the risk assessments / arrangements are ready for approval within agreed time scales.
- 4.5.4 Support the Headteacher in approval decisions so that all those with responsibility have the competence to fulfil their roles.
- 4.5.5 Ensure that activity is evaluated against its aims for learning and development, that good practice is shared, any issues are followed up and comply with statutory and employers requirements.
- 4.5.6 Keep the senior leadership team and governors informed about the visits/outdoor learning taking place and their contribution to establishment effectiveness. with appropriate management reports.

4.6 Designated Safeguarding Lead (DSL)

4.6.1 The Headteacher and the Site Manager should liaise with the DSL so that any relevant activities or procedures will improve child protection.

Examples are:-

- First Aid
- Medication
- Trips
- Coaching activities
- E-safety

4.6.2 Policies relating to safeguarding and child protection should make reference to health and safety issues as appropriate.

4.7 Deputy/Assistant Headteachers

4.7.1 The Deputy/Assistant Headteachers will deputise in the absence of the Headteacher and will work with the site manager to ensure good Health and Safety practices are maintained.

4.7.2 The Deputy/Assistant Headteachers will work primarily with teaching personnel in school who have a lead role in managing higher risk activities. There will be a variety of these and most will have guidance available from industry, governing body or specific advisory organisations. These will be used by Bristol Cathedral Choir School.

4.7.3 The Deputy/Assistant Headteachers should encourage teachers and other practitioners to be risk aware rather than risk averse. Coping with risk is part of a child's learning and is often considered by OFSTED and equivalent inspection organisations during their visits. This will primarily be carried out with the use of Risk Assessments.

4.8 Head of Faculties

4.8.1 Bristol Cathedral Choir School will ensure that all staff under their control are fully aware of their requirements and responsibilities under the Health & Safety Policy and that any changes to the policy or arrangements are brought to the attention of all persons under their control.

4.8.2 Heads of Faculties will create a faculty specific subject policy incorporating appropriate aspects of Health and Safety and therefore linking to this document. They will make sure this information is passed to staff. They will be responsible for:-

- Undertaking Health & Safety Inspections, ensuring that all necessary preventive and/or corrective measures are being implemented. Documenting these and issuing to necessary stakeholders.

- Ensuring that all employees under their control are trained and competent to carry out their work in a safe manner; are fully aware of known hazards and risks to health and safety and that the necessary precautions are in place.
- Ensuring that any unsafe tool or machine is removed from use or immobilised and is made safe/repaired or replaced before use.
- Ensuring that any instructions given to employees take full account of the employee(s) individual capabilities and their Health & Safety.
- Any changes that may affect health and safety are brought to the attention of the Headteacher and Site Manager
- Ensuring all employees under their control are aware of the procedures to be followed in the event of fire/emergency/lockdown or accident and the action to be taken.
- Ensuring that adequate supervision is provided/maintained at all times, particularly where inexperienced workers are being employed.
- Ensuring that individuals clean as they go and good housekeeping is maintained at all times.
- Ensuring that any dangerous or potentially dangerous situations are immediately rectified or, if this is beyond their scope of responsibility, the matter is reported immediately to the Headteacher/ Site Manager
- Ensuring that employees for whom they are responsible immediately report any "accident", 'illness or disease', "incident" or "near miss" occurring whilst at work to the Site Manager. Assist investigating any accident, illness, disease, incident or near miss to property or person(s) that has been reported and records can be accessed.
- Ensuring that their areas of responsibility are frequently examined to identify any hazards and implement remedial action as necessary.
- Ensuring that all employees under their control receive full and adequate training necessary to carry out their work safely.
- Monitor the health safety and wellbeing performance within their section

4.9 Role of SENDCo

- 4.9.1 The person with lead responsibility for SEN and disability issues will give advice to colleagues and liaise when necessary on health and safety related matters. There will be links with the equality policy (see the school website for a copy) and related documents and actions.

4.10 Role of the Catering Manager (Sub Contractor)

- 4.10.1 Catering contracted staff must be familiar with the school's health and safety policy and its implications for catering activities and working arrangements for the employees.
- 4.10.2 Whilst the catering contractor must be aware of the school's requirements they will normally follow their own health and safety procedures. If there is any conflict then this should be resolved by formal discussion with the Site Manager in the first instance and then the Headteacher.
- 4.10.3 The Catering Manager and staff are expected to be familiar with the Food Safety Act 1990 and relevant legislation. The advice and guidance from the Food Standards Agency and other regulators must be followed. This includes having a hazard assessment and critical control point food safety management system in place.
- 4.10.4 The Catering Manager and staff are expected to achieve not less than four stars and move to five stars after an agreed period under the local government environmental health rating system. All inspections and inspection reports must be supplied to the Site Manager.
- 4.10.5 The Site Manager should receive copies of maintenance and inspection for all plant and equipment used in the school catering service. This includes portable appliance testing and gas safety checks.
- 4.10.6 Defects and other problems should be reported to the Site Manager.
- 4.10.7 The Catering Manager is responsible for understanding the elements of the Fire Risk Assessment that particularly relates to their activities within the Kitchen and will augment this with detailed procedures in the event of an incident.
- 4.10.8 The Catering Manager is responsible for risk assessing catering and related activities such as food deliveries or the supply of new equipment. This covers both safety and health related issues.
- 4.10.9 All employees in catering should be given suitable induction training and continuing professional development training. School procedures for health and safety and fire as well as safeguarding are to be included in their training.
- 4.10.10 The Catering Manager and staff need to ensure safeguarding best practice is followed.

4.11 Role of the cleaning contractor and staff

- 4.11.1 The cleaning contractor and staff must be familiar with the school's health and safety policy and its implications for cleaning activities and working arrangements for the employees.
- 4.11.2 Whilst the cleaning contractor should ensure all cleaning staff are aware of the school's requirements they will normally follow their own health and safety procedures. If there is any conflict then this should be resolved by formal discussion with the Site Manager in the first instance and then the Headteacher.

- 4.11.3 The cleaning contractor should ensure cleaning staff are familiar with COSHH (Control of substances hazardous to health) requirements for the storage and usage of cleaning products. This includes having a data sheet and risk assessment for all products in use.
- 4.11.4 The Site Manager should have access to the data sheets and risk assessments. Any equipment supplied by the cleaning contractor should have a PAT certificate.
- 4.11.5 Defects and other problems should be reported in writing to the Site Manager.
- 4.11.6 The cleaning contractor is responsible for risk assessing cleaning and related activities such as manual handling and the correct use of hazardous substances. This covers both safety and health related issues. These need to be shared with the Site Manager and updated yearly, after an incident or a change in legislation.
- 4.11.7 All cleaning staff should be given suitable induction training and continuing professional development training including first aid and fire warden training. School procedures for health and safety and fire as well as safeguarding are to be included in their training. All cleaning staff should participate in fire drills and lockdown procedures and comply fully with requirements.
- 4.11.8 All cleaning staff need to ensure safeguarding best practice is followed.

4.12 Role of First Aiders and Administration of Medicines

- 4.12.1 The assessment carried out under the First Aid at Work Regulations is that the school would expect to have a First Aider on site when open for pupils. The policy of the Trust is that they will provide first aid for pupils and visitors which means that the school will have a number of first aiders and there will be an element of other training such as the use of epi-pens/defibrillators and the administration of medication.
- 4.12.2 Wherever possible, during the holidays and after school, as a minimum, there will be a First Aider on site.
- 4.12.3 On-site First Aid boxes are kept in the medical room and in offices across the site . They are checked and replenished by the Lead First Aider/ Appointed Person.
- 4.12.4 Medications such as individual students' spare inhalers are kept behind reception and self administered by the student under supervision. Epi Pens are kept on the student's person, with spares kept in locations across the site. Other specialist items such as those requiring refrigeration are kept in the medical room and self administered under the supervision of authorised staff.
- 4.12.5 All school vehicles carry a first aid kit. These must be checked regularly.
- 4.12.6 The First Aid Training and Administration of Medicines training for staff is refreshed three yearly [including Paediatric First Aid].

4.13 Role of the Fire Wardens

- 4.13.1 Fire wardens support fire safety procedures such as prevention, inspection, detection and alarm and evacuation. They may also help with other critical incidents such as gas leaks or water floods, lockdowns and terrorist type events.
- 4.13.2 Although all staff have a role in these items and in an emergency would be expected to support leadership staff as far as they are able the fire wardens have a defined list of tasks. They are appointed by the headteacher and have been given training on their roles.
- 4.13.3 As part of the fire and other emergencies plan they support leadership staff in organising an evacuation if needed or other movement of colleagues, pupils and visitors.
- 4.13.4 They will 'sweep' the building where safe to do so and close windows and doors behind them.

4.14 Role of Trade Union Health and Safety Representatives

- 4.14.1 In the absence of TU representatives the head teacher will seek volunteers from teaching and support staff areas with whom to consult and comply with the consultation with the Health and Safety (Consultation with Employees) Regulations.

4.15 Role of Employees

- 4.15.1 Every employee has a legal responsibility under the Health and Safety at Work Act 1974 Section 7 to take reasonable care for the health and safety of themselves and of other persons who may be affected by their acts or omissions at work and to cooperate with their employer in the performance of the employer's health and safety duties.
- 4.15.2 All employees will be given access to the school's health and safety policy when they start work through their induction and need to be familiar with all the documents relating to health and safety in the school. Established employees will be made aware of the policies and any changes as part of the update procedure. Employees must pay particular attention to the policy and risk assessments as they relate to particular work activities.
- 4.15.3 Employees must be familiar with the health and safety policy, its implications and any procedures, arrangements and practises as applicable to their roles and responsibilities. All employees of the school should be notified of any updates to this policy.
- 4.15.4 Employees are responsible and accountable to the governors, the head teacher and those delegated various responsibilities as described above for the implementation of the school's health and safety policy in the performance of their duties.

- 4.15.5 Employees must conform to responsibilities as laid down in safe working arrangements for specific roles and responsibilities.
- 4.15.6 The school's staff members must ensure that all pupils or persons under their control receive instruction and are provided with suitable training to enable them to behave in a safe and efficient manner.
- 4.15.7 If staff find a problem they must first isolate, then take immediate safety action, then report, [verbally and in writing] all problems, defects and hazards to IAM Compliant or Site Manager as soon as they become apparent.

4.16 The role of pupils

- 4.16.1 Pupils are expected to follow the behaviour requirements of the school and to cooperate in the health and safety management processes. Teachers and school staff generally are responsible for making pupils aware of health and safety procedures whether during lessons, trips or more generally.
- 4.16.2 The school has an overall responsibility for safeguarding young people which includes health and safety issues. There are separate policies on safeguarding and child protection. Related policies and procedures are for example online safety and minibus usage.
- 4.16.3 The school will encourage pupils to learn life skills which include assessing and managing hazards and risks, exploring risky activities so they can be achieved safely and learning how to prepare for adult life and work.
- 4.16.4 Pupils will be encouraged to take part in the school community and contribute to health and safety initiatives.

4.17 Role of parents and carers

- 4.17.1 Anyone who is not employed by the school is covered by the general duties described in Section 3 of the health and Safety at Work act 1974.
- 4.17.2 Parents/carers, other relatives and visitors in general are expected to follow the instructions and guidance of the school in regard to health and safety.
- 4.17.3 The school hopes that parents/carers and all others connected with the work of the school will contribute to the high standard of health and safety required.
- 4.17.4 The PTA agrees to abide by the school's policies and procedures where these involve premises, facilities, staff and pupils.
- 4.17.5 If the PTA is generously offering to provide active help with construction and maintenance projects on the site the volunteers must be able to prove any necessary competence,

4.18 The role of external advisors

- 4.18.1 Where possible the school will have its own staff trained to provide advice and expertise.
- 4.18.2 External advisors will be used when necessary on health and safety issues such as gas safety, critical incidents, trips and health and safety management.

4.19 The role of external regulatory agencies

4.19.1 The school will make use of the statutory requirements and non statutory guidance published by regulatory agencies including:

- Avon Fire and Rescue Service
- Avon and Somerset Police
- Bristol City Council/North Somerset Council (Failand Sports Ground)
- Bristol water
- Department for Education
- The Environment Agency
- The Food Standards Agency
- The Health and Safety Executive
- Ofsted
- UK Health Security Agency

4.19.2 The school will cooperate fully with any informal visit, inspection or investigation by the above agencies or other authorised bodies.

4.20 Training Matrix

| Role | Training | Frequency |
|--------------------|------------------------------------------------------------------------|------------------------------|
| Chair of Governors | H&S for Directors | Once then 2 yearly |
| Governors | H&S for Directors | Once then 2 yearly |
| H&S Governor | H&S for Directors Legionella Fire Asbestos Awareness | Once then refresher annually |
| Headteacher | H&S for Directors Legionella Fire Asbestos COSHH Stress | Once then refresher annually |
| Site Manager | H&S for Directors Legionella | Once then refresher annually |

| | | |
|---------------------|---------------------------------------------------------------------------------------------------------------------------------------------------------------|-----------------------------------------|
| | <p>Fire Asbestos COSHH Manual Handling Working at Height Food Safety and Hygiene Stress Managing Contractors Lone Working</p> | |
| School Estates Team | <p>Legionella Fire Asbestos COSHH Manual Handling Power tools Working at Height Managing Contractors Lone Working</p> | Once then refresher annually |
| Employees | <p>Appropriate training as deemed necessary in risk assessments eg. Fire wardens, DSE, first aiders etc.</p> | As in accordance with risk assessments. |

This matrix is a guide only – other training will or may be required.

5 General Arrangements

5.1 The arrangements within the School to achieve health and safety.

- 5.1.1 The school will follow industry best practices using published documents available from regulators such as the Health and Safety Executive. “Industry” includes education and all other relevant areas of work such as building maintenance, electrical equipment and catering.
- 5.1.2 It will use the advice of recognised organisations at national level such as CLEAPSS (for science -design and technology), DATA (for design and technology) and AfPE (for sport and other activities), the outdoor advisors panel (for off- site activities) and national governing bodies.
- 5.1.3 The school will have employees trained in health and safety at varying levels for general awareness to specialist knowledge in certain fields.

- 5.1.4 The school will call on external help when needed whether as a contractor such as a qualified electrician or gas technician or as an advisor.
- 5.1.5 The school will develop their own practice and procedures, risk assessments and guidance and may use internal and external advisors, providing this is consistent with the Trust objectives of achieving a high standard of health and safety.
- 5.1.6 The school's health and Safety team (Headteacher, Site Manager, Designated Safeguarding Lead, Health and Safety Governor, Lead First Aider) will review the schools Risk Register and undertake internal and external inspections/walkarounds not less than every term (three times a year).

5.2 Staff consultation

- 5.2.1 The school will work with trade union representatives where they are in post and with staff representatives where they are present. The School supports both roles as part of employee involvement and consultation. ((Safety Representatives and Safety Committees Regulations and Health and Safety (Consultation with Employees) Regulations).
- 5.2.2 Where there are Trust wide issues that are raised these will be shared between the schools so that good practice is promoted in all locations and activities.
- 5.2.3 The school has a Health and Safety Team. The Trust's Estates Manager will attend a proportion of the meetings to listen to feedback which can be used by the Trustees to monitor and improve health and safety performance including the performance and effectiveness of this Health and Safety policy.

5.3 Monitoring and auditing health, safety and wellbeing by the Local Governing Body

- 5.3.1 The Local Governing Body will receive an annual report on health and safety and wellbeing matters
- 5.3.2 The report will include:
- (1) Statutory information the School has provided to regulatory bodies such as accident reports under the Reporting of Injuries, Diseases and Dangerous Occurrence Regulations, food hygiene inspections by local Environmental Health departments and fleet vehicle MOTs;
 - (2) Confirmation that all emergency plans such as fire risk assessments and fire action procedures are in place and up to date;
 - (3) Confirmation that the risk register is up to date;
 - (4) The status of all risk assessments and that they meet industry standards;
 - (5) The status of all policies and that they meet regulatory and industry standards;
 - (6) Describe any educational attainment problems caused by health and safety issues and also educational successes thanks to informed use of health and safety principles;
 - (7) The outcomes of in-house site inspections, off-site trip provider inspections, self-assessed audit and external independent audits;

- (8) Reports of staff consultations, stress risk assessments, and health and safety related matters;
- (9) Any other matters the board wishes to examine and any matter the Headteacher wishes to bring to the board's attention;
- (10) A section of the report will be provided so that trade union or staff reps can make direct feedback to the board. They will provide the text themselves.
- (11) Details of any visits or inspections by, and/or actual or threatened enforcement action by regulatory bodies including those responsible for health and safety, fire safety and food safety.
- (12) Details of any major health and safety incident, related complaints and sanctions taken against employees and / or pupils for health and safety breaches;
- (13) Report on lessons learned in response to the above to ensure that appropriate corrective action is being taken and that learning is shared across the Trust;
- (14) Report on any health and safety trends or patterns identified as a result of ongoing monitoring and review of health and safety matters across the Trust and the Schools.

5.3.3 The school will review its measures to meet satisfactory Health and Safety standards and ensure that these align with CST's overarching Health and Safety policy.

5.4 Accidents and reporting

- 5.4.1 There is a requirement to report incidents that occur at work under the Reporting of Injuries, Disease, Dangerous Occurrences Regulations.
- 5.4.2 These are the most serious incidents and must be reported by the Trust. For schools there is clear and simple guidance produced by HSE in <https://www.hse.gov.uk/pubns/edis1.pdf>. Incidents should be reported by staff to the Site Manager or in their absence the Headteacher, Operations Manager or Lead First Aider and a decision made as to whether a RIDDOR report is required.
- 5.4.3 Where a reportable incident occurs during school activities (or at the Trust offices) the Trust Estates Manager and or their Advisors (Delegated Services) will be notified as soon as possible. They will then make further investigations and take action including reporting to the Health and Safety Executive.
- 5.4.4 All accidents that need first aid need to be recorded in the accident book or online using Medical Tracker.

5.5 Administration of medicines and support for pupils and other people with medical conditions

- 5.5.1 Arrangements for the administration of medication in the School will be in accordance with the 'Policy for the Administration of Medicines'.
- 5.5.2 This procedure will be brought to the attention of all employees, volunteers and parents. The aim is to ensure that the school knows of any medical conditions requiring either day to day medication or emergency medication. Parents /carers know they will be informed of medication administered and any additional

information which will help in the longer term management of the medical condition.

5.6 Alcohol, Drugs and Substance Misuse

- 5.6.1 To ensure that drugs, alcohol and substance misuse is managed in the school and that the policy is clearly understood throughout the school and with parents and pupils, the school will:
- Communicate the strategy on alcohol, drugs and substance misuse to pupils, staff and parents. None should be brought onto school premises and there will be serious consequences if any is found.
 - Train managers to identify staff, visitors and pupils they suspect to be misusing alcohol, drugs etc.
 - Develop a system for dealing with drug, substance and alcohol issues
 - Provide adequate training, instruction and training on alcohol, substances and substance misuse
 - Make the drug, alcohol and substance misuse policy for students available on the school website and widely known amongst the parents and pupils.
 - Make sure staff are aware of the smoking, alcohol and drugs policy for staff, contained within the CST employment manual.
 - Deliver appropriate training to staff, parents and pupils on drugs, alcohol and substance misuse
 - Ensure detailed investigation are carried out of any cases involving alcohol, drugs and substances
 - Periodically assess accidents, incidents and check that alcohol, drugs or misuse was not a contributing factor.

5.7 Asbestos

- 5.7.1 Bristol Cathedral Choir School has an up to date asbestos register based on a Management Survey. The register will be checked before any work is carried out and where necessary a more intrusive Refurbishment or Demolition Survey will be carried out. In addition the school will have an asbestos management plan, emergency procedures and a regular recorded inspection regime.
- 5.7.2 Teachers and school staff will be briefed within their induction if their work place contains asbestos that they can disturb and the immediate reporting to the Site Manager if they suspect disturbance has occurred.
- 5.7.3 Contractors who may disturb asbestos in their work must have a valid asbestos awareness training certificate before starting work. This will be checked at the induction. They will be briefed on the induction regarding the emergency procedure if they were to disturb any asbestos.
- 5.7.4 Work with asbestos will only be done by trained and insured contractors. The Trust would normally use HSE Licensed Contractors. Where trades like roofers are working with non-licensed material then as long as they have EL and PL insurance and training for working with asbestos and provide and follow their risk assessments and method statement then this will be allowed.

5.8 Buildings and Premises

5.8.1 The management of the school's premises will be assisted by the keeping and use of documentation. This will enable planned maintenance, asset protection, audits and provide references for future work.

5.8.2 The school should take all reasonable steps to ensure that the premises are maintained in such a way (to include ensuring that all traffic routes are of suitable construction, free from defects and obstructions and are adequately lit) to reduce the risk of slips and trips to employees, pupils and other users of Academy's premises and that it complies with its obligations under the Workplace (Health, Safety and Welfare) Regulations 1992.

5.8.3 Key documents (paper or electronic) will include:

- A premises log book (iAM Compliant);
- Records of maintenance, inspections and repairs;
- Defect reporting procedure;
- Fire, asbestos, Legionella, and other key matters as required;
- Insurance inspections;
- Defect report;
- Other documents as needed.

5.9 Communicating information to employees and other persons who are not employees.

5.9.1 There will be staff notice boards, staff meetings, school and staff newsletters and email briefings as well as the health and safety meetings. These will be supplemented as necessary by special meetings or focus groups. Parents and carers will also be on a text service.

5.9.2 Contractors will get briefings appropriate to their work or project. This will include a site induction.

5.9.3 Perimeter and site posters and signs or other markings will be used as suitable for example to warn that the site is not generally open to the public.

5.10 Computers and other IT equipment and systems

5.10.1 Equipment related to information, technology and communications will be managed by the Trust's IT department.

5.10.2 Display screen assessments when required will be organised through the Site Manager/Delegated Services

5.10.3 E-Safety is managed by the DSL and teaching of E-Safety is planned and monitored by the computing lead.

5.10.4 Data protection requirements are dealt with by the Trust.

5.10.5 All IT facilities are subject to the relevant safety risk assessments.

5.11 Confined spaces

5.11.1 Risk assessments will be carried out in relation to any confined spaces within the school site e.g. where there is restricted access and ability for movement. Staff and contractors will be made aware of the relevant risk assessment before accessing a confined space.

5.12 Contractors

5.12.1 All contractors entering or working on school premises will do so only with the permission and authorisation of the Headteacher or Site Manager.

5.12.2 Any work that might disrupt teaching and learning will be arranged to minimise this as far as possible.

5.12.3 Health and safety documentation including references, risk assessments, method statements, and safe systems of work, appropriate to the working circumstances will be examined by the Site Manager when contractors are considered.

5.12.4 The Site Manager/School Estates Team will have overall responsibility for liaising with contractors. They will ensure safe working arrangements by:

- Providing a copy of the school's policies, procedures, codes of practice and other guidelines;
- Providing a copy of the school's management asbestos survey;
- Other documents as needed;
- Checking contractor's risk assessment and other details as necessary.

5.13 COSHH (Control of substances hazardous to health)

5.13.1 For the purposes of this policy the governors recognise the everyday understanding that all chemicals should be considered here and any other similar things. In law certain items such as lead and asbestos have their own regulations so they are also mentioned separately.

5.13.2 Other COSHH related matters will be considered by the Site Manager.

5.13.3 The legislation involved includes:

- Control of Asbestos Regulations
- Control of Lead at Work Regulations
- Control of Substances Hazardous to Health Regulation The Dangerous Substances and Explosive Atmospheres Regulations

- Explosive Regulations
- Ionising Radiation Regulations
- Petroleum (Consolidation) Regulations

5.14 Defect reports

- 5.14.1 There is a defect reporting procedure so that problems can be dealt with quickly and effectively.
- 5.14.2 All employees are expected to report all problems, defects and hazards to their line manager or the Site Manager as soon as they become apparent. .

5.15 Design and Technology

- 5.15.1 The school recognises that school craft, design and technology activities are potentially hazardous and as such are following where necessary guidance in woodworking, drilling machines, approved code of practice for provision and use of work equipment, approved code of practice for personal protective equipment, electricity at work regulations, safety in practical department and CLEAPSS.
- 5.15.2 Because of the nature and complexity of Design and Technology the school has its own Design and technology safety policy adopted from CLEAPSS and the CLEAPSS model risk assessments have been adopted, please see D&T health and safety policy. This policy is held in DT.
- 5.15.3 To support the guidance given in the publications, school art, design and technology activities will be subject to risk assessment procedure. Any activities assessed as presenting a significant risk to safety, which cannot be fully eliminated by substitution, will have safe systems of work produced to control the residual hazards. These safe systems of work will be based on established safe point of use texts and will be produced by the art, design and technology Department. The safe systems can be used for staff training, for lesson plans and pupil worksheets.
- 5.15.4 Any chemical used in the school art, design and technology department will either be covered by the CLEAPSS central COSHH assessments and hazard system or will be subject to the general school COSHH assessment procedure contained in this document. Safety data sheets and hazards for all chemicals will be held in the art, design and technology departments.
- 5.15.5 This policy will be reviewed regularly and updated each year as necessary.

5.16 Display Screen Equipment (DSE) and workplace risk assessment

- 5.16.1 The Health and Safety [Display Screen Equipment] Regulations require that regular users of all types of display screen equipment are risk assessed and steps are taken as needed to protect their health in safety.
- 5.16.2 The school will arrange risk assessments as necessary. All employees and anyone else on school business such as volunteers can ask for a risk assessment regarding

their workplace and the use of DSE. This is currently carried out by the relevant member of staff.

5.17 Driving at Work

5.17.1 The school has two minibuses that are on a lease contract. The contract provides safe, maintained road worthy vehicles.

- All drivers of the minibuses need to undergo regular health examinations by a GP before driving the minibus, then a year later and thereafter 5 yearly. It may be considered after a period of prolonged illness or following an accident.
- The School is to provide employees with adequate information, instruction and training. Ensure children wear seat belts.
- The School must ensure all vehicles are covered by business use insurance.
- All the minibuses must carry a first aid kit and a serviced fire extinguisher.
- The school must ensure that staff report medical conditions that might affect their driving and that appropriate health checks are carried out.
- The School Operations Manager must periodically check drivers licences.
- The School must review any driving related accidents.
- Drivers must ensure that the minibus checklist has been completed for every journey.

5.17.2 The school site is bisected by a public road, which is supervised by a caretaker throughout the school day. There is limited parking available and this is allocated to staff. visitors are required to report to reception.

5.17.3 When vehicles are moving around the site during school hours they will be escorted by a member of the site team in high vis jackets/bibs at all times vehicles will not move when groups of children are moving. The vehicle will stop under instruction from the member of the site team

5.18 Electric vehicles

5.18.1 Electric cars and bikes are to be parked at least 6m away from the school buildings. No charging of electric vehicles is currently permitted on school premises.

5.19 Emergency procedures

5.19.1 The school has its own Emergency procedures for matters such as fire, flood and utility failure. The Trust will provide support in terms of advice, authorisation for expenditure and the use of contractors or advisors above an agreed limit delegated to the school's Headteacher and Site Manager

5.19.2 Further information on these procedures is contained within the Business Continuity Policy. The Trust will provide support in terms of advice, authorisation for expenditure and the use of contractors or advisors above an agreed limit delegated to the school's Headteacher and Site Manager

- 5.19.2 Weather problems will be dealt with in a similar way in that local decisions will be made about remaining open in bad weather. The assessment process will be based on Trust guidance and agreed with school leaders. The Trust may however, opt for a decision overall where weather forecasting indicates this is prudent.
- 5.19.3 Threats to people will be managed with local security and lockdown procedures.

5.20 Fire precautions

- 5.20.1 The arrangements for general fire safety as required under the Regulatory Reform [Fire Safety] Order will be in accordance with the outcome of a fire risk assessment and reviewed annually unless requiring revision due to substantial change.
- 5.20.2 The school's fire log book will be used to record weekly system tests, practise and unplanned evacuation drills, training on equipment, visit by the Fire and Rescue service, emergency crate inspections, etc.
- 5.20.3 The school's fire log book will hold the repair, maintenance, and servicing records for smoke detectors, fire alarms, extinguishing equipment, emergency lighting, etc.

5.21 First Aid Provision and Medical Support

- 5.21.1 The arrangements for first aid in the school will be in accordance with the policy as laid down in the 'first aid and administration of medicine policy'. First aid boxes will be located at designated points throughout the school including reception and faculty departments and may only normally be opened by qualified First Aiders.
- 5.21.2 The names and photographs of the first aiders and others with appropriate skills must be posted on the school's health and safety notice board and in strategic locations within the school.

5.22 Food safety and food hygiene

- 5.22.1 Bristol Cathedral Choir School will be registered as a food business.
- 5.22.2 The School or their contractors are expected to achieve a maximum score (5 stars) on formal Environmental Health food safety and hygiene inspections. The trust will support any school that has a problem doing this.

5.23 Health

- 5.23.1 Health is identified as any public health issue such as mumps, norovirus and Coronavirus (Covid 19) etc.
- 5.23.2 For any Health issue Government guidance including UKHSA, NHS and any Local Health Expertise will be followed.

5.23.3 Specific risk assessments have been undertaken and actions implemented where required. The risk assessments are reviewed regularly against Government Guidelines.

5.23.4 The school should work through Government guidance and take the following steps to address their risks, considering for each risk whether there are measures in each step they can adopt before moving onto the next step:

- Elimination: stop an activity that is not considered essential if there are risks attached.
- Substitution: replace the activity with another that reduces the risk. Care is required to avoid introducing new hazards due to the substitution.
- Engineering controls: design measures that help control or mitigate risk.
- Administrative controls: identify and implement the procedures to improve safety (for example, markings on the floor, signage).
- Having gone through this process, personal protective equipment (PPE) should be used in line with UK Health Security Agency guidance.

5.24 Home Visits

5.24.1 To ensure the safety of pupils and staff, the school will:

- Ensure a specific risk assessment is undertaken.
- For a first time visit/contact, always ensure two people are present
- The parent/carer is present at all times during the visit. The visit should never be in the pupils bedroom or bathroom
- Whenever possible take two people to the visit
- Under special circumstances, if you are confident that one person can visit (e.g. repeat visits) the following steps should occur:
- Your manager must know the time of the appointment (allow time to get there safely) and the time the appointment is likely to end. Where you are. Your estimated time back to school
- You must ask a receptionist or your manager (if out of hours) to call you during the visit, to check you are safe and in no imminent danger (giving the receptionist or manager a code word you can use if you feel you are in danger. It will enable the receptionist/manager to make a 999 call without alerting the person causing the alarm)
- You must call the receptionist /manager once you are out of the house and the appointment is finished.
- If you have to transport the pupil back to school, this should always be done via public transport, if you are by yourself. Never take the pupil back to school in your own car, if alone.
- Any concerns during the visit must be discussed with your manager, before any further visits. If necessary, review the risk assessment.
- Report any near misses or incidents

5.25 Housekeeping

- 5.25.1 The Site Manager, caretakers and others will ensure adequate arrangements are in place to keep the school clean and tidy through good housekeeping. In particular, rubbish and other combustible materials will not be allowed to accumulate. Boiler Rooms and all designated escape routes will be kept clear at all times. Rubbish bins, skips, etc. will be located away from school buildings and secured to suitable fixed points.
- 5.25.2 Lead staff will make regular checks of their areas, maintaining tidiness, arranging adequate storage and ensuring appropriate cleaning arrangements.

5.26 Inspections

- 5.26.1 The board and senior staff will accompany the school headteacher and Site Manager on inspections to set an example and demonstrate commitment to health, safety and wellbeing (as well as safeguarding and security). The arrangements for doing this occasionally will be made by the Trust Estates Manager.
- 5.26.2 Other inspections, audit and surveys will be run by the school with guidance and support from the Trust Estates Manager.

5.27 Lettings

- 5.27.1 The school may decide to have lettings. The school will ensure that any lettings are delivered in accordance with the CST lettings policy and that letting terms are explicit regarding the respective roles and responsibilities of both the school and the hirer for health and safety matters including: insurance arrangements, risk assessments, first aid, fire safety procedures and emergencies.
- 5.27.2 All high risk areas of the school premises, including the halls and other rooms or grounds must be given instructions regarding all relevant procedures operating in the school. All emergency exits must be unlocked, and a telephone must be available for emergency calls. The premises or grounds must be inspected and secured after use.

5.28 Local Exhaust Ventilation and air extraction

- 5.28.1 The governors recognise there will be occasions when it will be necessary to refer to outside specialists for air monitoring and the checking of ventilation systems installed for the removal of kitchen fumes, any dusts, vapours, gases etc and for the Control of Substances Hazardous to Health. Provision will be made to ensure this takes place at least every 14 months (from schedule 4, COSHH). A record of all such tests will be kept in the premise's logbook.
- 5.28.2 Cooker hoods and other catering ventilation will be installed to ensure adequate removal of waste gases from cooking equipment and to maintain a suitable temperature and humidity for the staff members.

5.28.3 Other air extraction will be provided and maintained as needed around the premises e.g. toilets and washrooms, rooms where there are photocopiers or other equipment, rooms that may become hot during parts of the year.

5.29 Lone Working

5.29.1 The precautions to be taken in relation to lone working will be in accordance with the lone working section of the CST security policy.

5.30 Manual handling (ie. Lifting and carrying of objects) and the lifting and carrying of children as part of care arrangements.

5.30.1 Responsibility for organising the safe manual handling of significant loads will rest with the Site Manager. The caretaker will assist with handling where required, for example teachers where loads need to be carried.

5.30.2 The lifting and carrying of children as part of care arrangements will be managed by the SENDCo, First Aiders and the Site Manager

5.30.3 All lifting and carrying of objects or people will only be permitted after suitable risk assessment has been undertaken by a competent person and all the precautions and control measures identified are in place.

5.30.4 Where possible standard operating procedures will be used as part of premises management or care plans.

5.30.5 Equipment such as hoists, trolleys, wheelchairs will be inspected and maintained in line with the Provision and Use of Work Equipment Regulations

5.30.6 The SENDCo will ensure safe and considerate manual handling of pupils to eliminate or if this is not possible minimised risks. In addition to a suitable and sufficient risk assessment, it will be identified if there is another way to undertake the task so that greater consideration of the person's personal wishes and right to dignity are respected.

5.30.7 Appropriate equipment will be purchased and specialist training provided if needed; Review and amendment of local policies will take place as necessary and all manual handling accidents and near misses will be investigated.

5.31 Off-site visits, educational trips and sports events

5.31.1 Arrangements for all off site visits such as field trips and extracurricular activities will comply with the procedures and code of practice for off site visits and the school's Educational Visits policy

5.31.2 All off-site visits, educational trips and sports events will have a named Trip Lead in line with the school's Educational Visits policy.

5.31.2 The school will:

- Complete detailed risk assessments for each trip/visit, agree and signed. Risk assessments taken on the trip, along with medical information, special educational needs and pupil contact lists.
- Train key staff in the risk assessments and what to do in an emergency.
- Provide all necessary instruction, training, information and supervision to ensure the safety of pupils and staff.
- Investigate all incidents, near misses and accidents, to prevent similar accidents occurring again. Periodically assess accident records to identify any trends. Review the generic and specific trip risk assessments, as and when necessary.

5.32 Other issues

5.32.1 There are a wide range of support organisations providing help and advice and the Trust will make full use of these. Each school will be encouraged to use them well.

5.32.2 The Health and Safety Executive website provides free downloads of most of its publications and these set best practice for occupational health and safety. Other relevant organisations such as CLEAPSS and DATA which are membership based will be joined by the Trust.

5.32.3 Where feasible in-house staff will gain skills, knowledge and experience to carry out most health, safety and wellbeing functions. If necessary external contractors and advisors will be used.

5.33 Outdoor structures, seating, monuments and other miscellaneous features

5.33.1 This item covers the wide range of external features from fences to gazebos and roof gardens. The principle is of regular inspection and maintenance. Specific risk assessment may be necessary for some things although some items commonly in use such as benches have 'everyday risks' and are unlikely to need detailed risk assessments.

5.33.2 Control measures include day to day walking the site, picking up issues before they become a problem.

5.34 Plant, machinery, and equipment

5.34.1 The provision and use of plant, machinery and equipment in the school will be in accordance with the procedures for maintenance of installations, plant and equipment.

5.34.2 The governors recognise that specialist advice is required to determine the safety requirements for the following:-

- Adequate and correct guarding of machinery
- Run down and emergency stopping of machinery
- General inspection of plant, equipment and machinery

- Storage and transportation of toxic substances, gases etc and
 - Disposal of toxic and other waste substances and materials.
- 5.34.3 Specialist advice will be obtained as necessary by hiring contractors and advisers as needed.
- 5.34.4 The Site Manager or relevant technicians will be responsible for ensuring that periodic checks are carried out of plant, machinery, and equipment within their area of activity. Maintenance and inspection reports will be kept with or near the equipment to which they relate and copies kept in the premises logbook.
- 5.34.5 A thorough inspection of work areas will take place at least three times a year in the presence of the safety representative and other designated person (s) as decided by the school's safety team.
- 5.34.6 New plant, machinery, equipment, common materials and substances will be brought onto the premises after discussion at the school's health and safety meetings as part of consultation with staff.
- 5.34.7 Lead staff will be responsible for undertaking risk assessments and producing safe systems of work for cleaning and maintaining plant, machinery and equipment.
- 5.34.8 Lead staff will be responsible for selecting and providing the correct type of personal protective clothing and equipment (PPE) according to the needs of individual members of staff.

5.35 Playing fields

- 5.35.1 An inspection of the playing fields will be included as part of the seasonal three times a year inspection programme. This will be to look for physical defects to the grounds which may increase the likelihood of slips, trips, and falls, as well as checking that fields are free from broken glass and other sharps. Responsibility for the inspection will rest with the lead staff for sport and PE and will include goal posts, goal posts / marker flag location etc.
- 5.35.2 A visual inspection of playing fields will also be carried out before all organised games and contact sports and all debris will be removed. This duty is delegated to the member of staff leading the activity. This also applies to away sporting fixtures as far as is reasonably practical.

5.36 Portable Appliance testing (PAT)

- 5.36.1 Although most equipment of concern here is electrical it also applies to other equipment that may need testing.
- 5.36.2 The health and safety executive guidance and the manufacturer's instructions will be the basis for frequency and type of testing.

5.37 Portable Equipment

- 5.37.1 Portable equipment can be moved around and used by various people. It ranges from small stationary equipment usually regarded as low risk to grass cutting equipment, electrical equipment and other potentially high risk items.
- 5.37.2 The procedure to be adopted is as mainly specified in the 'policy and procedure for the maintenance of installations, plant and equipment '. Inspection reports will be kept in the premises log book. Timely inspection appropriate to the type and use of the equipment will be carried out, to maximise efficiency, minimise costs and ensure bought in items by staff are proactively dealt with and items such as portable device Transformers are not on when not in use.
- 5.37.3 Suitable training will be given where required.

5.38 RAAC

- 5.38.1 Surveys have been carried out for RAAC across all CST schools and have not provided evidence of any RAAC. Any major projects or building works required across our schools will continue to consider RAAC going forward.

5.39 Radon

- 5.37.3 All schools will carry out a radon survey and if in a radon affected area, will include radon measurements within their risk assessment and management processes.

5.40 Risk Management (Risk Register)

- 5.40.1 The school uses a Risk Register to identify and manage risks within the Health and Safety Management System.
- 5.40.2 Where deemed required more detailed risk assessments will be undertaken.
- 5.40.3 Risk assessments to control the hazards and the risk of harm through School activities will be managed by the school with support from the Trust.
- 5.40.4 Risk assessment is about being risk aware rather than risk averse. Foreseeable risks must be controlled and the relevant best (or good practice) procedures followed. Challenging and interesting lessons and trips for example are most certainly not banned but must be carefully risk assessed and then if acceptable can be carried out.

5.41 Science and Radiation

- 5.41.1 The school recognises that school science activities are potentially hazardous and acknowledge the guidance detailed in Science publications, such as CLEAPSS. To support the guidance given in the publications, school science activities will be subject to risk assessment procedure. Any activities assessed as presenting a significant risk to safety, which cannot be fully eliminated by substitution, will have safe systems of work produced to control the residual hazards. These safe systems of work will be based on established safe point of use texts and will be produced by

the Science Department. The safe systems can be used for staff training, for lesson plans and pupil worksheets.

5.41.2 Any chemical and microorganisms used in the school science department will either be covered by the CLEAPSS central COSHH assessments and hazcard system or will be subject to the general school COSHH assessment procedure contained in this document. Where available, safety data sheets and hazcards for all chemicals will be held in the school science department.

5.41.3 Given the nature and complexity of Science, it has its own health and safety policy, which is held in the Science Department and included here. It contains arrangements for all activities. One of those activities is radioactive materials. Radiation is covered by the Science Safety Policy; training, competence, storage, handling; security of the radioactive materials and radiation protection.

5.42 Training

5.42.1 The Management of Health and Safety at Work Regulations require that the school provides suitable information and training regarding risk assessment and health and safety management.

5.42.2 The Governors and headteacher recognise that training is always a constant requirement,

5.42.3 New employees, transferred staff and supply staff will require either a level of awareness relevant to their task or a more in depth training programme, taking into account new technology, legislation, regulations and standards to determine a fresh approach to training requirements and a retraining programme for existing staff.

5.42.4 There are various categories of training requirements defined as induction training, informative awareness training and specific hands on training.

5.42.5 Induction Training

5.42.6 This will apply to new employees, employees transferred within the school to other activities, contract and agency staff, and volunteer helpers, all of whom will need to be shown over the school and host area, and be issued with any instructions, key information on policies and procedures, fire precautions, first aid and welfare arrangements etc. Health and Safety Induction will be undertaken by relevant staff with a site pack available to cover areas including ad hoc visits and new staff.

5.42.7 Informative and awareness training

5.42.8 A more in depth approach, in house, showing employees what they must and must not do; providing supervision until they gain an understanding of what is required; making them aware of their tasks and providing written procedures and arrangements.

5.42.9 Specific training

5.42.10 This is a hands-on training approach where governors recognise that employees will require an accepted level of competence to perform their tasks.

5.42.11 Curriculum subjects may require particular competences and support staff such as caretakers may require others. Examples are:-

- sports and PE
- design and technology (wood/ metal work, cooking, sewing etc.)
- first aid
- administering medicines and supporting pupils with medical needs
- safeguarding roles
- fire safety duties

5.43 Transport

5.43.1 The school has two minibuses that are on a lease contract. The contract provides safe, maintained road worthy vehicles. All activity in relation to the minibuses will be undertaken in accordance with the minibus usage policy including the following:

- All drivers should have an annual eye test and fit note supplied via a GP to confirm that there have been no relevant changes in their health. The school must ensure that staff report medical conditions that might affect their driving and that appropriate health checks are carried out. Where there are concerns, a health check should be undertaken e.g. after a period of prolonged illness or following an accident.
- The school is to provide employees with adequate information, instruction and training. Ensure children wear seatbelts.
- The school must ensure all vehicles are covered by business use insurance.
- All the minibuses must carry a first aid kit and a serviced fire extinguisher.
- The Site Manager must annually undertake driving licence checks.
- The school must review and driving related incidents/accidents
- Drivers must ensure that the minibus checklist has been completed prior to every journey.
- The school stores the minibuses behind locked gates.
- When vehicles are moving around the site during school hours, they will be escorted by a member of relevant staff in Hi-Vis jackets/bibs at all times. Vehicles will not move when groups of children are moving. The vehicle will stop under instruction from the member of the site team.

5.43.2 If staff use their own cars for transporting students, the school should have on file the following:

- Copy of driving licence.
- Proof of car insurance which includes business use.
- Letter from doctor to confirm 'fit to drive'
- If the child is under 135cm, then a booster seat is required or the risk of a £60 fine and three points on licence if caught. The seat the child can use depends on their weight so please visit the gov.uk website for further information on weights and seat requirements.

5.44 Water hygiene including controlling the risk of Legionellosis

5.44.1 The Trust Estates Manager will be the overall duty-holder and the Headteacher will be duty holder for their school. All schools must have a water system survey and Legionella Management Plan in place and regularly review.

5.45 Wellbeing (including the management of pressure and stress)

5.45.1 The Trust will monitor and manage the workforce and provide support and guidance to the schools.

5.45.2 Occupational Health, counselling and other HR and health resources will be organised by the Trust and provided to the schools.

5.45.3 The school will address the issues at local level where appropriate.

5.46 Young Persons/ Work experience

5.46.1 The health safety and welfare of young persons employed by the school and pupils sent for work experience so far as is reasonably practicable and to comply with all the relevant legislation

5.46.2 The school will:

- Ensure that the work experience member of staff is sufficiently trained and has sufficient resources to do the job effectively.
- Screen the work experience placements and decide on businesses that are appropriate.
- Complete a written young person risk assessment with activities set out that are prohibited that are considered too high a risk.
- Complete a written work experience risk assessment with activities set out that are prohibited that are considered too high a risk.
- Develop safe systems of work for young persons and work experience pupils.
- Provide the pupil, parent and young person with a copy of the risk assessment and provide sufficient information, training and instruction.
- Monitor and review their work to ensure it is performed safely.

6 References:

6.1 DfE: Multi-Academy Trusts (MAT): Good practice guidance and expectations for growth:-

“Risk management”

Academy trusts are accountable for educational outcomes, financial management, safeguarding (including health and safety) and estate management in their trusts. The boards of trustees are responsible for risk management –particularly setting the parameters of the process and reviewing and considering the result. Effective risk management underpins effective planning elsewhere like strategic finance. While

they may choose to delegate the day-to-day management of some risk to staff or professional advisers, the trust's involvement should be such that within the trustees' annual report they can make the required risk management statement with confidence.

6.2 The following is an extract from the full document produced by the DfE and available from their website:-

10 ways effective MATS manage risk

MATs are organisations responsible for running multiple schools. As such it is imperative that they give due concern to managing risk at both school and organisation level. When asked, MATs described the following elements at key:-

1. Risks – and the impact if they materialise – are identified in a central register. They are monitored and mitigated effectively at both school and trust level, often by an audit committee.
2. The MAT learns the effective risk management processes from the other sectors.
3. It is clear which risks should be managed locally, and which are escalated to, or held by, the central MAT.
4. Each risk is owned by a named person, so that no risk or issue 'falls between a gap'. Those accountable have the ability to act decisively to manage risks when needed.
5. The trust is clear how risk management will need to develop and evolve as the trust grows in size.
6. Effective due diligence takes place before the MAT agrees to a school joining the trust. This means the trust fully understands all the risk, assets, and liabilities they would take on, and either put appropriate plans in place, or decide that it is not appropriate for the school to join the trust at that time.
7. Any due diligence is carried out by a person or persons with sufficient skills and experience. Specialists can be employed or contracted if those skills do not already exist within the trust.
8. A specific board member is responsible for managing their estates. In smaller trusts this could be the Chief Executive or Chief Operating Officer in small trusts, while larger MATs may set aside a dedicated board position, such as a Director of Estates.
9. Legal requirements relating to the estate, including requirements relating to health and safety, and specific potential threats such as legionella, asbestos and fire are well understood. (See DfE guidance for those responsible for the operation and maintenance of school buildings.)
10. Comprehensive knowledge of buildings and their condition enables the MAT to plan and prioritise maintenance and construction work. For MATs with at least five academies and 3000 pupils, they will receive a school condition allocation whereas

smaller trusts will need to bid for funding through the Condition Improvement Fund.

7 Check List

| No. | Item | Operational responsibility: Trust | Operational responsibility: School |
|-----|--------------------------------------------------------------------------------------|-----------------------------------|------------------------------------|
| 1 | Accident and Incident reporting | Yes | Yes |
| 2 | Administration of medicines | No | Yes |
| 3 | Annual report on health, safety and wellbeing | Yes | Yes |
| 4 | Asbestos | Yes | Yes |
| 5 | Audit | Yes | No |
| 6 | Buildings and premises | Yes | Yes |
| 7 | Business Continuity and Critical Incidents (snow, fire, flood, pestilence etc) | Yes | Yes |
| 8 | Estates and premises management | No | Yes |
| 9 | Communication with employee about health, safety and wellbeing | Yes | Yes |
| 10 | Contractors | Yes | Yes |
| 11 | Control of substances hazardous to health(COSH) such as chemicals, dust and microbes | Yes | Yes |
| 12 | Coronavirus (Covid 19) | Yes | Yes |
| 13 | Defect reports | No | Yes |
| 14 | Display screen equipment | No | Yes |

| | | | |
|----|------------------------------------------------------------------------------------------------|-----|-----|
| 15 | Electricity | Yes | Yes |
| 16 | Excessive temperatures | Yes | Yes |
| 17 | Extended activities outside core hours/ lone working | No | Yes |
| 18 | Fire precautions | Yes | Yes |
| 19 | First aid provision and medical support | No | Yes |
| 20 | Food Safety and Hygiene (this is not covered under the Health and Safety at Work etc Act 1974 | No | Yes |
| 21 | Higher risk curriculum areas | Yes | Yes |
| 22 | Housekeeping (clear corridors, storage, trip hazards etc) | No | Yes |
| 23 | Site defects of significance | No | Yes |
| 24 | Inspections | Yes | Yes |
| 25 | Lettings | No | Yes |
| 26 | Local exhaust ventilation/Air extraction | No | Yes |
| 27 | Managing Contractors | Yes | Yes |
| 28 | Manual handling-loads | Yes | Yes |
| 29 | Manual handling-carrying children and people | Yes | Yes |
| 30 | Manual handling-physical intervention/positive handling /restraint | Yes | Yes |

| | | | |
|----|----------------------------------------------------------------------------------------------------------|-----|-----|
| 31 | Monitoring and auditing | Yes | Yes |
| 32 | Noise and vibration | Yes | Yes |
| 33 | Off-site trips, educational visits, sports events | Yes | Yes |
| 34 | Outdoor structures, play equipment etc | Yes | Yes |
| 35 | Plant, machinery and equipment | No | Yes |
| 36 | Playing fields, pavilions and other open space, sports equipment, sports centres or similar | No | Yes |
| 37 | Playground equipment | No | Yes |
| 38 | Portable equipment testing (often electrical but could be air or hydraulic or manual) | No | Yes |
| 39 | Pregnancy/ maternity | Yes | Yes |
| 40 | Radiation (ionising and non-ionising) | Yes | Yes |
| 41 | RIDDOR –Reporting of injuries, diseases and dangerous occurrences | Yes | Yes |
| 42 | Risk Assessment | Yes | Yes |
| 43 | Safety reps, staff reps, involving staff; consultation on health safety and wellbeing. | Yes | Yes |
| 44 | Safety reps, staff reps, involving staff; consultation on health, safety and well-being safety committee | No | Yes |
| 45 | Security | Yes | Yes |
| 46 | Security/ Bomb threat | No | Yes |
| 47 | Site defects of significance | No | Yes |

| | | | |
|----|------------------------------------------------------------------------|-----|-----|
| 48 | Stress in the workplace | Yes | Yes |
| 49 | Training | Yes | yes |
| 50 | Transport –fleet vehicles, hire vehicles, public and private transport | Yes | Yes |
| 51 | Unacceptable behaviour-pupils and staff | Yes | Yes |
| 52 | Unacceptable behaviour – parents and public | Yes | Yes |
| 53 | Utility services (eg water) | No | Yes |
| 54 | Waste disposal | Yes | Yes |
| 55 | Water hygiene and Legionella, Lead in water | Yes | Yes |
| 56 | Wellbeing including pressure and stress | Yes | Yes |
| 57 | Working at Height | No | Yes |
| 58 | Work experience/student placements, new teachers and other new joiners | No | Yes |

This checklist is a guide only, other items may need to be considered.

8 Version control

| Version | Date | Amended by | Recipients | Purpose |
|---------|------|------------|------------|---------|
| 1 | | | | |

9 Approvals

| Version | Date | Approved by |
|---------|------|-------------|
| | | |

| | | |
|----------------------|----------|--|
| Date policy adopted | May 2024 | |
| Date for next review | May 2025 | |